

**Berme Road Park Trailhead Enhancements
Summary and Expenditure Plan**

Per Schedule A of our contract with the Ulster County Economic Development Alliance for Ellenville Million funding, below is a plan and summary of funding sources and uses for our enhancements to the Berme Road Park Trailhead.

Funding Summary

Sources \ Uses	<i>Kiosk - labor</i>	<i>Kiosk – materials</i>	<i>Kiosk – signage</i>	<i>Access road and parking</i>	Total by Source
<i>Ellenville Million Grant</i>	\$0	\$8,020.53	\$4,200.00	\$47,347.47	\$59,568.00
<i>Village (In-Kind Labor*)</i>	\$3,800.00			\$5,000.00	\$8,800.00
Total by Use	\$3,800.00	\$8,020.53	\$4,200.00	\$52,347.47	<u>\$68,368.00</u>

Expected Outcomes

- a. *Build a new trailhead kiosk*
Build masonry footings and six-sided trail kiosk with roof near entrance to Smiley Carriage Road. Design to match existing kiosk in Lippman Park.

- b. *Re-pave and stripe access road and parking lot*
Strip existing damaged blacktop and dispose of material. Grade subsurface and install crushed stone subbase. Furnish and install truing and leveling asphalt followed by 1.5" Superpave Top asphalt with wing gutter on one side for access road (approx. 490' x 22'). Furnish and install 2" crushed stone subbase for grading followed by 2.5" 19mm binder and asphalt and 1.5" 12.5 mm Top asphalt, including wing gutter around approximately half of the parking area (140' x 108'). Stripe parking areas.

- c. *Fabricate and install signage at new trailhead kiosk*
Utilizing existing signage designs, fabricate large format trail map and other informational signage and install at newly erected trailhead kiosk.

Expected Timeline for Completion

January 2017	Contract executed
March 2017	Insurance documents and summary and expenditure plan
April 2017	Begin site prep for access road and parking
May 2017	Paving and striping, grading and excavation for kiosk, install kiosk footings

June 2017	Paving completed, block and masonry work on footings/foundation for kiosk
July 2017	Construction of kiosk frame and roof
August 2017	Construction of kiosk frame and roof
September 2017	Kiosk completed
October 2017	Project closeout report

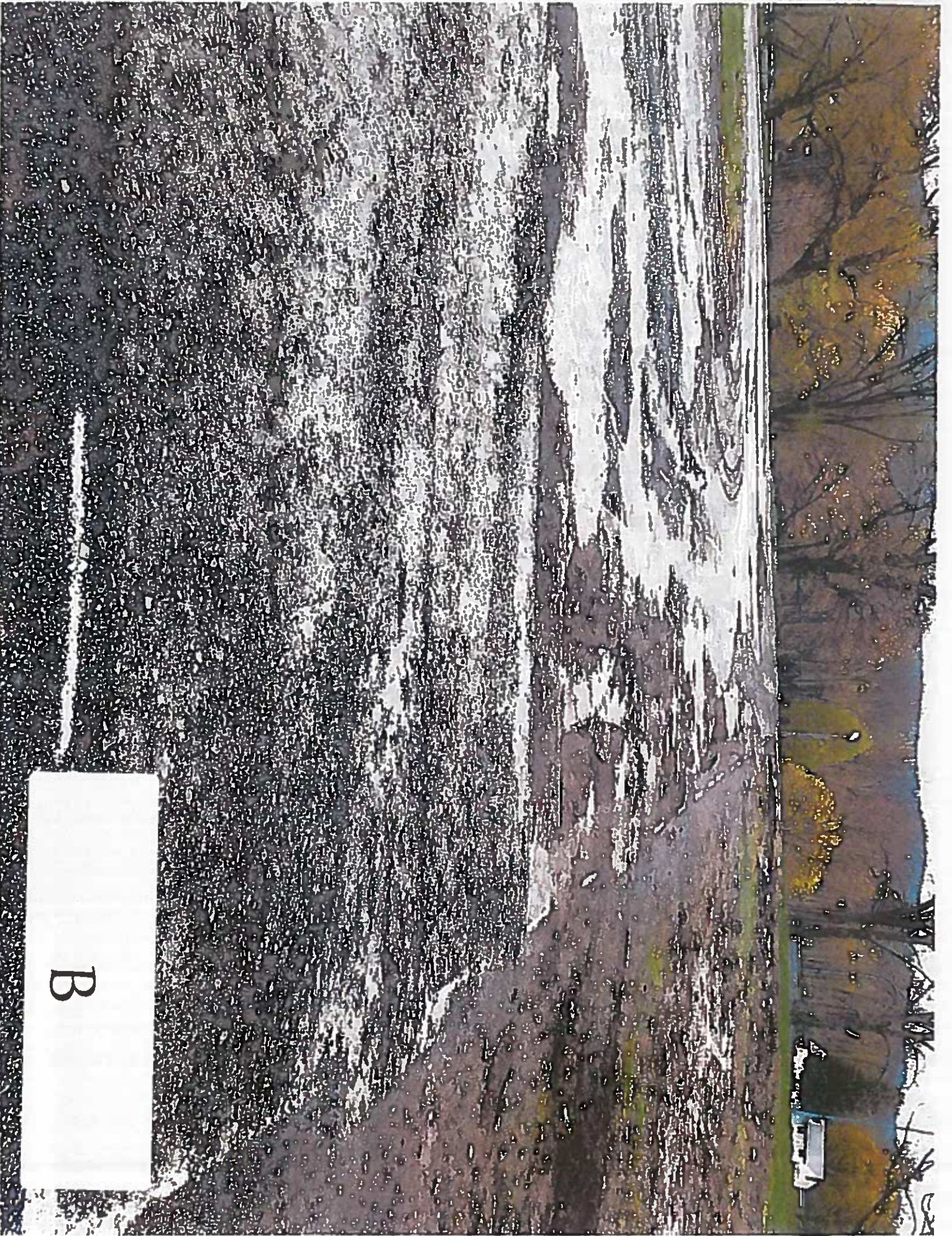
Village of Ellenville
Berme Road Park Paving Project
Closeout Report
Accomplishments of the Plan

- a. *UC Contract Complete*
January 2017, Contract between Village and Ulster County is executed
- b. *Site Prep*
Strip and remove existing damaged asphalt and dispose of material. Completed with village staff
- c. *Crushed Stone Sub-base*
Grade subsurface and install crushed stone subbase. Install and grade wing gutter on one side and install and grade access road (approx. 490' x 22'). Furnish and install 2" crushed stone subbase and grade sub base on all areas. Completed with combination of Village staff and contractor.
- d. *Asphalt Binder.*
Furnish and install truing and leveling asphalt, 2.5" 19mm binder and asphalt to all areas. Completed by contractor.
- e. *Asphalt Top*
Furnish and install top layer of 1.5" Superpave 2.5" 19mm binder to all areas. Completed by contractor
- h. *Lot striped*
Stripe parking areas, Install directional arrows, accessible parking, and no-parking zones With paint. Completed by Village staff.

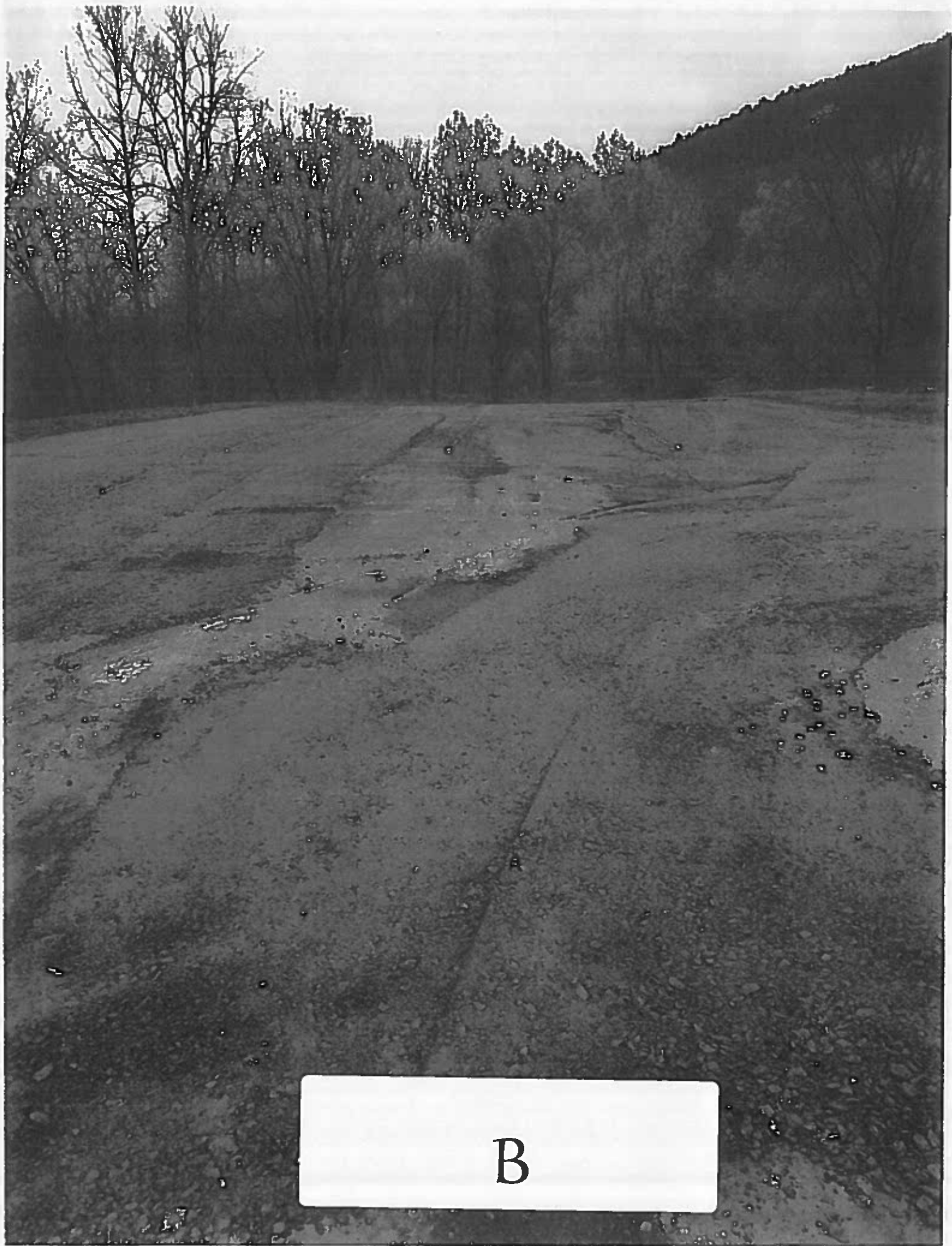
See hand photo



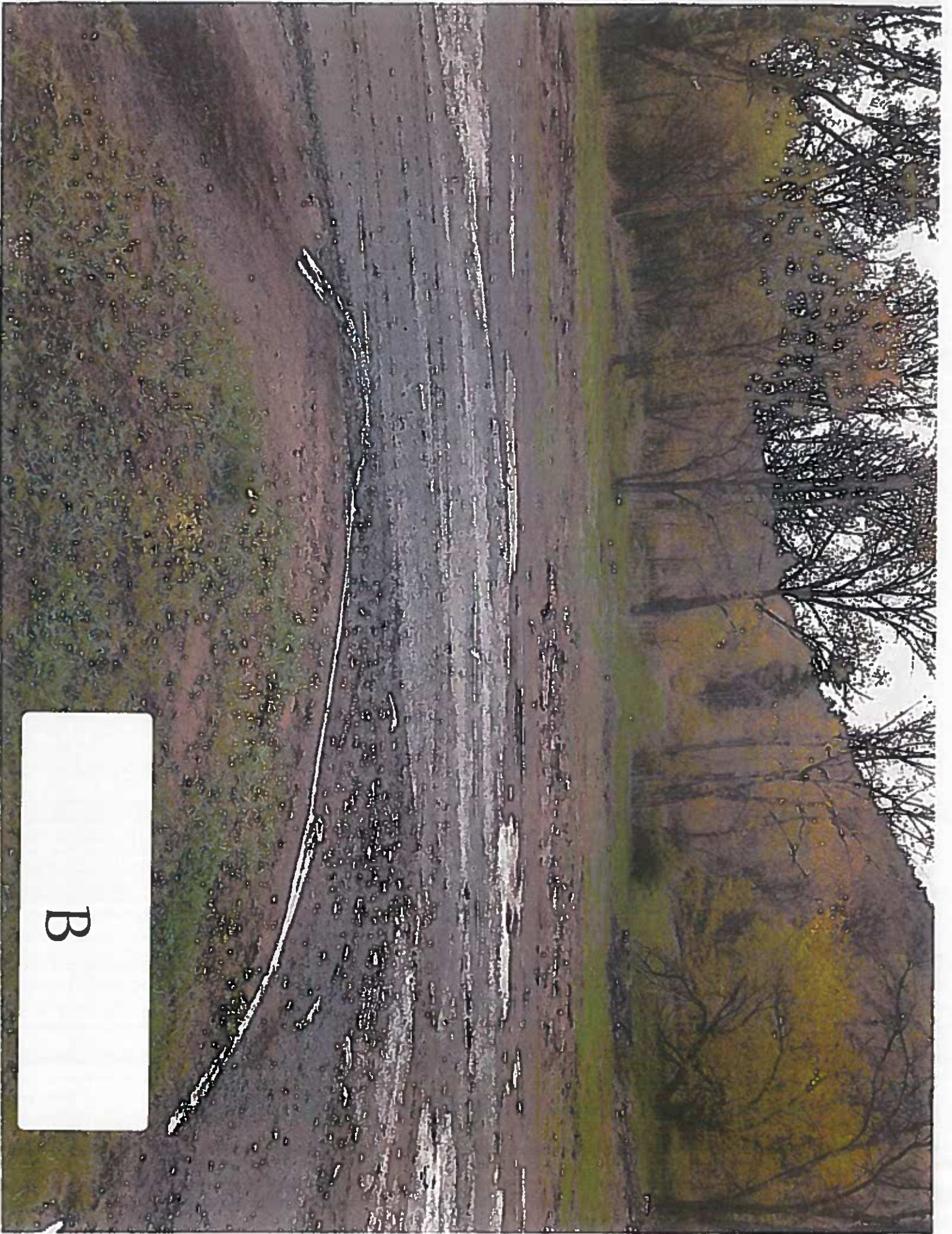
A



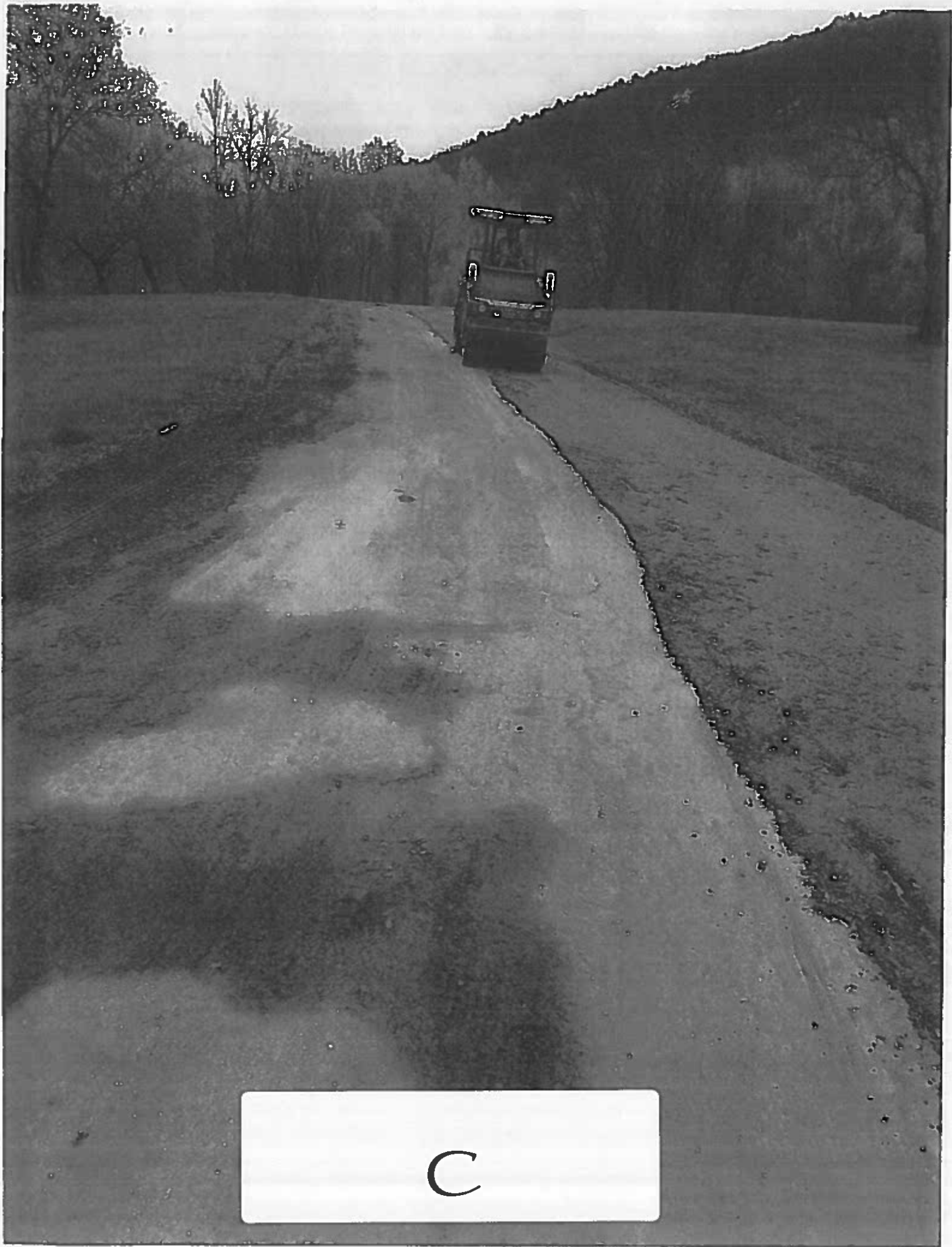
B



B



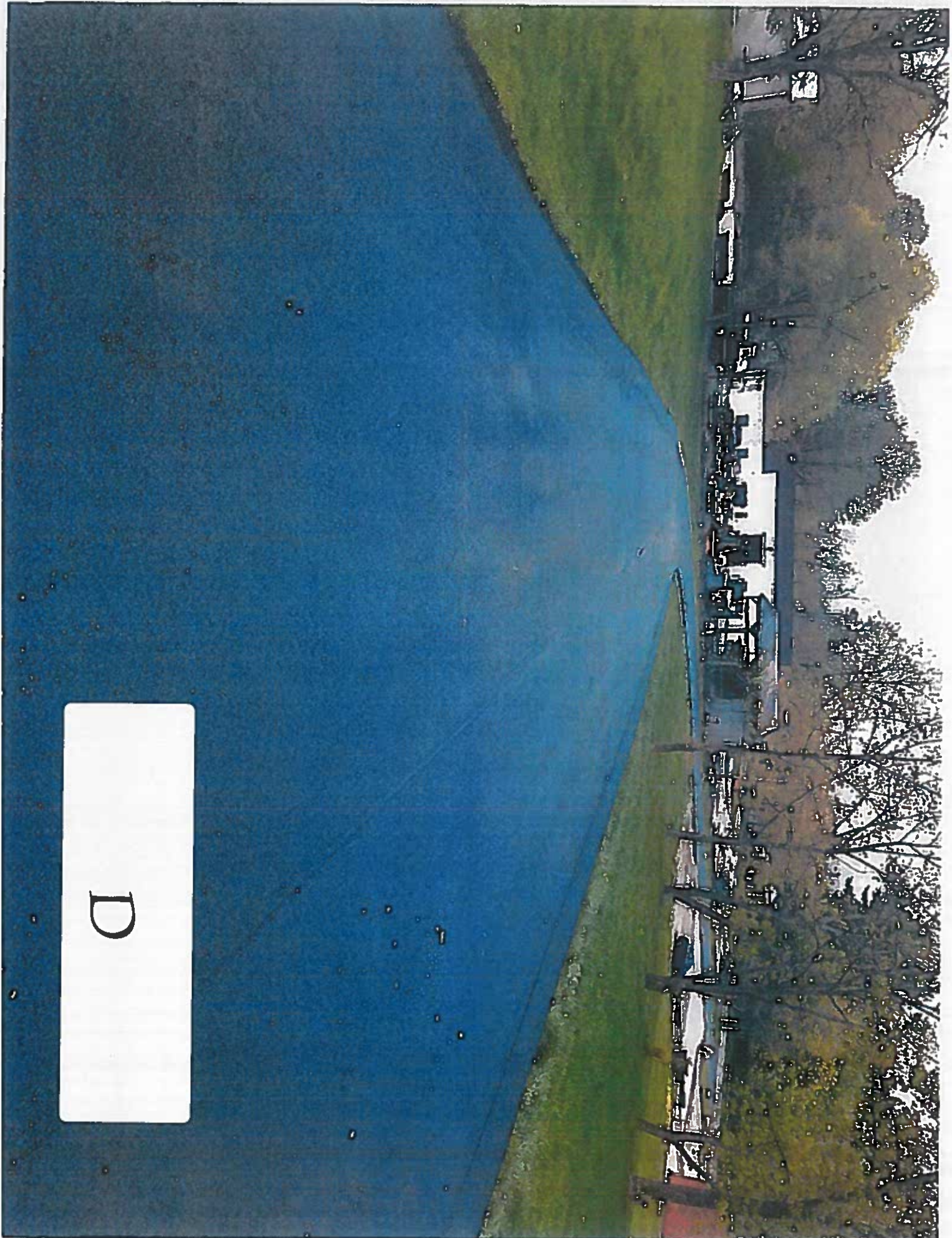
B



C



D

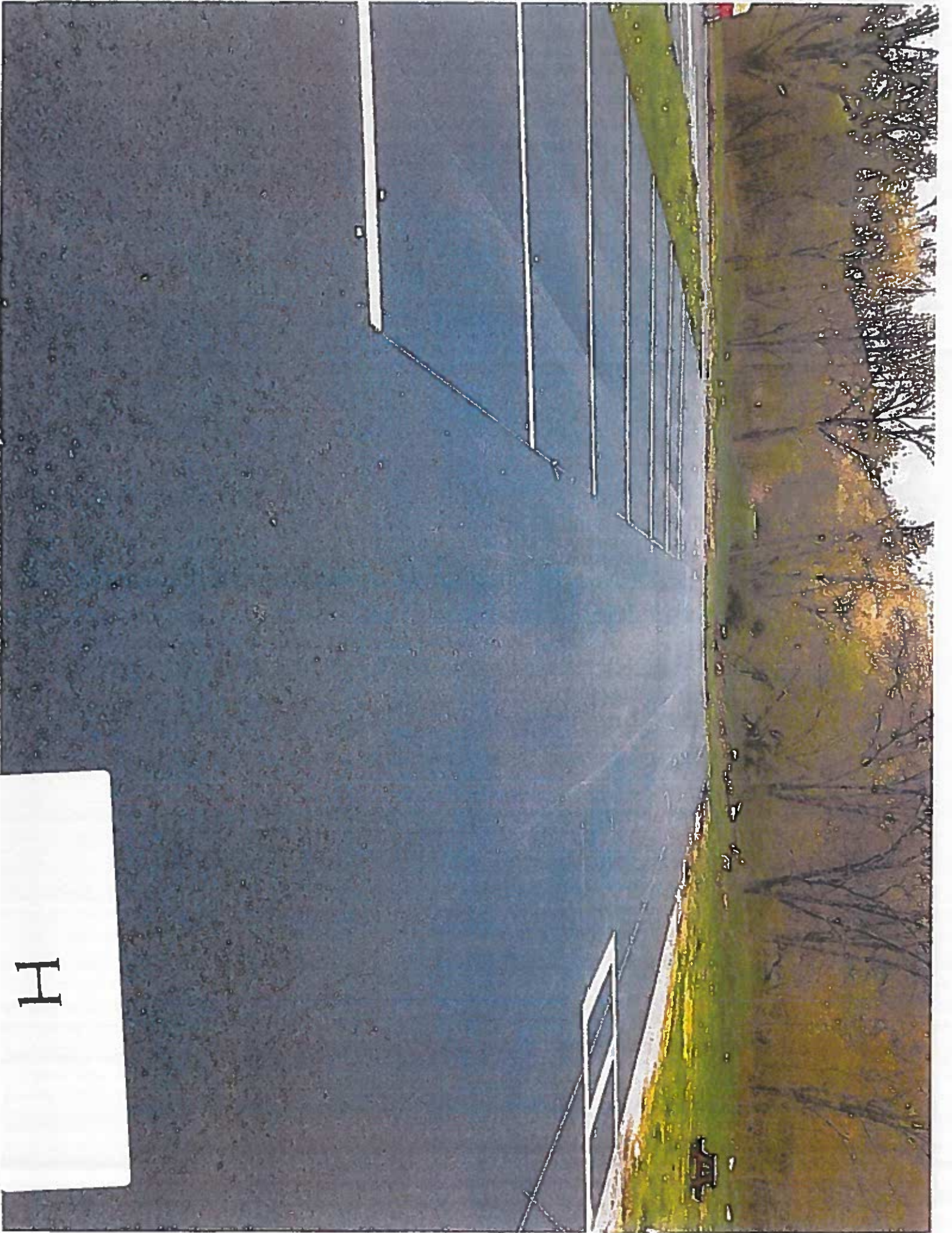


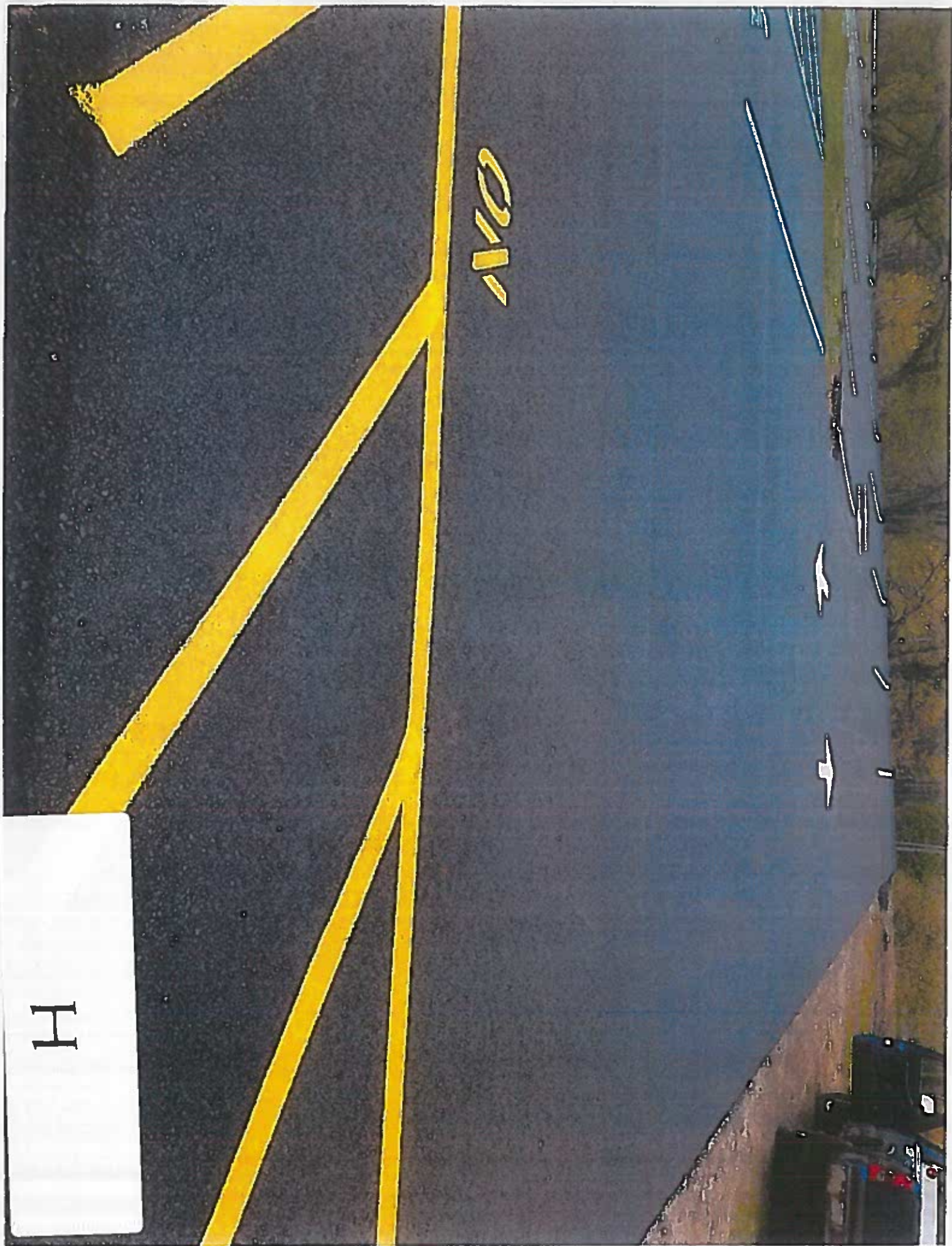
D



H

H





H

Village of Ellenville
Berme Road Park Kiosk Project
Closeout Report
Accomplishments of the Plan

- a. *UC Contract Complete*
January 2017, Contract between Village and Ulster County is executed

- b. *Site Prep*
Clear and grub selected kiosk site, import fill, and grade for proper drainage. Completed with village staff

- c. *Construct/Install Foundation*
Excavate, form, install rebar, and pour footers. Install and level concrete block knee walls on footer. Install decorative facing faux stone on block. Completed by town of Wawarsing staff and contractor.

- d. *Framing/Carpentry*
Frame and construct kiosk including trim and signage panels out of cedar lumber. Bolt framing to foundation. Completed by town of Wawarsing staff.

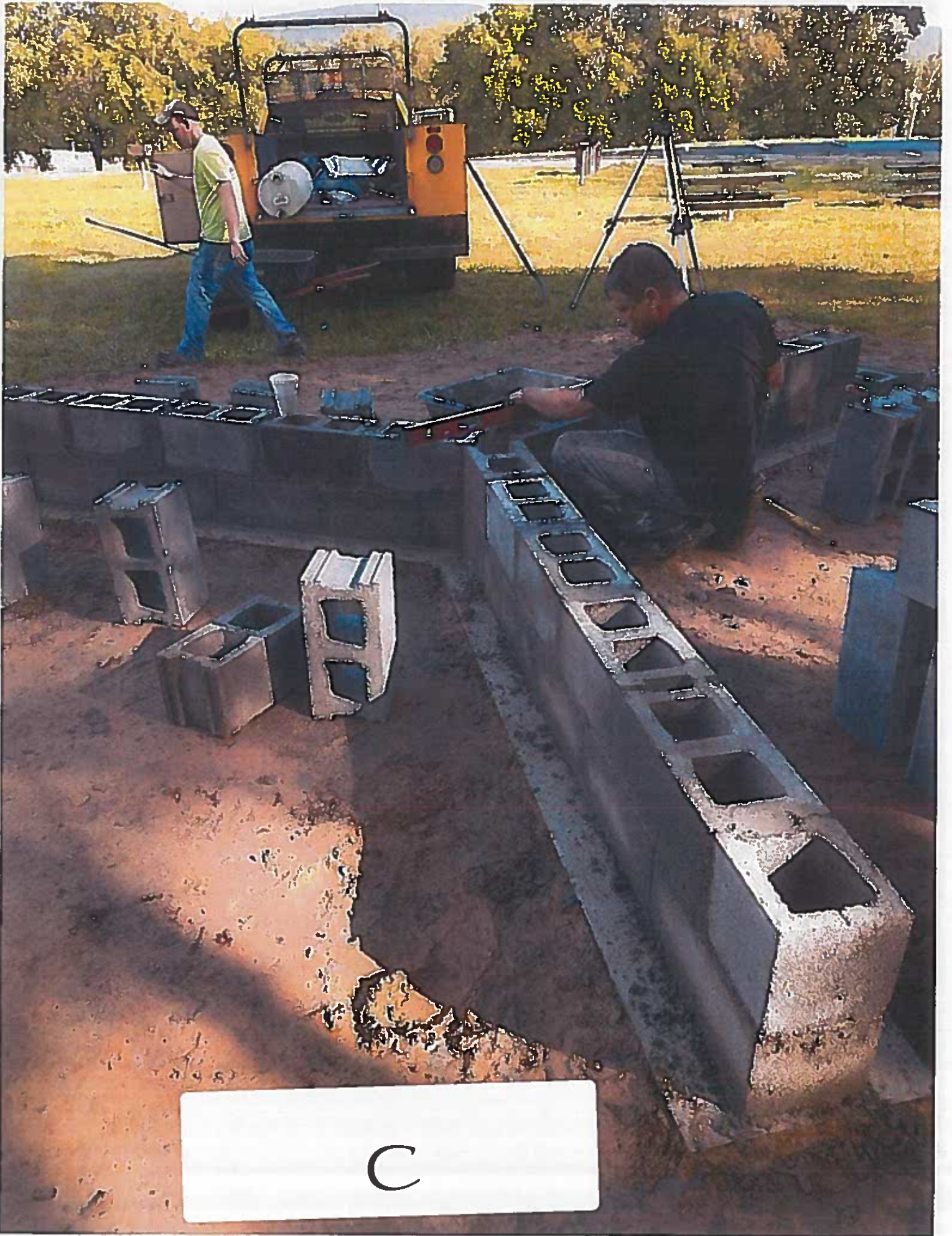
- e. *Roofing*
Install cedar shake roof. Completed by town of Wawarsing staff.

- h. *Signage*
Fabricate and install variety of weatherproof signage on panels of kiosk. Completed by Village staff, town of Wawarsing staff, NYS parks staff, and

See layout plan



B

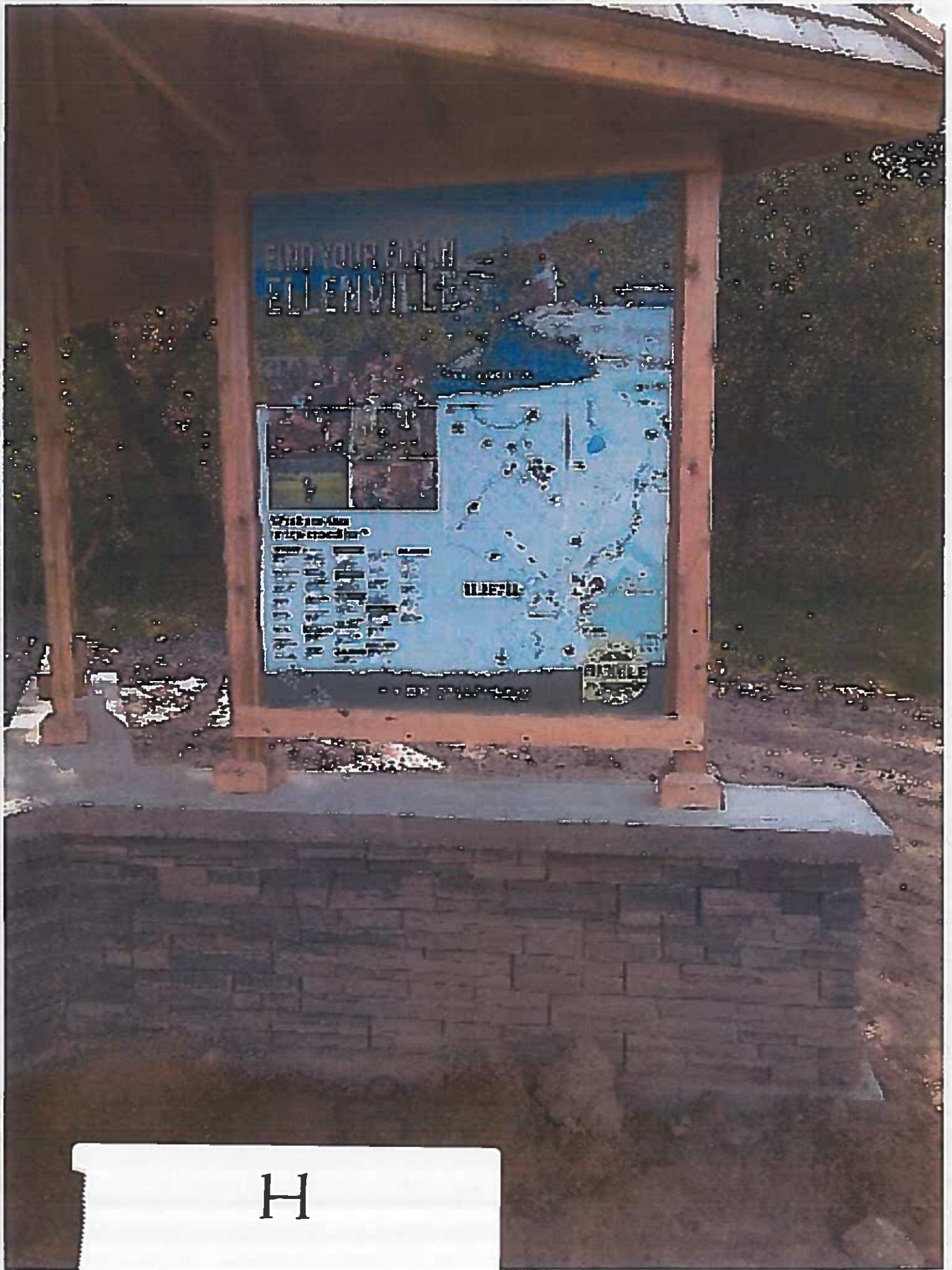


C





E



H