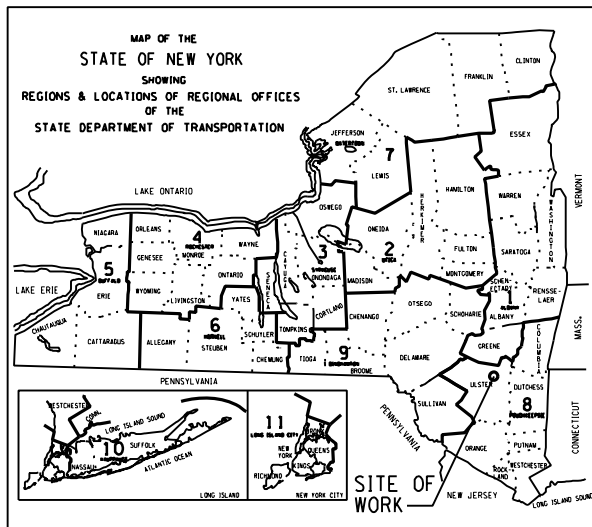
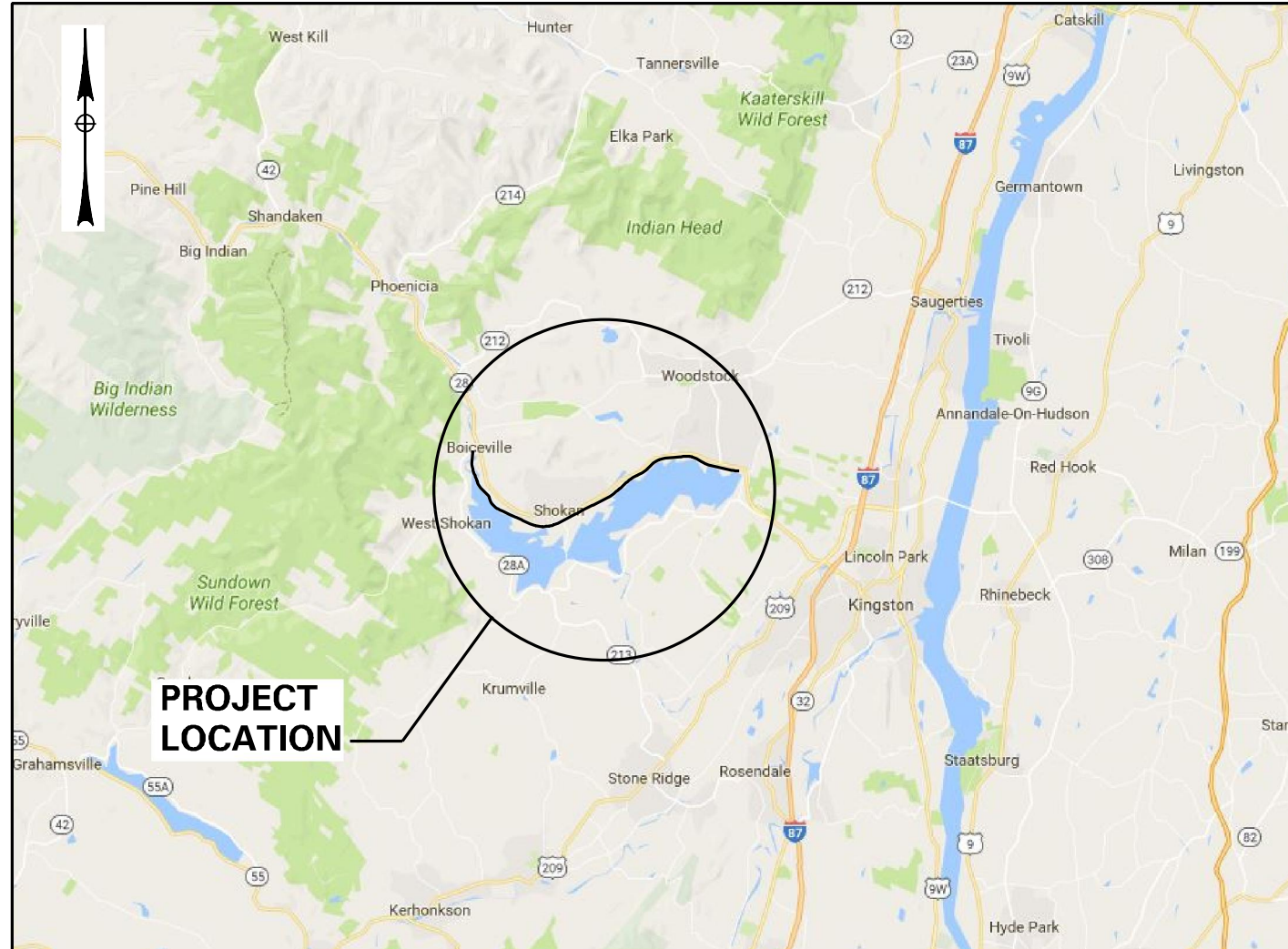


IN CHARGE OF _____ DESIGNED BY _____ CHECKED BY _____ ESTIMATED BY _____ CHECKED BY _____ DRAFTED BY _____ CHECKED BY _____



ASHOKAN RAIL TRAIL ULSTER COUNTY

TREE REMOVAL CONTRACT DRAWINGS SEPTEMBER 15, 2017



PROJECT LOCATION

| | |
|-----------------------------|---------|
| CONTRACTOR'S NAME _____ | |
| AWARD DATE _____ | |
| COMPLETION DATE _____ | |
| FINAL ACCEPTANCE DATE _____ | |
| ENGINEER IN CHARGE _____ | |
| FINAL COST TOTAL _____ | |
| FISCAL SHARE _____ | COST(S) |



| | |
|--|------|
| PREPARED AND RECOMMENDED BY | |
| | |
| THOMAS C. BAIRD, P.E. | DATE |
| NEW YORK STATE PROFESSIONAL ENGINEERS LICENSE NO. 074590 | |



Source: Esri, DigitalGlobe, GeoEye, Earthstar Geographics, CNES/Airbus DS, USDA, USGS, AEX, Getmapping, Aerogrid, IGN, IGP, swisstopo, and the GIS User Community, Esri, HERE, DeLorme, MapmyIndia, © OpenStreetMap contributors, Esri, HERE, DeLorme, MapmyIndia, © OpenStreetMap contributors, and the GIS user community

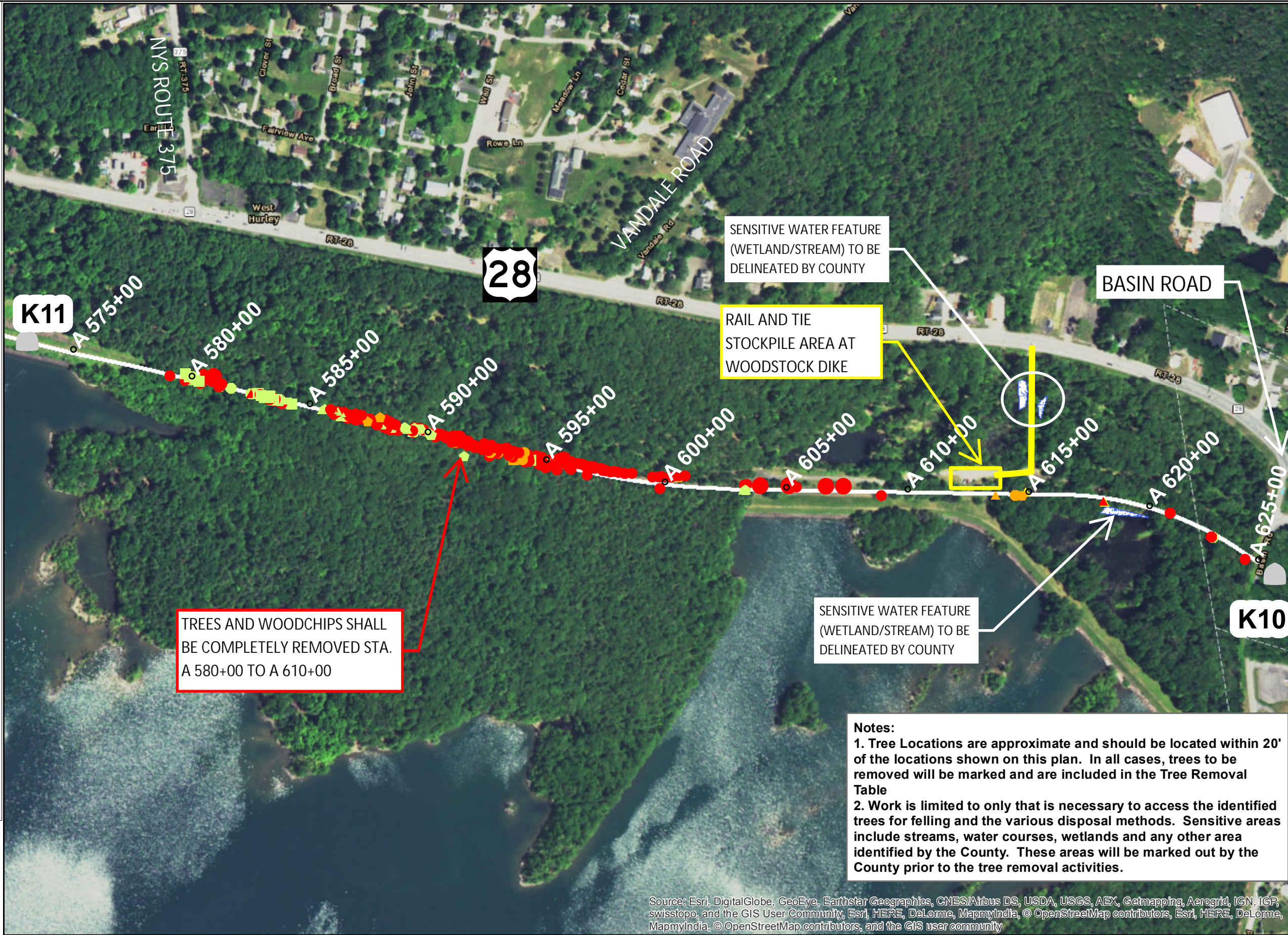


Legend

Trees K10_K11

Status, DBH_range, Species (Segment Quantity)

- alive, 4-14, Birch (20)
- alive, 4-14, Maple (20)
- alive, 4-14, Oak (2)
- alive, 4-14, Other (3)
- ▲ alive, 4-14, Pine (9)
- dead standing, 15-24, Ash (11)
- dead standing, 4-14, Ash (157)
- ◆ dead standing, 4-14, Birch (1)
- dead standing, 4-14, Other (3)
- ▲ dead standing, 4-14, Pine (3)
- down, 4-14, Ash (7)
- ◆ down, 4-14, Birch (3)
- down, 4-14, Maple (1)
- down, 4-14, Oak (1)
- down, 4-14, Other (3)
- ▲ down, 4-14, Pine (1)
- stressed, 4-14, Oak (1)
- ▲ stressed, 4-14, Pine (2)
- Milepost
- Access and Staging
- Streams
- Wetlands



Notes:

1. Tree Locations are approximate and should be located within 20' of the locations shown on this plan. In all cases, trees to be removed will be marked and are included in the Tree Removal Table
2. Work is limited to only that is necessary to access the identified trees for felling and the various disposal methods. Sensitive areas include streams, water courses, wetlands and any other area identified by the County. These areas will be marked out by the County prior to the tree removal activities.

Source: Esri, DigitalGlobe, GeoEye, Earthstar Geographics, CNES/Airbus DS, USDA, USGS, AEX, Getmapping, Aerogrid, IGN, IGP, swisstopo, and the GIS User Community, Esri, HERE, DeLorme, MapmyIndia, © OpenStreetMap contributors, Esri, HERE, DeLorme, MapmyIndia, © OpenStreetMap contributors, and the GIS user community

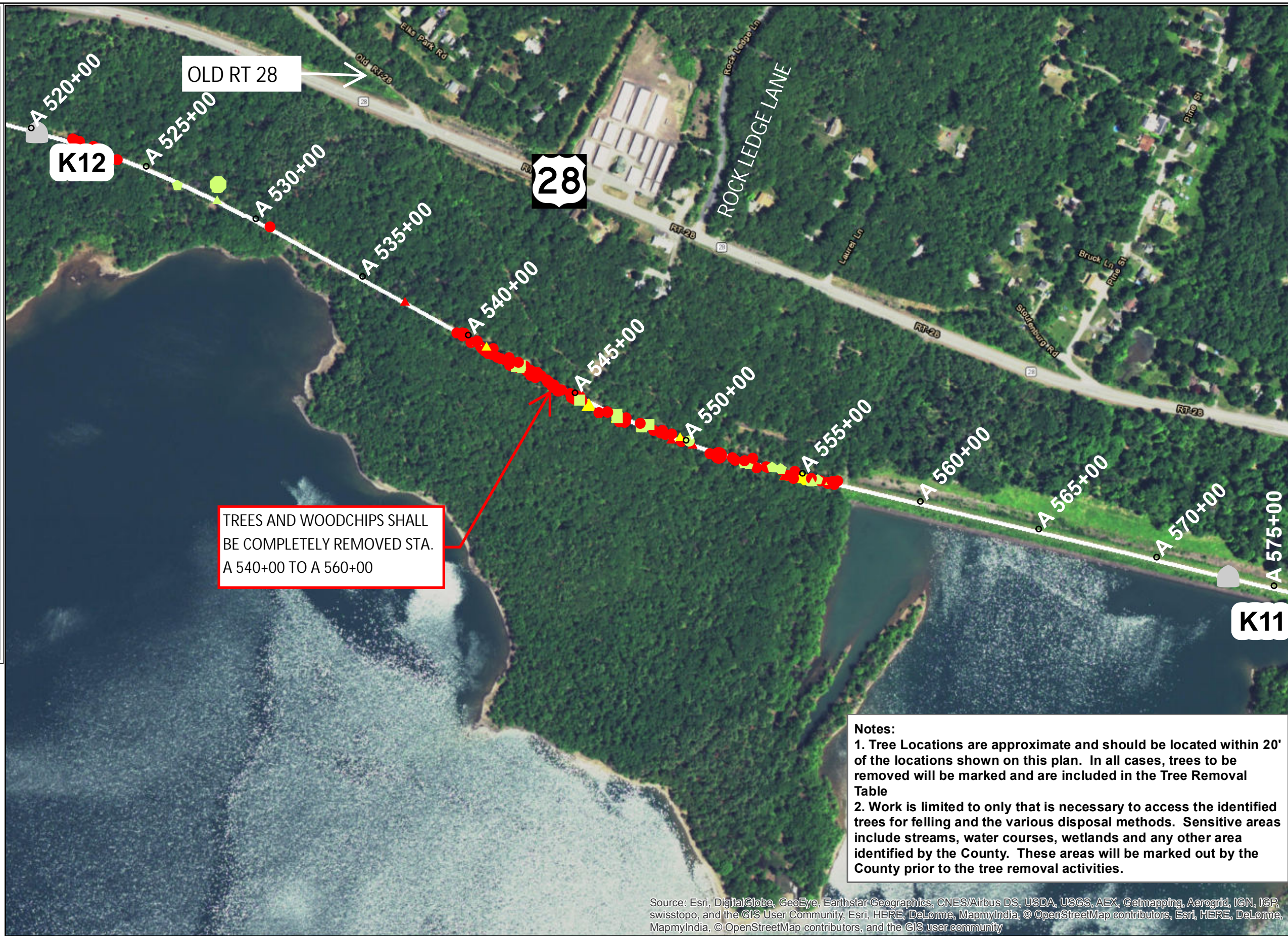


Legend

Trees K11_K12

Status, DBH_range, Species (Segment Quantity)

- alive, 15-24, Other (1)
- alive, 4-14, Ash (1)
- ◆ alive, 4-14, Birch (15)
- alive, 4-14, Maple (11)
- ▲ alive, 4-14, Pine (5)
- dead standing, 15-24, Ash (1)
- dead standing, 4-14, Ash (105)
- ▲ dead standing, 4-14, Pine (5)
- ▲ down, 4-14, Pine (1)
- ▲ stressed, 15-24, Pine (1)
- ◆ stressed, 4-14, Birch (1)
- stressed, 4-14, Other (2)
- ▲ stressed, 4-14, Pine (9)
- Milepost
- Access and Staging
- Streams
- ▭ Wetlands



TREES AND WOODCHIPS SHALL BE COMPLETELY REMOVED STA. A 540+00 TO A 560+00

Notes:

1. Tree Locations are approximate and should be located within 20' of the locations shown on this plan. In all cases, trees to be removed will be marked and are included in the Tree Removal Table
2. Work is limited to only that is necessary to access the identified trees for felling and the various disposal methods. Sensitive areas include streams, water courses, wetlands and any other area identified by the County. These areas will be marked out by the County prior to the tree removal activities.

Source: Esri, DigitalGlobe, GeoEye, Earthstar Geographics, CNES/Airbus DS, USDA, USGS, AEX, Getmapping, Aerogrid, IGN, IGP, swisstopo, and the GIS User Community, Esri, HERE, DeLorme, MapmyIndia, © OpenStreetMap contributors, Esri, HERE, DeLorme, MapmyIndia, © OpenStreetMap contributors, and the GIS user community

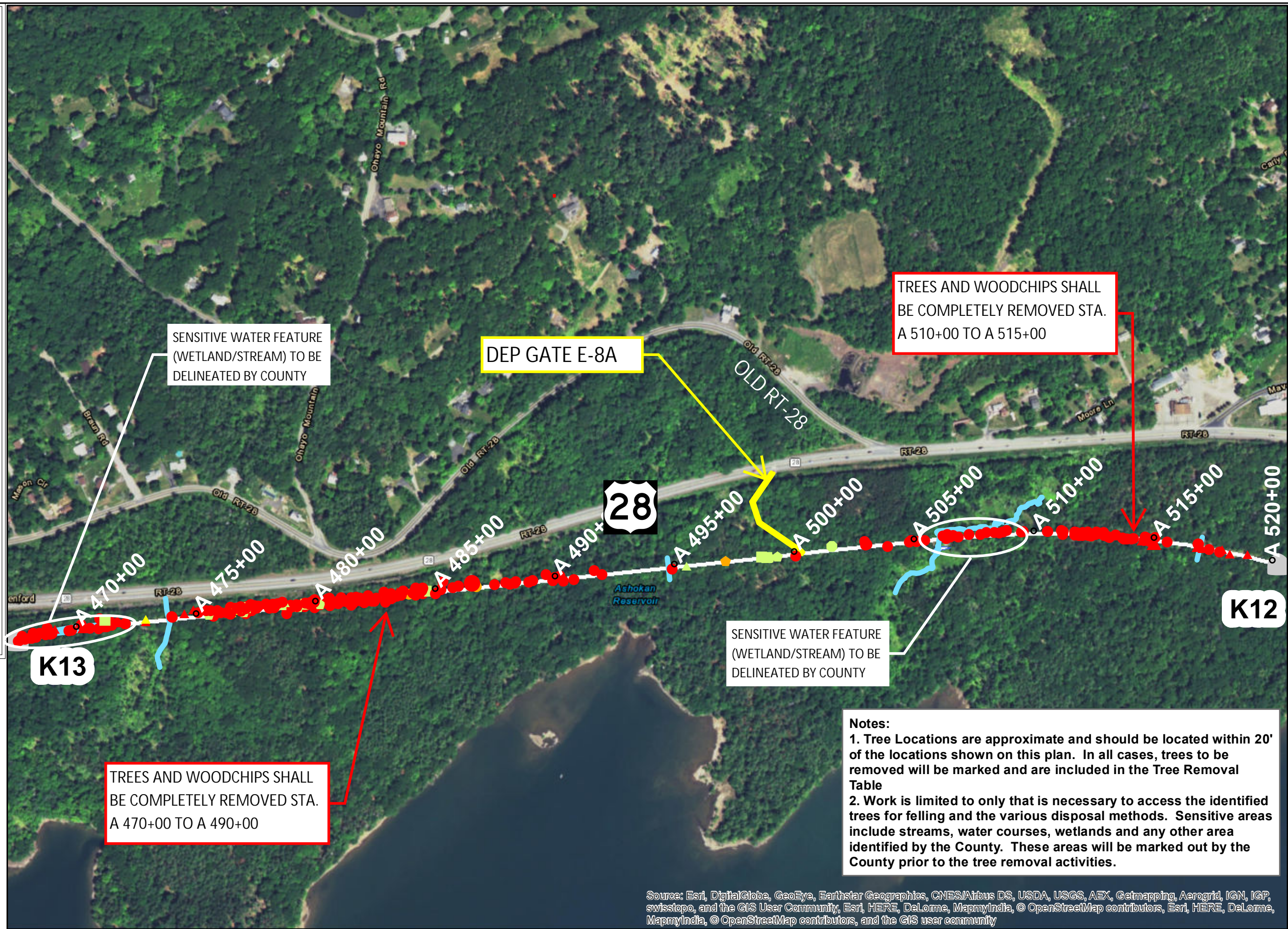


Legend

Trees K12_K13

Status, DBH_range, Species (Segment Quantity)

- ◆ alive, 4-14, Birch (6)
- alive, 4-14, Maple (9)
- alive, 4-14, Other (1)
- ▲ alive, 4-14, Pine (2)
- dead standing, 15-24, Ash (1)
- ▲ dead standing, 15-24, Pine (1)
- dead standing, 4-14, Ash (275)
- ◆ dead standing, 4-14, Birch (1)
- ▲ dead standing, 4-14, Pine (25)
- down, 4-14, Ash (2)
- ◆ down, 4-14, Birch (1)
- stressed, 4-14, Ash (1)
- ▲ stressed, 4-14, Pine (3)
- Milepost
- Access and Staging
- Streams
- ▨ Wetlands



Notes:
 1. Tree Locations are approximate and should be located within 20' of the locations shown on this plan. In all cases, trees to be removed will be marked and are included in the Tree Removal Table
 2. Work is limited to only that is necessary to access the identified trees for felling and the various disposal methods. Sensitive areas include streams, water courses, wetlands and any other area identified by the County. These areas will be marked out by the County prior to the tree removal activities.

Source: Esri, DigitalGlobe, GeoEye, Earthstar Geographics, CNES/Airbus DS, USDA, USGS, AEX, Getmapping, Aerogrid, IGN, IGP, swisstopo, and the GIS User Community, Esri, HERE, DeLorme, MapmyIndia, © OpenStreetMap contributors, Esri, HERE, DeLorme, MapmyIndia, © OpenStreetMap contributors, and the GIS user community

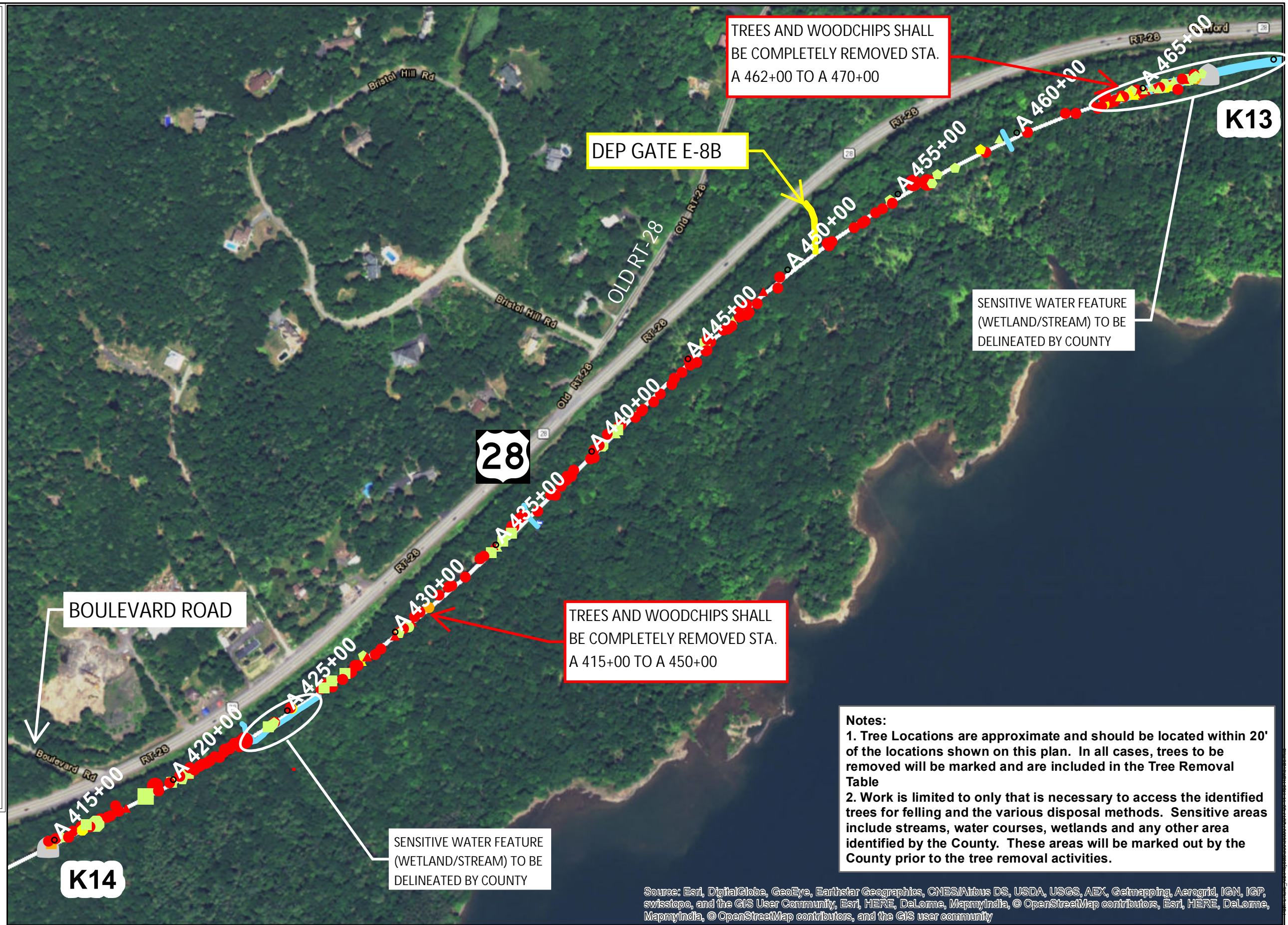


Legend

Trees K13_K14

Status, DBH_range, Species (Segment Quantity)

- alive, 15-24, Maple (1)
- alive, 15-24, Other (1)
- alive, 4-14, Ash (1)
- alive, 4-14, Birch (15)
- alive, 4-14, Maple (23)
- alive, 4-14, Oak (2)
- alive, 4-14, Other (3)
- ▲ alive, 4-14, Pine (12)
- dead standing, 15-24, Ash (4)
- dead standing, 4-14, Ash (207)
- dead standing, 4-14, Oak (1)
- ▲ dead standing, 4-14, Pine (17)
- down, 4-14, Ash (3)
- down, 4-14, Maple (1)
- stressed, 4-14, Ash (2)
- stressed, 4-14, Birch (2)
- stressed, 4-14, Other (4)
- ▲ stressed, 4-14, Pine (5)
- Milepost
- Access and Staging
- Streams
- Wetlands



Notes:

1. Tree Locations are approximate and should be located within 20' of the locations shown on this plan. In all cases, trees to be removed will be marked and are included in the Tree Removal Table
2. Work is limited to only that is necessary to access the identified trees for felling and the various disposal methods. Sensitive areas include streams, water courses, wetlands and any other area identified by the County. These areas will be marked out by the County prior to the tree removal activities.

Source: Esri, DigitalGlobe, GeoEye, Earthstar Geographics, CNES/Airbus DS, USDA, USGS, AEX, Getmapping, Aerogrid, IGN, IGP, swisstopo, and the GIS User Community, Esri, HERE, DeLorme, MapmyIndia, © OpenStreetMap contributors, Esri, HERE, DeLorme, MapmyIndia, © OpenStreetMap contributors, and the GIS user community

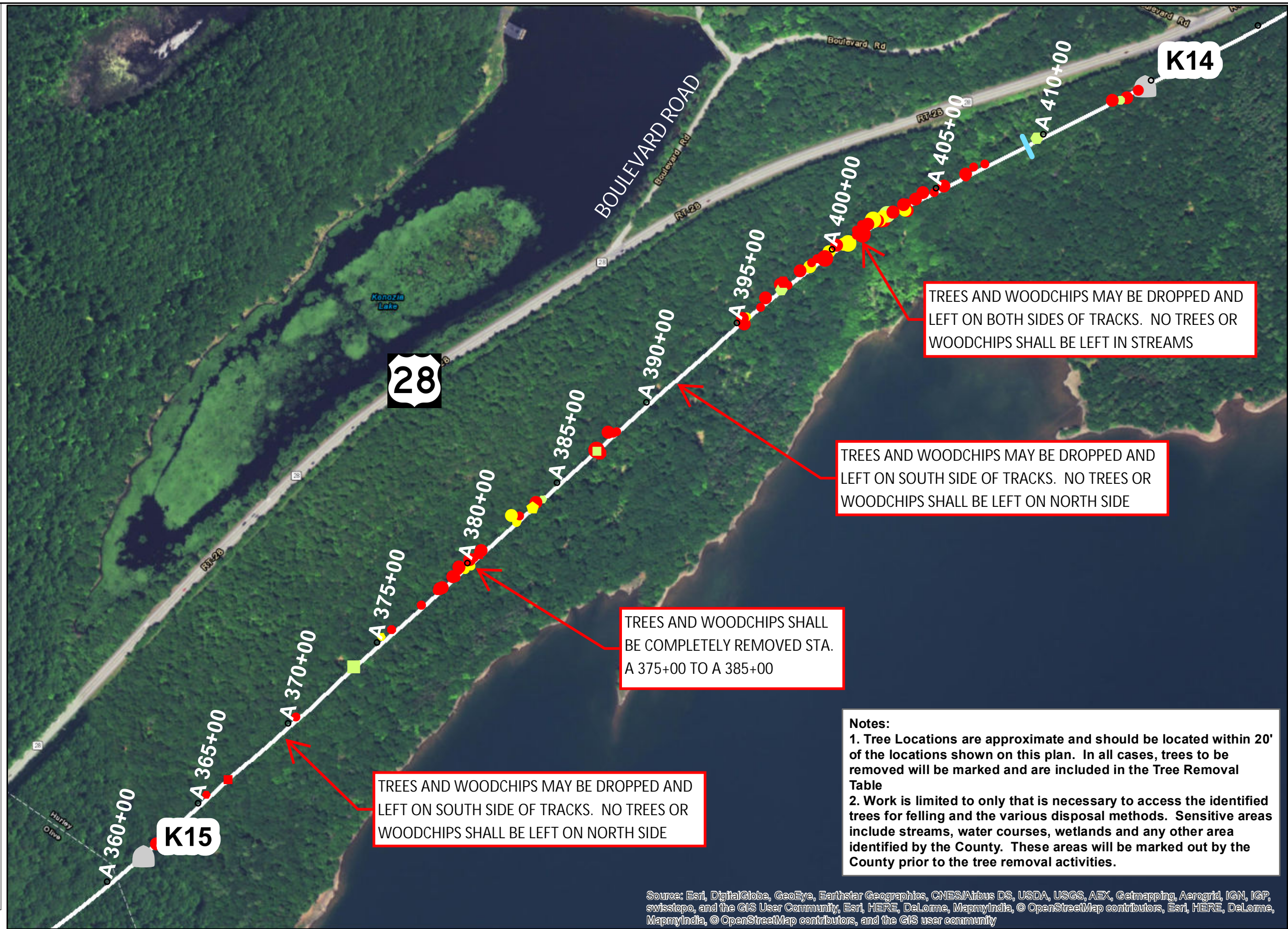


Legend

Trees K14_K15

Status, DBH_range, Species (Segment Quantity)

- alive, 15-24, Ash (1)
- alive, 4-8, Birch (1)
- alive, 4-8, Maple (1)
- alive, 4-8, Oak (1)
- alive, 4-8, Other (1)
- alive, 9-14, Maple (1)
- alive, 9-14, Oak (3)
- dead standing, 15-24, Ash (3)
- dead standing, 4-14, Ash (1)
- dead standing, 4-8, Ash (34)
- dead standing, 4-8, Maple (2)
- dead standing, 4-8, Oak (1)
- dead standing, 4-8, Other (1)
- dead standing, 9-14, Ash (32)
- dead standing, 9-14, Oak (2)
- dead standing, 9-14, Other (1)
- stressed, 15-24, Ash (2)
- stressed, 4-8, Ash (5)
- stressed, 4-8, Oak (1)
- stressed, 9-14, Ash (7)
- stressed, 9-14, Birch (1)
- Milepost
- Access and Staging
- Streams
- Wetlands



TREES AND WOODCHIPS MAY BE DROPPED AND LEFT ON BOTH SIDES OF TRACKS. NO TREES OR WOODCHIPS SHALL BE LEFT IN STREAMS

TREES AND WOODCHIPS MAY BE DROPPED AND LEFT ON SOUTH SIDE OF TRACKS. NO TREES OR WOODCHIPS SHALL BE LEFT ON NORTH SIDE

TREES AND WOODCHIPS SHALL BE COMPLETELY REMOVED STA. A 375+00 TO A 385+00

TREES AND WOODCHIPS MAY BE DROPPED AND LEFT ON SOUTH SIDE OF TRACKS. NO TREES OR WOODCHIPS SHALL BE LEFT ON NORTH SIDE

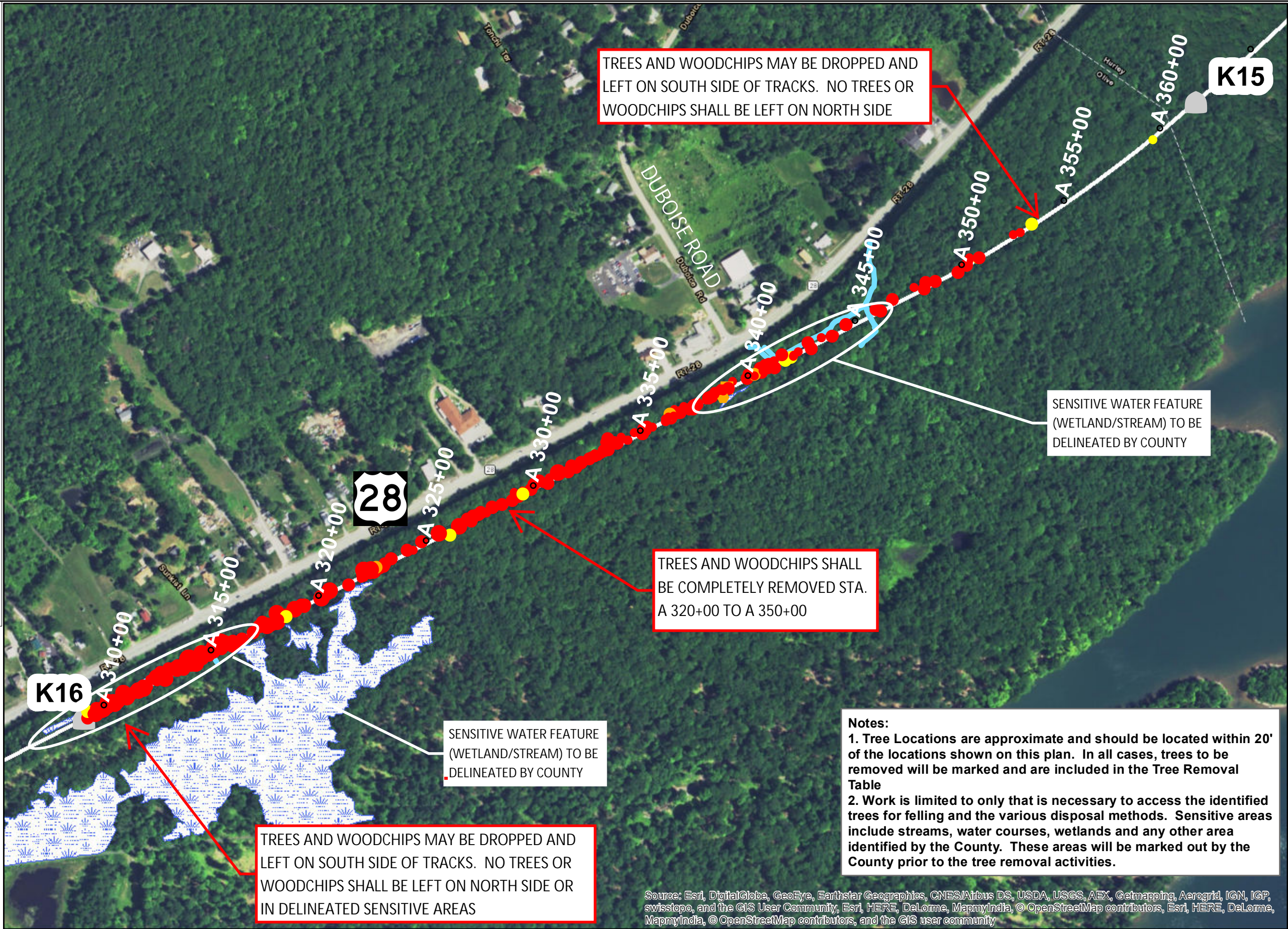
Notes:
 1. Tree Locations are approximate and should be located within 20' of the locations shown on this plan. In all cases, trees to be removed will be marked and are included in the Tree Removal Table
 2. Work is limited to only that is necessary to access the identified trees for felling and the various disposal methods. Sensitive areas include streams, water courses, wetlands and any other area identified by the County. These areas will be marked out by the County prior to the tree removal activities.

Source: Esri, DigitalGlobe, GeoEye, Earthstar Geographics, CNES/Airbus DS, USDA, USGS, AEX, Getmapping, Aerogrid, IGN, IGP, swisstopo, and the GIS User Community, Esri, HERE, DeLorme, MapmyIndia, © OpenStreetMap contributors, Esri, HERE, DeLorme, MapmyIndia, © OpenStreetMap contributors, and the GIS user community



Legend

- Trees K15_K16**
 Status, DBH_range, Species (Segment Quantity)
- dead standing, 15-24, Ash (36)
 - dead standing, 25-34, Ash (3)
 - dead standing, 4-8, Ash (163)
 - dead standing, 4-8, Birch (1)
 - dead standing, 4-8, Maple (1)
 - dead standing, 4-8, Other (2)
 - dead standing, 9-14, Ash (144)
 - down, 9-14, Ash (3)
 - down, 9-14, Maple (1)
 - down, 9-14, Oak (1)
 - stressed, 4-8, Ash (4)
 - stressed, 9-14, Ash (9)
 - Milepost
 - Access and Staging
 - Streams
 - Wetlands



TREES AND WOODCHIPS MAY BE DROPPED AND LEFT ON SOUTH SIDE OF TRACKS. NO TREES OR WOODCHIPS SHALL BE LEFT ON NORTH SIDE

TREES AND WOODCHIPS SHALL BE COMPLETELY REMOVED STA. A 320+00 TO A 350+00

SENSITIVE WATER FEATURE (WETLAND/STREAM) TO BE DELINEATED BY COUNTY

TREES AND WOODCHIPS MAY BE DROPPED AND LEFT ON SOUTH SIDE OF TRACKS. NO TREES OR WOODCHIPS SHALL BE LEFT ON NORTH SIDE OR IN DELINEATED SENSITIVE AREAS

Notes:
 1. Tree Locations are approximate and should be located within 20' of the locations shown on this plan. In all cases, trees to be removed will be marked and are included in the Tree Removal Table
 2. Work is limited to only that is necessary to access the identified trees for felling and the various disposal methods. Sensitive areas include streams, water courses, wetlands and any other area identified by the County. These areas will be marked out by the County prior to the tree removal activities.

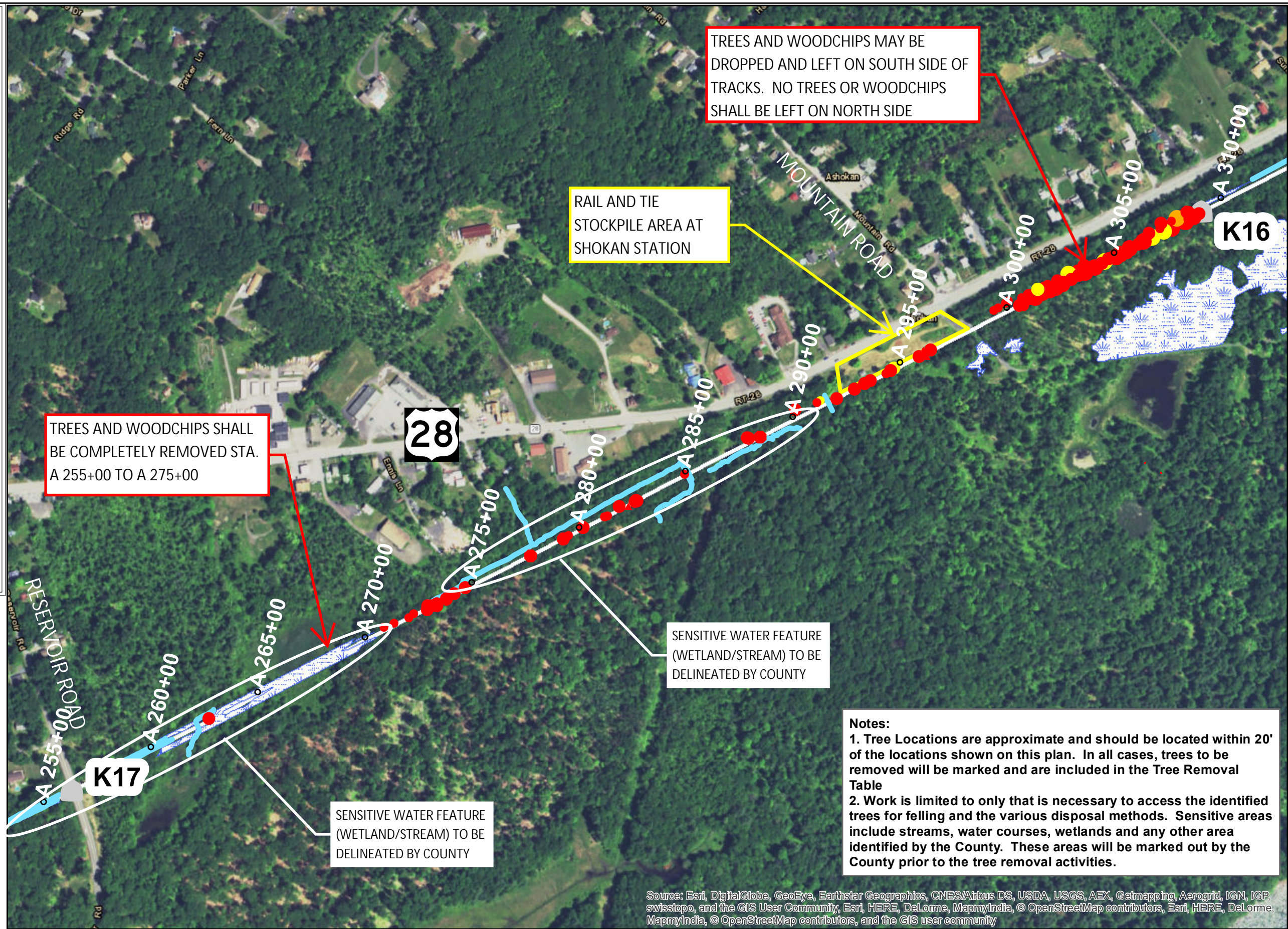
Source: Esri, DigitalGlobe, GeoEye, Earthstar Geographics, CNES/Airbus DS, USDA, USGS, AEX, Getmapping, Aerogrid, IGN, IGP, swisstopo, and the GIS User Community, Esri, HERE, DeLorme, MapmyIndia, © OpenStreetMap contributors, Esri, HERE, DeLorme, MapmyIndia, © OpenStreetMap contributors, and the GIS user community



1 inch = 400 feet

Legend

- Trees K16_K17**
 Status, DBH_range, Species (Segment Quantity)
- dead standing, 15-24, Ash (14)
 - ▲ dead standing, 15-24, Pine (1)
 - dead standing, 4-8, Ash (40)
 - dead standing, 4-8, Other (1)
 - ▲ dead standing, 4-8, Pine (1)
 - dead standing, 9-14, Ash (101)
 - dead standing, 9-14, Other (2)
 - down, 15-24, Ash (1)
 - stressed, 15-24, Ash (5)
 - stressed, 4-8, Ash (1)
 - stressed, 9-14, Ash (7)
 - Milepost
 - Access and Staging
 - Streams
 - Wetlands



Notes:

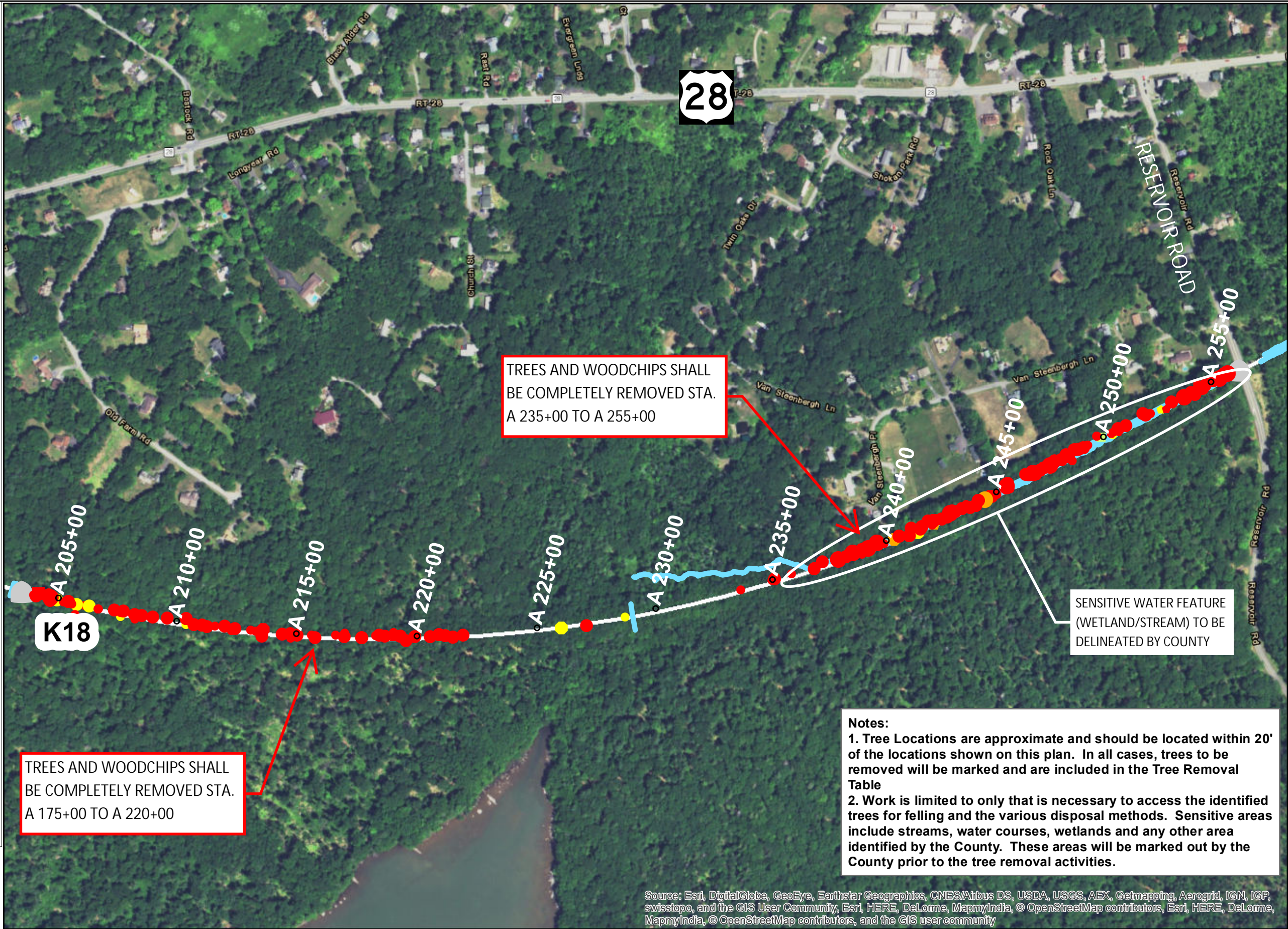
1. Tree Locations are approximate and should be located within 20' of the locations shown on this plan. In all cases, trees to be removed will be marked and are included in the Tree Removal Table
2. Work is limited to only that is necessary to access the identified trees for felling and the various disposal methods. Sensitive areas include streams, water courses, wetlands and any other area identified by the County. These areas will be marked out by the County prior to the tree removal activities.

Source: Esri, DigitalGlobe, GeoEye, Earthstar Geographics, CNES/Airbus DS, USDA, USGS, AEX, Getmapping, Aerogrid, IGN, IGP, swisstopo, and the GIS User Community, Esri, HERE, DeLorme, MapmyIndia, © OpenStreetMap contributors, Esri, HERE, DeLorme, MapmyIndia, © OpenStreetMap contributors, and the GIS user community



Legend

- Trees K17_K18**
Status, DBH_range, Species (Segment Quantity)
- alive, 4-8, Maple (1)
 - dead standing, 15-24, Ash (12)
 - dead standing, 4-8, Ash (90)
 - ◆ dead standing, 4-8, Birch (2)
 - dead standing, 4-8, Maple (1)
 - dead standing, 4-8, Other (2)
 - ▲ dead standing, 4-8, Pine (1)
 - dead standing, 9-14, Ash (118)
 - ◆ dead standing, 9-14, Birch (2)
 - dead standing, 9-14, Maple (1)
 - ◆ dead standing, 9-14, Oak (1)
 - dead standing, 9-14, Other (5)
 - down, 15-24, Ash (1)
 - ◆ down, 9-14, Birch (1)
 - down, 9-14, Other (1)
 - stressed, 4-8, Ash (4)
 - stressed, 4-8, Birch (2)
 - stressed, 9-14, Ash (4)
 - stressed, 9-14, Other (1)
 - Milepost
 - Access and Staging
 - Streams
 - Wetlands



TREES AND WOODCHIPS SHALL BE COMPLETELY REMOVED STA. A 235+00 TO A 255+00

TREES AND WOODCHIPS SHALL BE COMPLETELY REMOVED STA. A 175+00 TO A 220+00

SENSITIVE WATER FEATURE (WETLAND/STREAM) TO BE DELINEATED BY COUNTY

Notes:
 1. Tree Locations are approximate and should be located within 20' of the locations shown on this plan. In all cases, trees to be removed will be marked and are included in the Tree Removal Table
 2. Work is limited to only that is necessary to access the identified trees for felling and the various disposal methods. Sensitive areas include streams, water courses, wetlands and any other area identified by the County. These areas will be marked out by the County prior to the tree removal activities.

Source: Esri, DigitalGlobe, GeoEye, Earthstar Geographics, CNES/Airbus DS, USDA, USGS, AEX, Getmapping, Aerogrid, IGN, IGP, swisstopo, and the GIS User Community, Esri, HERE, DeLorme, MapmyIndia, © OpenStreetMap contributors, Esri, HERE, DeLorme, MapmyIndia, © OpenStreetMap contributors, and the GIS user community



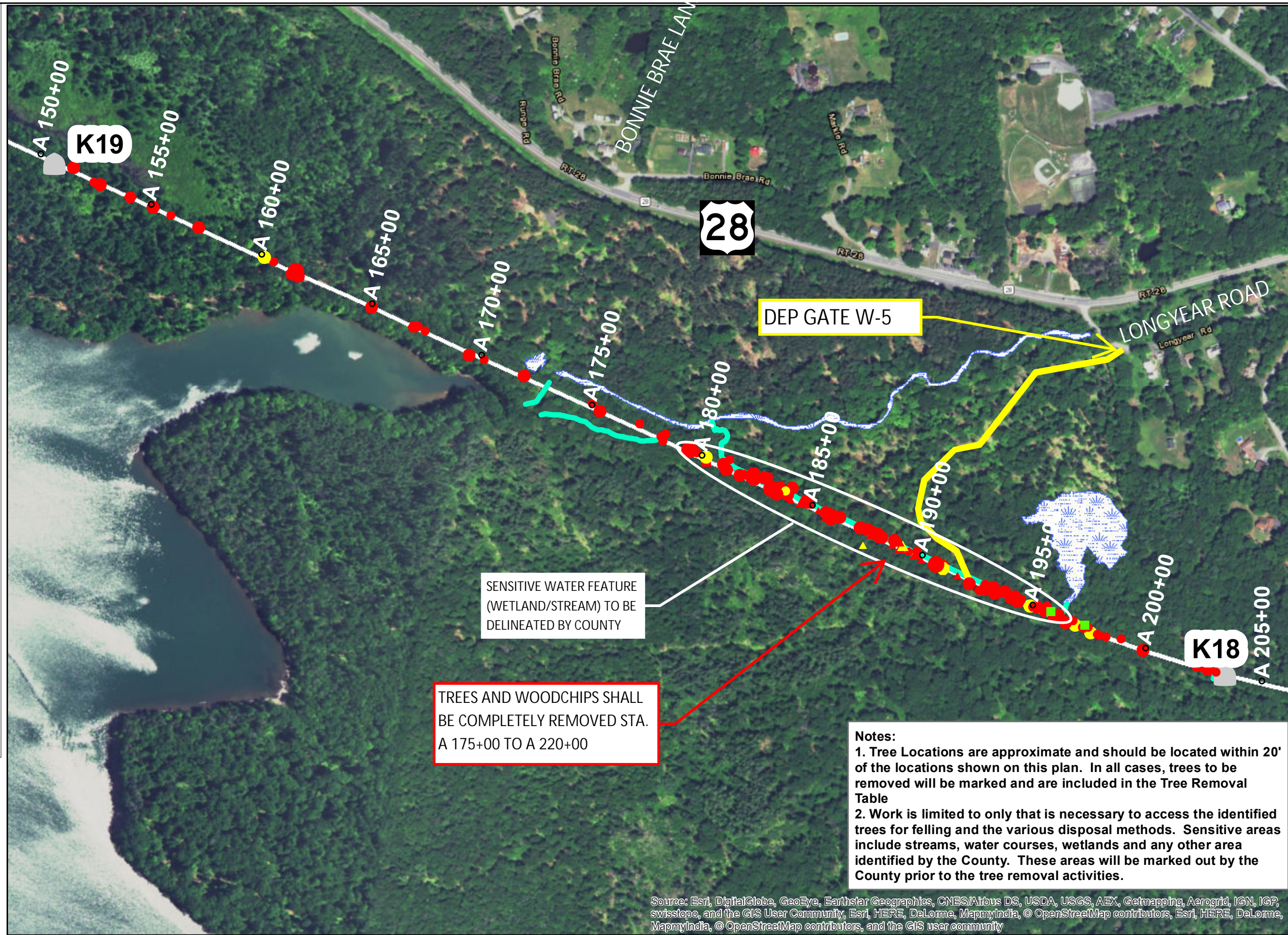
1 inch = 400 feet

Legend

Trees K18_K19

Status, DBH_range, Species (Segment Quantity)

- alive, 4-8, Maple (4)
- dead standing, 15-24, Ash (5)
- dead standing, 4-8, Ash (78)
- ◆ dead standing, 4-8, Birch (2)
- dead standing, 4-8, Maple (1)
- dead standing, 4-8, Other (2)
- ▲ dead standing, 4-8, Pine (23)
- dead standing, 9-14, Ash (61)
- ◆ dead standing, 9-14, Oak (2)
- dead standing, 9-14, Other (2)
- ▲ dead standing, 9-14, Pine (5)
- stressed, 4-8, Ash (2)
- ▲ stressed, 4-8, Pine (2)
- stressed, 9-14, Ash (10)
- stressed, 9-14, Other (1)
- ▲ stressed, 9-14, Pine (1)
- Milepost
- Access and Staging
- Streams
- Wetlands



TREES AND WOODCHIPS SHALL BE COMPLETELY REMOVED STA. A 175+00 TO A 220+00

Notes:

1. Tree Locations are approximate and should be located within 20' of the locations shown on this plan. In all cases, trees to be removed will be marked and are included in the Tree Removal Table
2. Work is limited to only that is necessary to access the identified trees for felling and the various disposal methods. Sensitive areas include streams, water courses, wetlands and any other area identified by the County. These areas will be marked out by the County prior to the tree removal activities.

Source: Esri, DigitalGlobe, GeoEye, Earthstar Geographics, CNES/Airbus DS, USDA, USGS, AEX, Getmapping, Aerogrid, IGN, IGP, swisstopo, and the GIS User Community, Esri, HERE, DeLorme, MapmyIndia, © OpenStreetMap contributors, Esri, HERE, DeLorme, MapmyIndia, © OpenStreetMap contributors, and the GIS user community

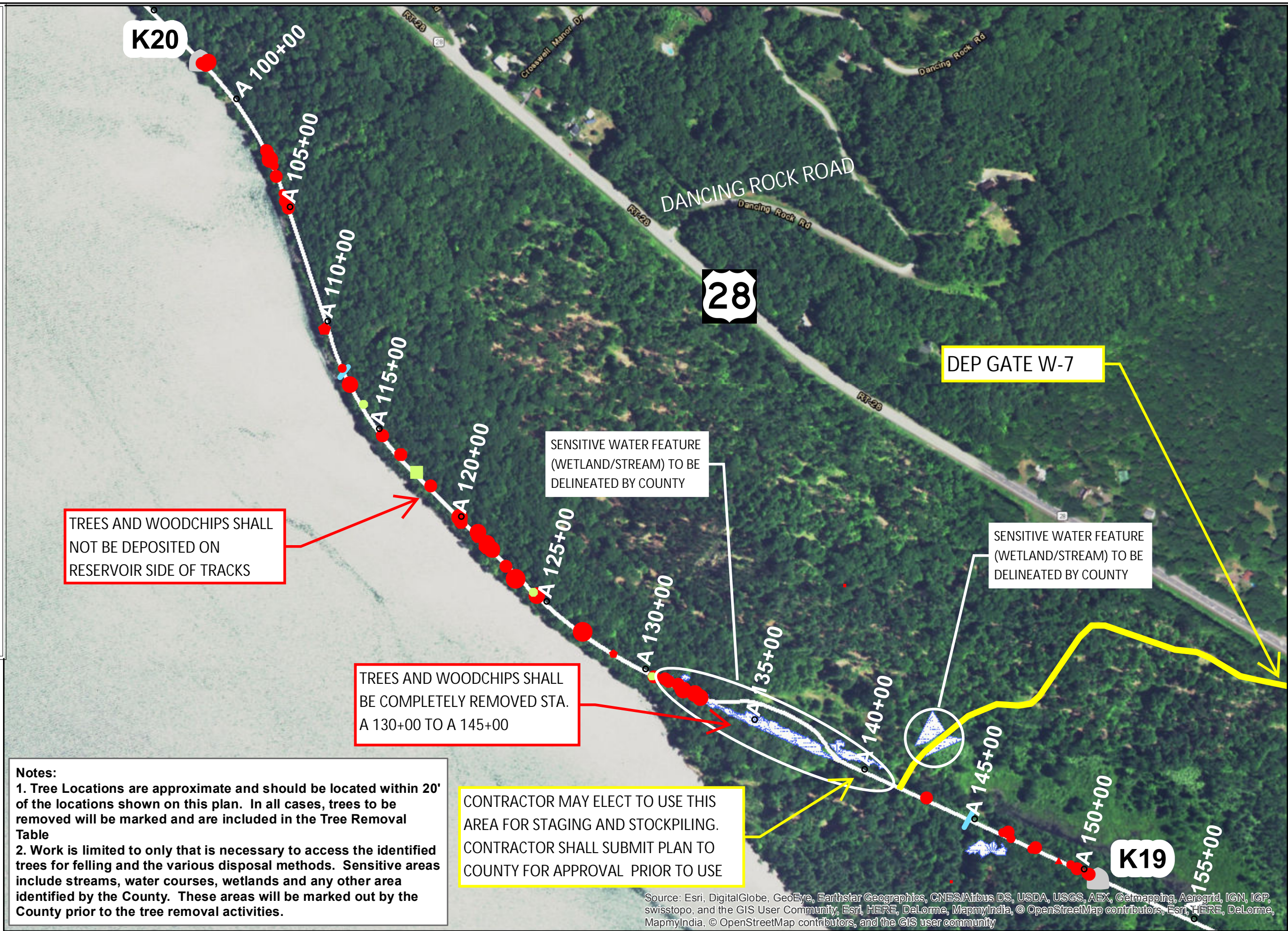


Legend

Trees K19_K20

Status, DBH_range, Species (Segment Quantity)

- alive, 4-8, Birch (2)
- alive, 4-8, Maple (1)
- alive, 4-8, Other (2)
- alive, 9-14, Maple (1)
- dead standing, 15-24, Ash (13)
- dead standing, 15-24, Other (2)
- dead standing, 25-34, Ash (2)
- dead standing, 4-8, Ash (17)
- ◆ dead standing, 4-8, Birch (1)
- ▲ dead standing, 4-8, Pine (1)
- dead standing, 9-14, Ash (32)
- ◆ dead standing, 9-14, Birch (3)
- dead standing, 9-14, Other (3)
- Milepost
- Access and Staging
- Streams
- Wetlands



Notes:
 1. Tree Locations are approximate and should be located within 20' of the locations shown on this plan. In all cases, trees to be removed will be marked and are included in the Tree Removal Table
 2. Work is limited to only that is necessary to access the identified trees for felling and the various disposal methods. Sensitive areas include streams, water courses, wetlands and any other area identified by the County. These areas will be marked out by the County prior to the tree removal activities.

CONTRACTOR MAY ELECT TO USE THIS AREA FOR STAGING AND STOCKPILING. CONTRACTOR SHALL SUBMIT PLAN TO COUNTY FOR APPROVAL PRIOR TO USE





Source: Esri, DigitalGlobe, GeoEye, Earthstar Geographics, CNES/Airbus DS, USDA, USGS, AEX, Getmapping, Aerogrid, IGN, IGP, swisstopo, and the GIS User Community, Esri, HERE, DeLorme, MapmyIndia, © OpenStreetMap contributors, Esri, HERE, DeLorme, MapmyIndia, © OpenStreetMap contributors, and the GIS user community

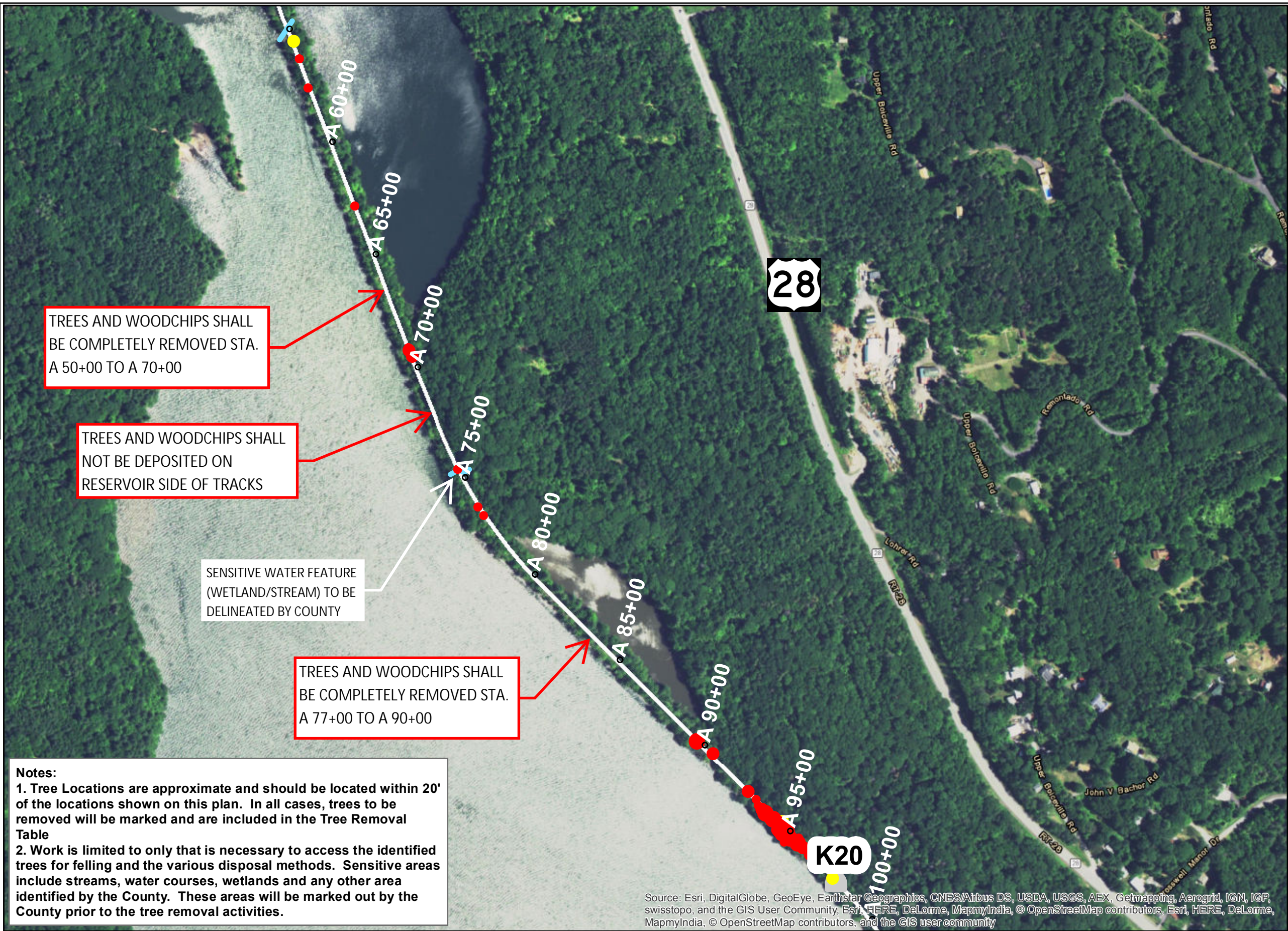


Legend

Trees K20_K21

Status, DBH_range, Species (Segment Quantity)

- dead standing, 15-24, Ash (11)
- dead standing, 4-8, Ash (24)
- dead standing, 9-14, Ash (25)
- dead standing, 9-14, Other (1)
- stressed, 9-14, Ash (2)
- stressed, 9-14, Other (1)
-  Milepost
-  Access and Staging
-  Streams
-  Wetlands



Notes:
 1. Tree Locations are approximate and should be located within 20' of the locations shown on this plan. In all cases, trees to be removed will be marked and are included in the Tree Removal Table
 2. Work is limited to only that is necessary to access the identified trees for felling and the various disposal methods. Sensitive areas include streams, water courses, wetlands and any other area identified by the County. These areas will be marked out by the County prior to the tree removal activities.

Source: Esri, DigitalGlobe, GeoEye, Earthstar Geographics, CNES/Airbus DS, USDA, USGS, AEX, Getmapping, Aerogrid, IGN, IGP, swisstopo, and the GIS User Community, Esri, HERE, DeLorme, MapmyIndia, © OpenStreetMap contributors, Esri, HERE, DeLorme, MapmyIndia, © OpenStreetMap contributors, and the GIS user community



Legend

Trees K20_K21

Status, DBH_range, Species (Segment Quantity)

- alive, 9-14, Ash (2)

Trees K21_K21.5

Status, DBH_range, Species (Segment Quantity)

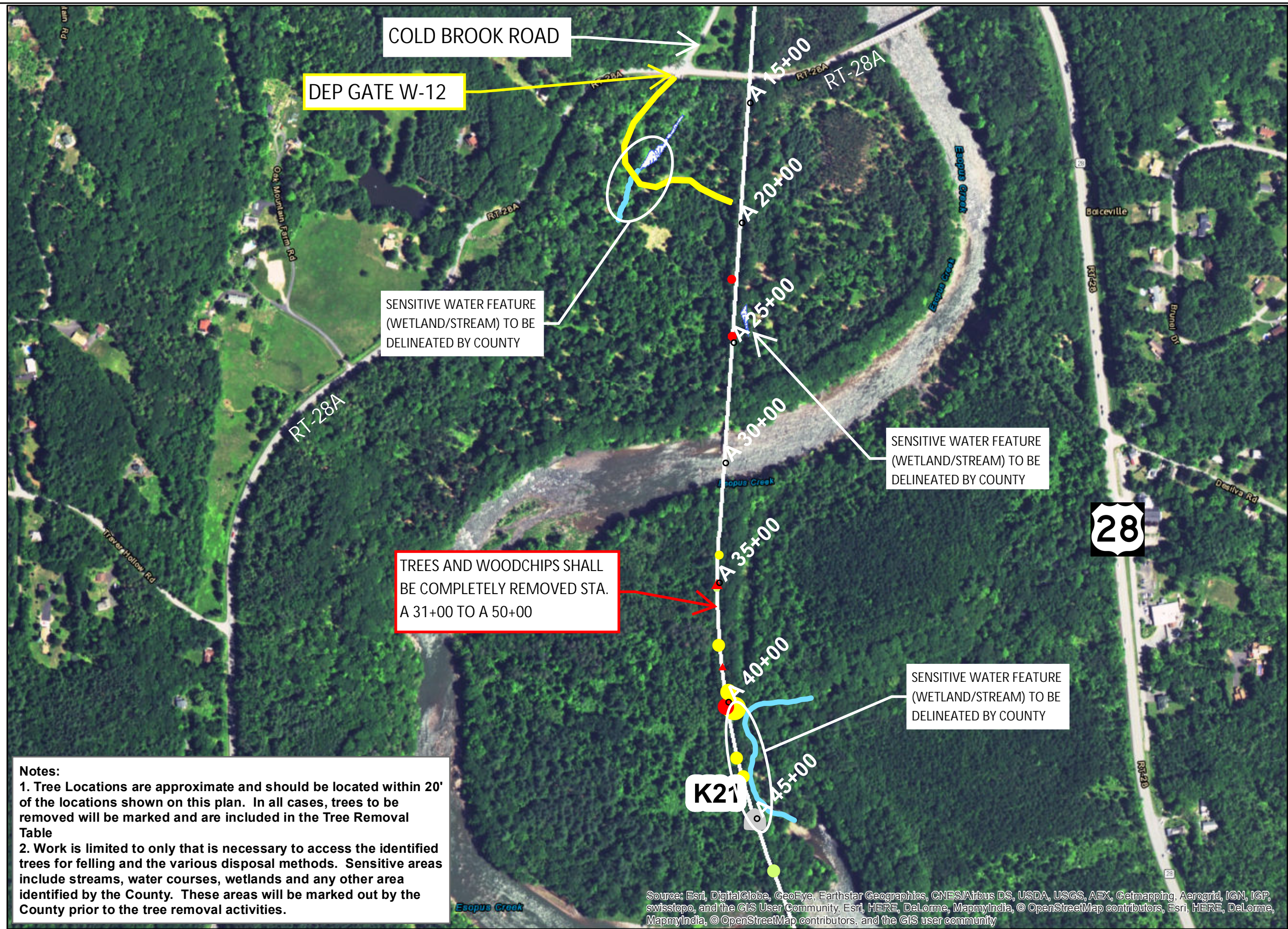
- alive, 4-8, Birch (1)
- dead standing, 15-24, Ash (1)
- dead standing, 4-8, Ash (1)
- dead standing, 4-8, Other (1)
- ▲ dead standing, 4-8, Pine (2)
- ▲ dead standing, 9-14, Pine (1)
- stressed, 15-24, Ash (1)
- stressed, 35-44, Ash (1)
- stressed, 4-8, Ash (1)
- stressed, 9-14, Ash (4)

● Milepost

— Access and Staging

— Streams

— Wetlands

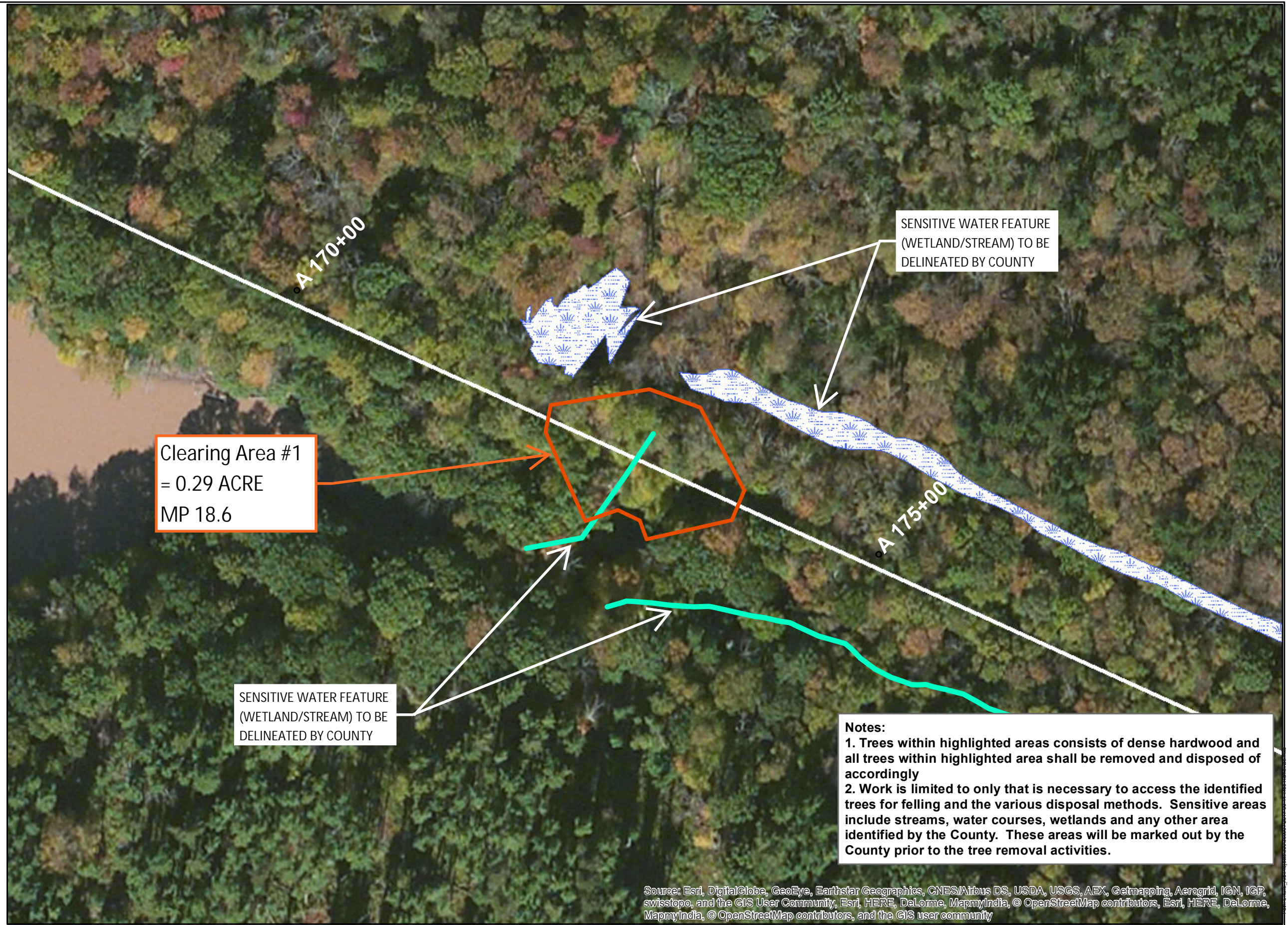


Notes:
 1. Tree Locations are approximate and should be located within 20' of the locations shown on this plan. In all cases, trees to be removed will be marked and are included in the Tree Removal Table
 2. Work is limited to only that is necessary to access the identified trees for felling and the various disposal methods. Sensitive areas include streams, water courses, wetlands and any other area identified by the County. These areas will be marked out by the County prior to the tree removal activities.

Source: Esri, DigitalGlobe, GeoEye, Earthstar Geographics, CNES/Airbus DS, USDA, USGS, AEX, Getmapping, Aerogrid, IGN, IGP, swisstopo, and the GIS User Community, Esri, HERE, DeLorme, MapmyIndia, © OpenStreetMap contributors, Esri, HERE, DeLorme, MapmyIndia, © OpenStreetMap contributors, and the GIS user community

Legend

-  Clearing Areas (1)
-  Milepost
-  Access and Staging
-  Streams
-  Wetlands



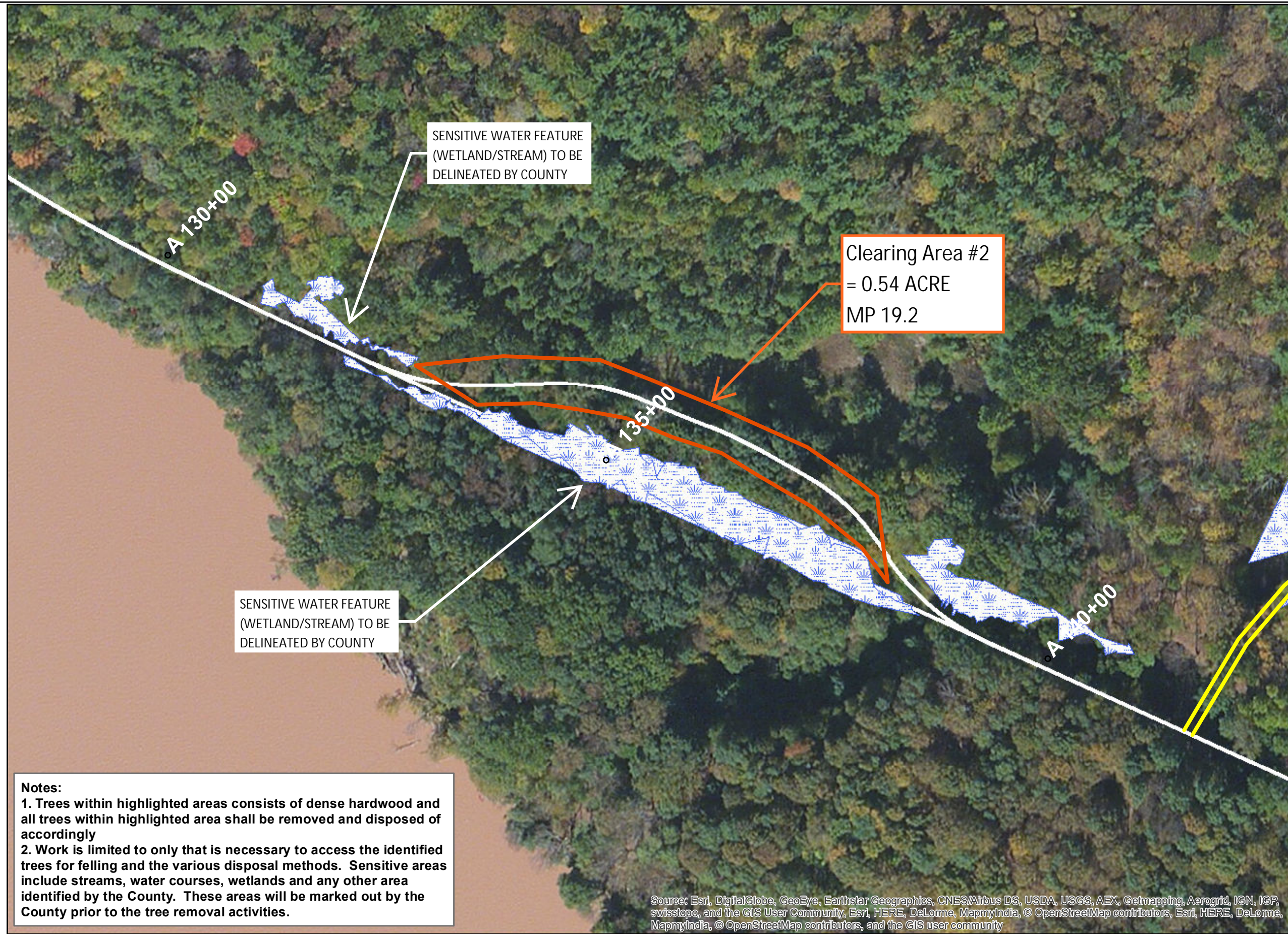
Source: Esri, DigitalGlobe, GeoEye, Earthstar Geographics, CNES/Airbus DS, USDA, USGS, AEX, Getmapping, Aerogrid, IGN, IGP, swisstopo, and the GIS User Community, Esri, HERE, DeLorme, MapmyIndia, © OpenStreetMap contributors, Esri, HERE, DeLorme, MapmyIndia, © OpenStreetMap contributors, and the GIS user community



1 inch = 75 feet

Legend

-  Clearing Areas (1)
-  Milepost
-  Access and Staging
-  Streams
-  Wetlands



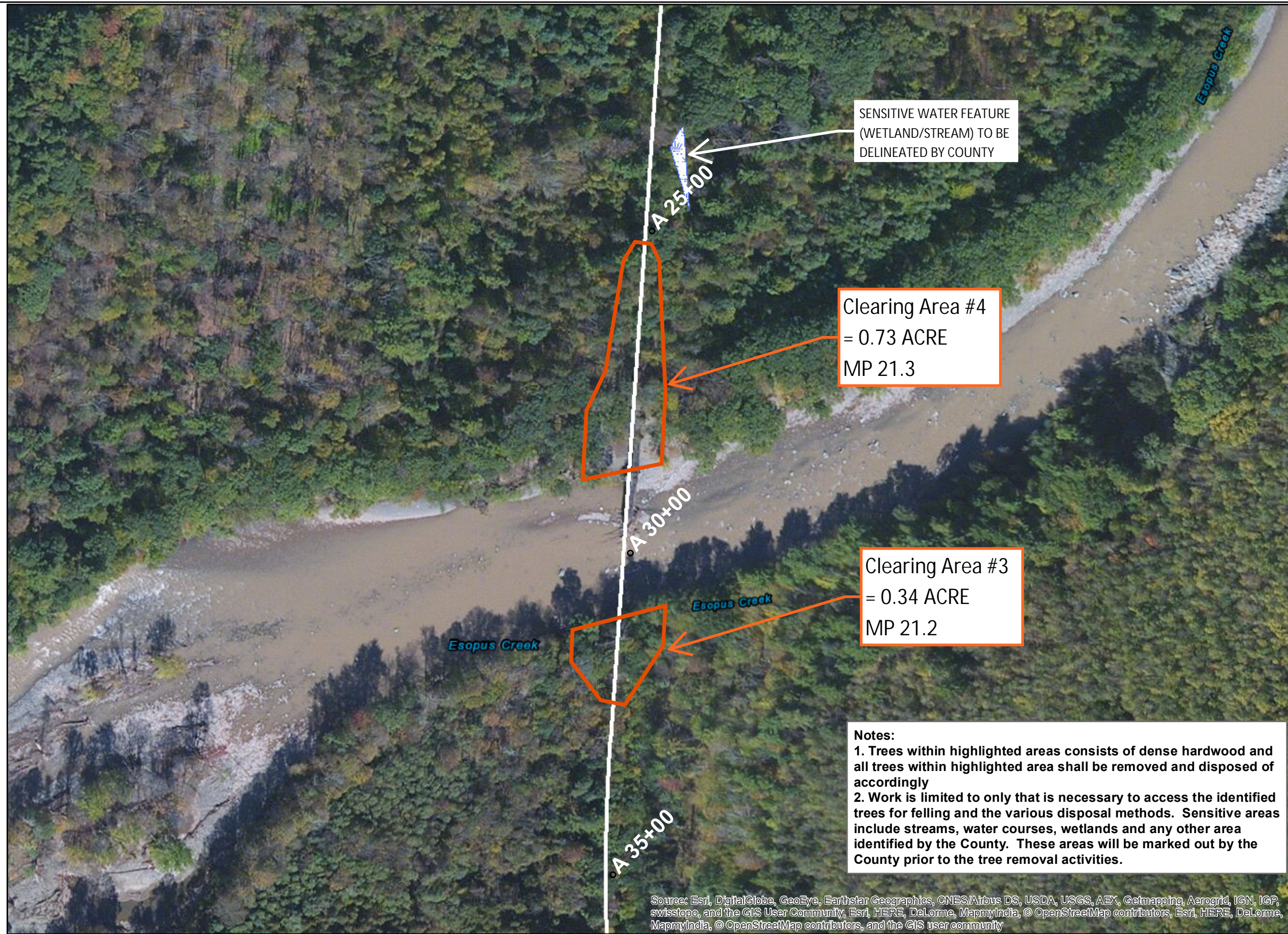
Notes:
 1. Trees within highlighted areas consists of dense hardwood and all trees within highlighted area shall be removed and disposed of accordingly
 2. Work is limited to only that is necessary to access the identified trees for felling and the various disposal methods. Sensitive areas include streams, water courses, wetlands and any other area identified by the County. These areas will be marked out by the County prior to the tree removal activities.

Source: Esri, DigitalGlobe, GeoEye, Earthstar Geographics, CNES/Airbus DS, USDA, USGS, AEX, Getmapping, Aerogrid, IGN, IGP, swisstopo, and the GIS User Community, Esri, HERE, DeLorme, MapmyIndia, © OpenStreetMap contributors, Esri, HERE, DeLorme, MapmyIndia, © OpenStreetMap contributors, and the GIS user community



Legend

-  Clearing Areas (2)
-  Milepost
-  Access and Staging
-  Streams
-  Wetlands



SENSITIVE WATER FEATURE (WETLAND/STREAM) TO BE DELINEATED BY COUNTY

Clearing Area #4
= 0.73 ACRE
MP 21.3

Clearing Area #3
= 0.34 ACRE
MP 21.2

Notes:
 1. Trees within highlighted areas consists of dense hardwood and all trees within highlighted area shall be removed and disposed of accordingly
 2. Work is limited to only that is necessary to access the identified trees for felling and the various disposal methods. Sensitive areas include streams, water courses, wetlands and any other area identified by the County. These areas will be marked out by the County prior to the tree removal activities.

Source: Esri, DigitalGlobe, GeoEye, Earthstar Geographics, CNES/Airbus DS, USDA, USGS, AEX, Getmapping, Aerogrid, IGN, IGP, swisstopo, and the GIS User Community, Esri, HERE, DeLorme, MapmyIndia, © OpenStreetMap contributors, Esri, HERE, DeLorme, MapmyIndia, © OpenStreetMap contributors, and the GIS user community

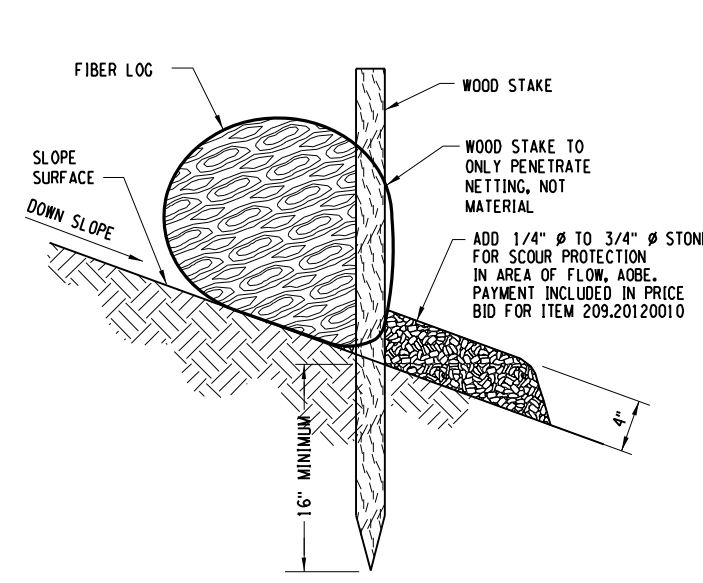


L:\MicroStation\Bentley_V8\WorkSpace\Plot\SITE_NYSOOT_SIZE_B.TBL
L:\MicroStation\WorkSpace\Plot\NYSOOT_NYSOOT.L15000.B.04.00.plt

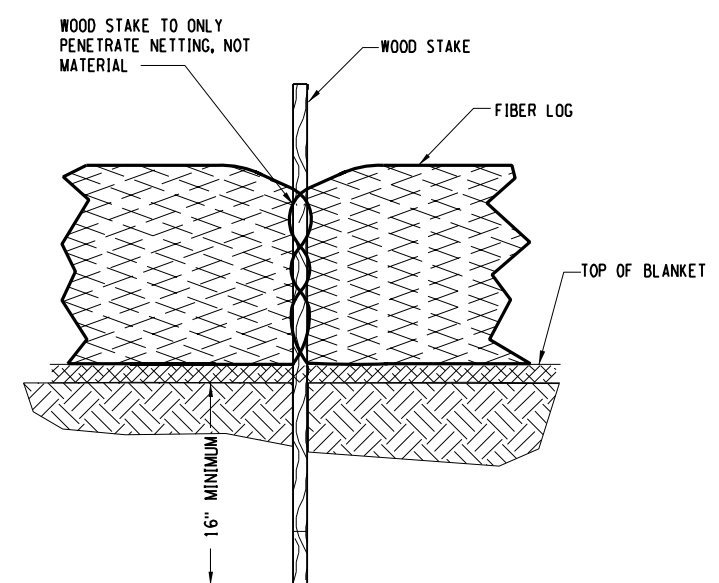
FILE NAME = L:\MSTN\Projects\0300\369.007 - Ashoken Rail Trail\MSTN\Deconstruction Plans\017_369007001.ESCD 01.dgn
DATE = 9/13/2017
TIME = 6:08:32 PM

DESIGNED BY
CHECKED BY
DRAFTED BY
CHECKED BY

PREPARED BY: BARTON & LOGUIDICE, D.P.C.
ON:
**DRAFT
NOT FOR CONSTRUCTION**



FIBER LOG STAKE DETAIL (ON BARE SOIL)
N.T.S.



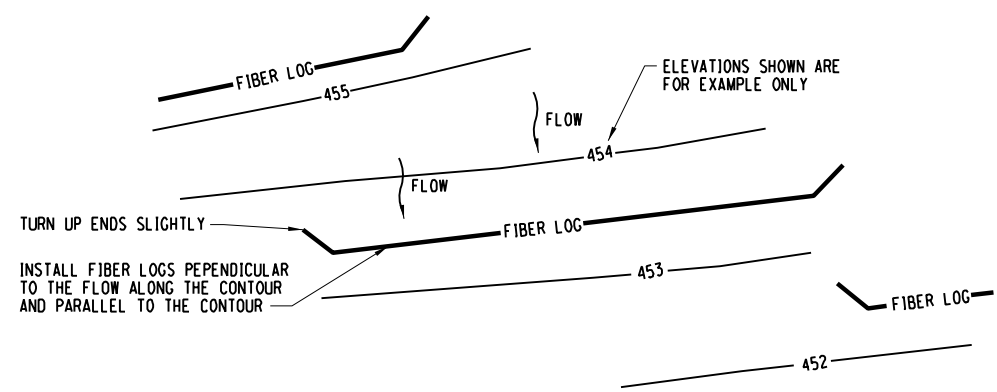
FIBER LOG STAKE DETAIL (FRONT VIEW)
N.T.S.

FIBER LOG CHECK DAM APPLICATION NOTES:

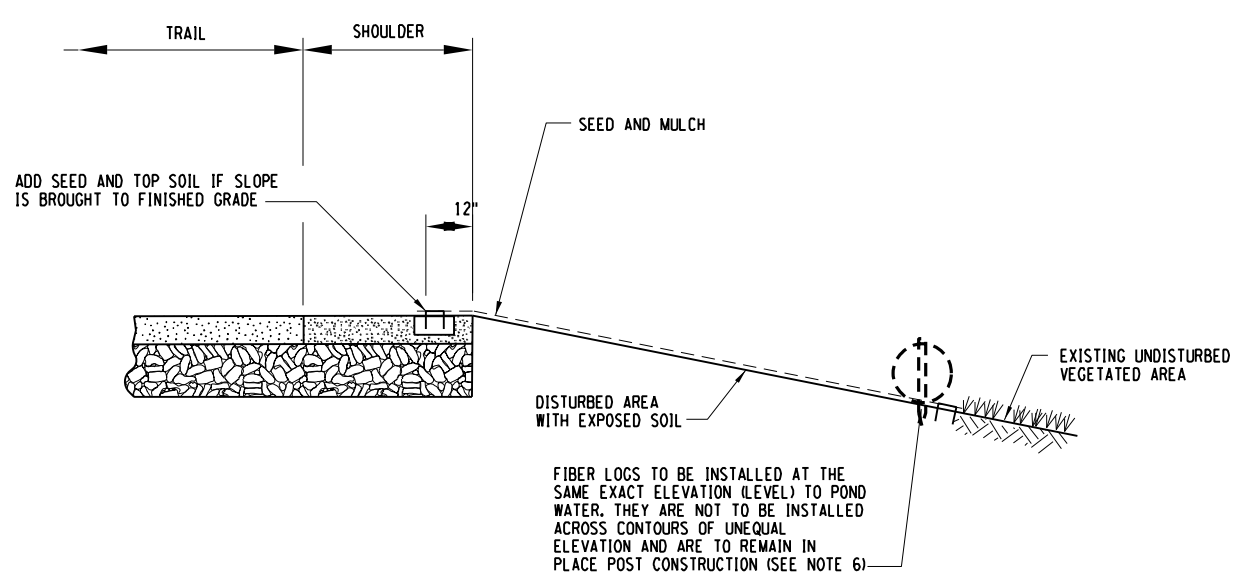
- A. THE PRIMARY PURPOSE OF A CHECK DAM IS TO REDUCE EROSION IN A CHANNEL BY REDUCING FLOW VELOCITY IN THE CHANNEL.
- B. CHECK DAMS WILL CAPTURE SEDIMENT THAT FALLS OUT OF SUSPENSION BEHIND THE CHECK DAM DUE TO DECREASED VELOCITY.
- C. CHECK DAMS ARE NOT INTENDED TO, AND WILL NOT FILTER SEDIMENT FROM TURBID WATER.

NOTES:

1. DRAINAGE AREAS: MAXIMUM DRAINAGE AREA TRIBUTARY TO FIBER LOG CHECK DAM SHALL BE 1 ACRE. MAXIMUM DRAINAGE AREA TRIBUTARY TO PREFABRICATED CHECK DAM SHALL BE 1/2 ACRE.
2. POSTS MAY BE 1/4" x 1/4" (MIN.) HARDWOOD, 1/2" x 3/2" (MIN.) SOFTWOOD. ADDITIONAL POSTS ARE REQUIRED AT THE OUTER EDGES OF DITCH WIDTH.
3. THE FIBER LOG SHALL BE INSTALLED WITH THE POSTS ON THE DOWNSTREAM SIDE OF THE FABRIC AS SHOWN.
4. SEDIMENT SHALL BE REMOVED WHEN ACCUMULATION REACHES ONE-HALF OF THE MEASURE HEIGHT OF THE FIBER LOG. SEDIMENT SHALL BE DISPOSED OF AS UNSUITABLE MATERIAL.



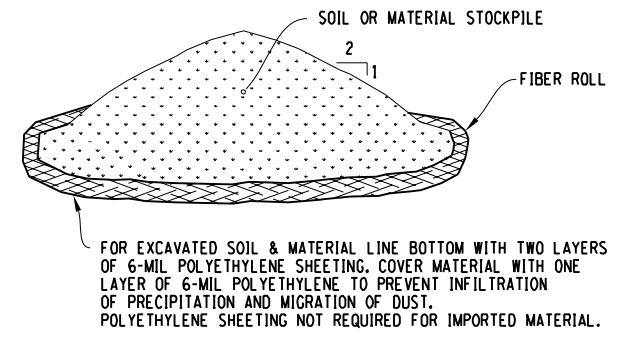
FIBER LOG PLAN EXAMPLE
N.T.S.



**EROSION AND SEDIMENT CONTROL FOR ALL DISTURBED AREAS
TEMPORARY OR PERMANENT**
N.T.S.

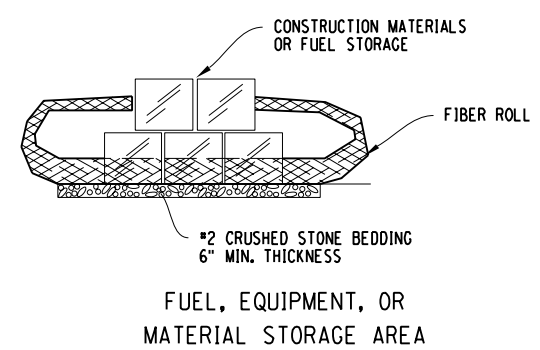
NOTES:

1. ITEMS IN THIS DETAIL MAY APPEAR EXAGGERATED TO SHOW DETAIL.
2. IF SLOPE IS BROUGHT TO FINISHED GRADE, PERMANENT TOP SOIL AND SEEDING SHALL BE INSTALLED PRIOR TO INSTALLING ITEM 209.2103 - SOIL STABILIZERS, CLASS IV TYPE C. IF SLOPES ARE NOT BROUGHT TO FINISH GRADE THEY ARE TO BE TREATED WITH ITEM 209.1003 - TEMPORARY SEED AND MULCH.
3. AS PART OF FINAL STABILIZATION, WOODEN STAKES TO BE REMOVED AND FIBER LOG MULCH NETTING CUT OPEN ALONG ENTIRE LENGTH.
4. USE STRAW MULCH FOR EROSION PREVENTION



**EXCAVATED AND IMPORTED
SOIL AND MATERIAL STOCKPILE**
N.T.S.

1. AREA CHOSEN FOR STOCKPILING OPERATIONS SHALL BE DRY AND STABLE. THE AREA SHALL NOT BE WITHIN THE DRIPLINE OR CANOPY OF EXISTING TREES. THE LOCATION SHALL BE AS NOTED ON THE DRAWINGS. DREGGED OR EXCAVATED MATERIALS SHALL BE PLACED UPON SILT FENCE FABRIC.
2. MAXIMUM SLOPE OF STOCKPILE SHALL BE 2(H) TO 1(V).
3. FIBER LOGS SHALL BE PLACED FIVE (5)-FEET DOWNSLOPE OF EACH PILE. UPON COMPLETION OF SOIL STOCKPILING, TOPSOIL SHALL BE STABILIZED WITH TEMPORARY SEED AND MULCH IF NOT TO BE DISTURBED/UTILIZED WITHIN FOURTEEN (14) DAYS.



**FUEL, EQUIPMENT, OR
MATERIAL STORAGE AREA**
N.T.S.

1. AREA CHOSEN FOR STORAGE OPERATIONS SHALL BE DRY AND STABLE. THE AREA SHALL NOT BE WITHIN THE DRIPLINE OR CANOPY OF TREES. THE LOCATION SHALL BE AS NOTED ON THE DRAWINGS.
2. NO STOCKPILE AREA SHALL BE LOCATED WITHIN FIFTY (50) FEET OF SURFACE WATER, FLOODPLAIN, SLOPE, DRAINAGE FACILITY OR ROADWAY.
3. IF STABLE SURFACE NOT AVAILABLE, THE TOP SIX (6) INCHES OF NATIVE MATERIAL SHALL BE EXCAVATED FROM THE MATERIAL/FUEL STORAGE AREA AND STOCKPILED TO REUSE FOR RESTORATION OF THIS AREA. IN THE AREA EXCAVATED, PLACE SEPARATION FABRIC AND SIX (6) INCHES OF #2 CRUSHED STONE BEDDING, SEE SPECIFICATIONS. IF APPROVED BY THE ENGINEER, USE OF EXISTING GRAVEL AREAS MAY BE USED IN LIEU OF EXCAVATION, STONE, AND FABRIC.
4. FIBER LOGS SHALL BE PLACED FIVE (5) FEET DOWN SLOPE OF STORAGE AREA.
5. REMOVE ALL MATERIALS INCLUDING STONE AND FABRIC WHEN NEED FOR STORAGE IS OVER. RESTORE TO ORIGINAL GRADE WITH STOCKPILED EXCAVATED SOIL (NO FOREIGN DEBRIS).

CONSTRUCTION STOCKPILE/STORAGE AREA DETAIL
N.T.S.



Barton & Loguidice, D.P.C.
UNAUTHORIZED ALTERATION OR ADDITION TO THIS DRAWING IS A VIOLATION OF THE NEW YORK STATE EDUCATION LAW ARTICLE 145 SECTION 7209

ASHOKAN RAIL TRAIL
ULSTER COUNTY

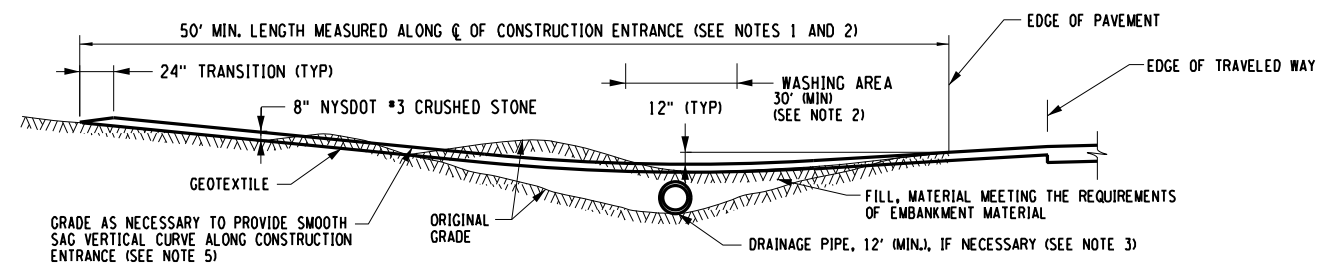
EROSION AND SEDIMENT CONTROL DETAILS - 1
SCALE: AS SHOWN
DATE ISSUED: 5/2017
DRAWING ESCD-1

XX

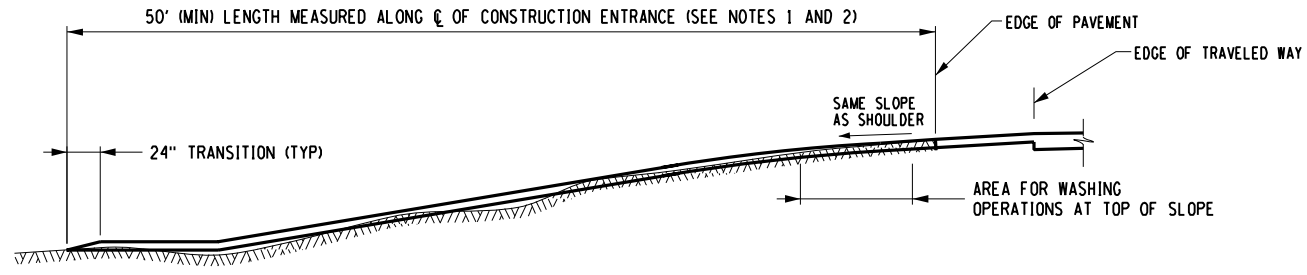
| NO. | DATE | BY | REVISION |
|-----|------|----|----------|
| | | | |
| | | | |
| | | | |

FILE NAME = L:\MSTN\Projects\0300\369\007 - Ashokan Rail Trail\MSTN\Deconstruction Plans\019_369\007\001.ESCD_02.dgn
 DATE = 9/13/2017
 TIME = 6:08:58 PM

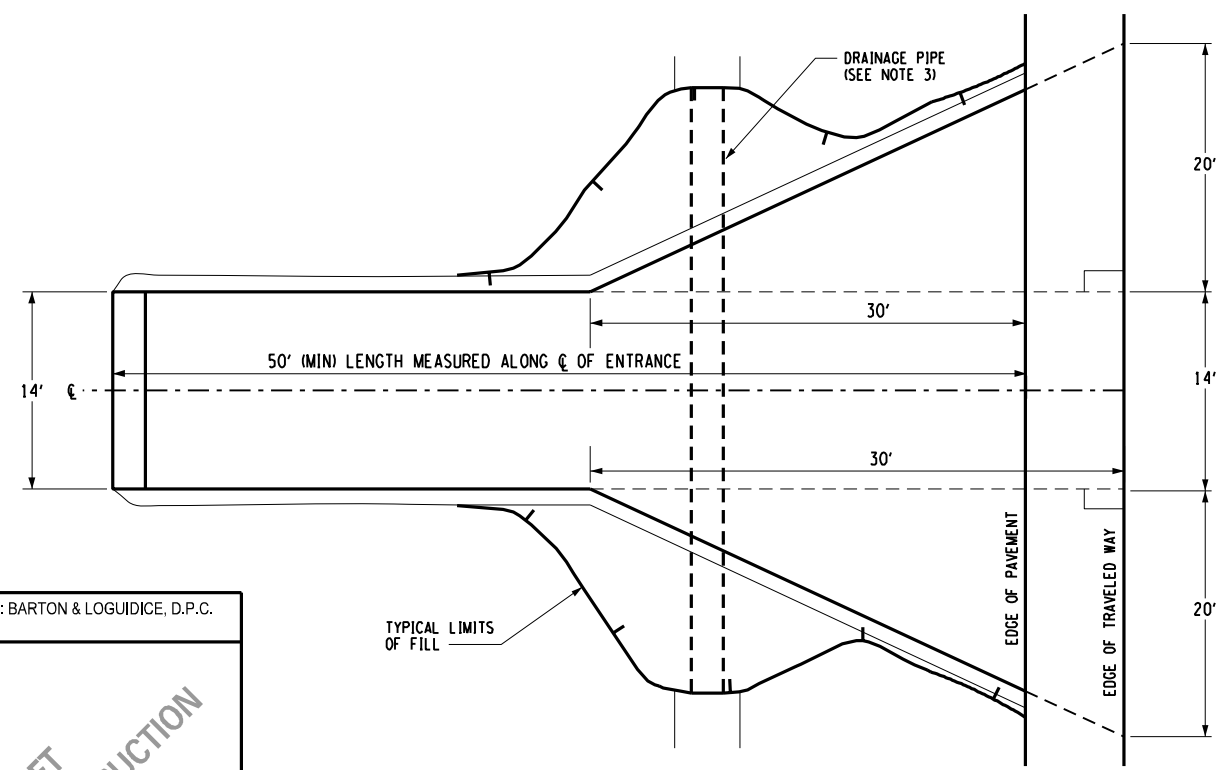
IN CHARGE OF _____
 DESIGNED BY _____
 CHECKED BY _____
 DRAFTED BY _____
 CHECKED BY _____



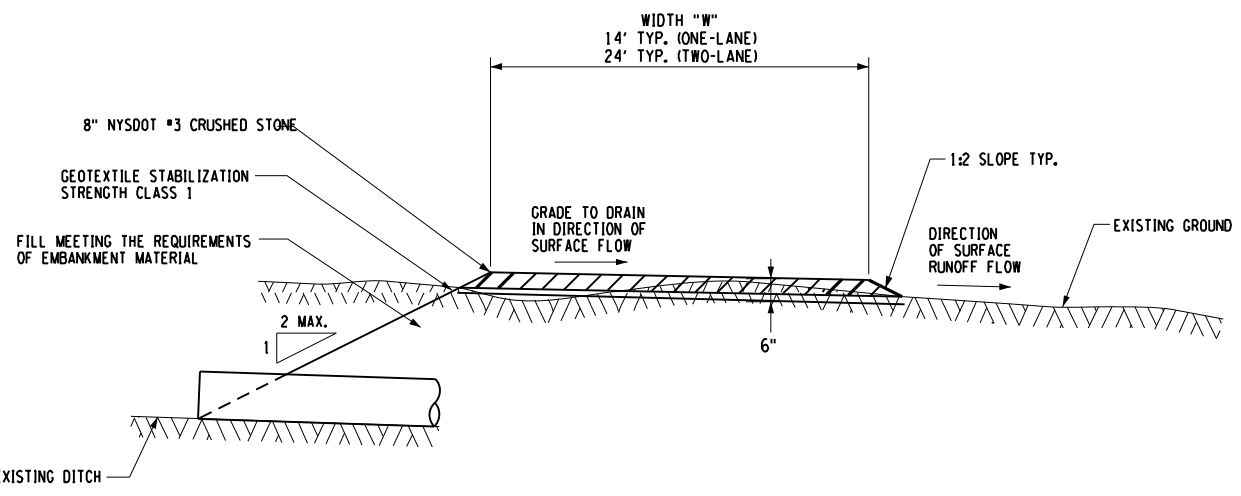
TYPICAL CONSTRUCTION ENTRANCE PROFILE
(CUT AND DITCH SECTIONS)



TYPICAL CONSTRUCTION ENTRANCE PROFILE
(FILL SECTIONS)



TYPICAL CONSTRUCTION ENTRANCE PLAN
(CUT/DITCH AND FILL SECTIONS)



TYPICAL CONSTRUCTION ENTRANCE SECTION

CONSTRUCTION ENTRANCES:



APPLICATION NOTES:

A. THE PURPOSE OF A STABILIZED CONSTRUCTION ENTRANCE IS TO REDUCE OR ELIMINATE THE TRACKING OF SEDIMENT ONTO PUBLIC RIGHTS OF WAY OR STREETS.

NOTES:

1. MODIFICATIONS MAY BE REQUIRED TO MATCH FIELD CONDITIONS.
2. A 30' WASH AREA SHALL BE PROVIDED. ADDITIONAL GRADING MAY BE REQUIRED TO PROVIDE WASHING AREAS.
3. PROPOSED DRAINAGE PIPES SHALL BE SIZED WITH SUFFICIENT CAPACITY TO CARRY DITCH FLOWS. ALTERNATE WAYS OF TRANSPORTING DITCH DRAINAGE ACROSS CONSTRUCTION ENTRANCES MAY BE PROPOSED BY THE CONTRACTOR FOR APPROVAL BY THE ENGINEER.
4. THE CONTRACTOR SHALL GRADE TO PREPARE AND SMOOTH ORIGINAL GROUND FOR PLACEMENT OF 8" OF #3 CRUSHED STONE ENTRANCE MATERIAL UP TO THE EDGE OF PAVEMENT.
5. ALL WORK TO CONSTRUCT THE STABILIZED ENTRANCE, INCLUDING GRADING, DRAINAGE PIPE, EXCAVATION, FILL, GEOTEXTILE AND CRUSHED STONE OR GRAVEL SHALL BE INCLUDED IN THE UNIT PRICE BID.
6. 100% CRUSHED STONE MEETING THE NYS DOT #3 STONE GRADATION SHALL BE UTILIZED FOR CONSTRUCTION ENTRANCES

PREPARED BY: BARTON & LOGUIDICE, D.P.C.
 ON:
DRAFT
NOT FOR CONSTRUCTION

| | |
|---|------------------|
| XX | |
| NO. | DATE BY REVISION |
| | |
|  | |
|  | |
| <small>UNAUTHORIZED ALTERATION OR ADDITION TO THIS DRAWING IS A VIOLATION OF THE NEW YORK STATE EDUCATION LAW, ARTICLE 145 SECTION 7209</small> | |
| ASHOKAN RAIL TRAIL | ULSTER COUNTY |
| EROSION AND SEDIMENT CONTROL DETAILS - 2 | |
| SCALE: NONE | |
| DATE ISSUED: 3/2017 | |
| DRAWING ESCD-2 | |