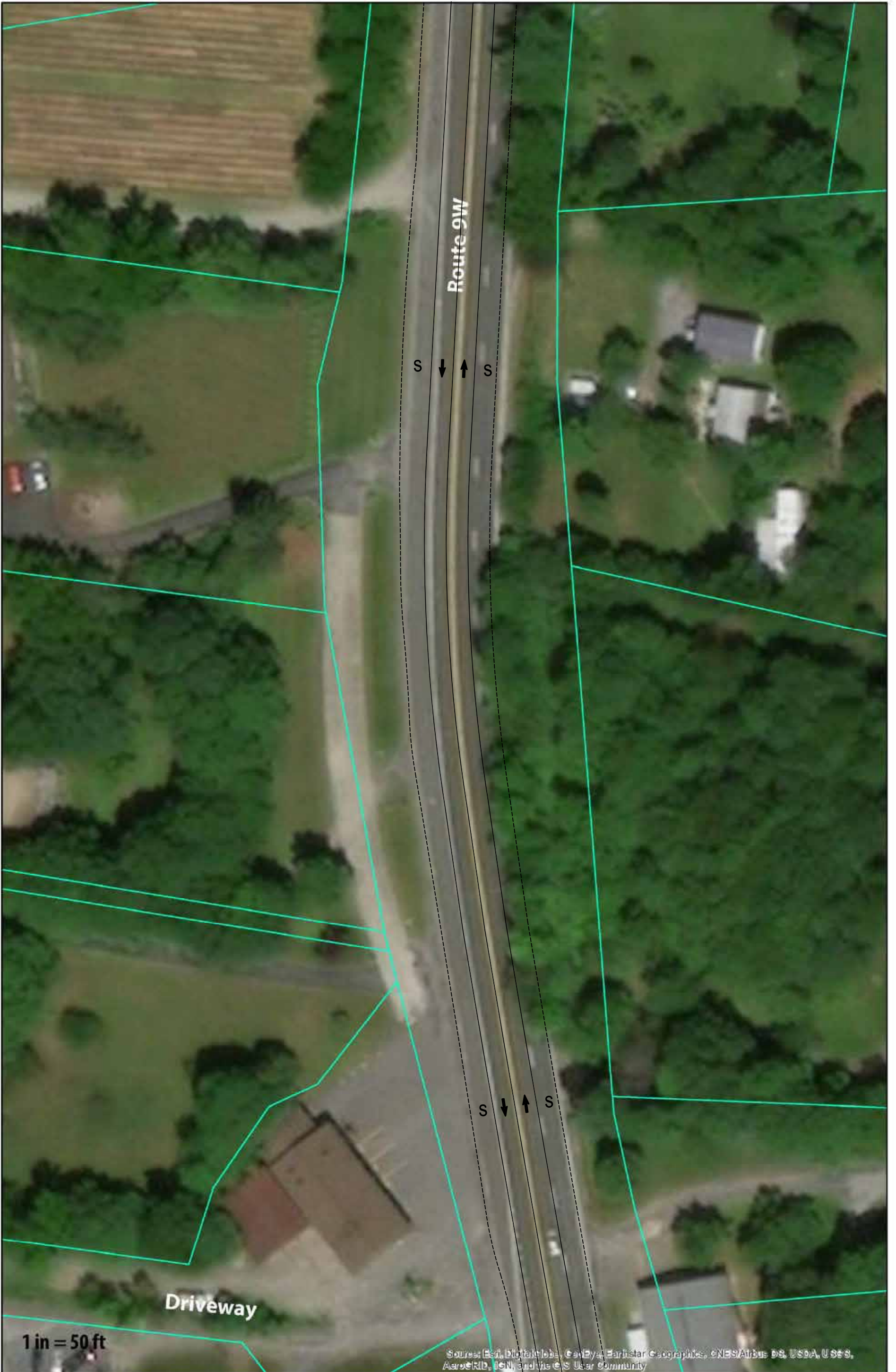


Map 1: Rivercrest Lane/Lyons Lane
Route 9W Potential Lane Reconfiguration Concept



Source: Esri, DigitalGlobe, GeoEye, Earthstar Geographics, CNES/Airbus DS, USDA, USGS, AeroGRID, IGN, and the GIS User Community



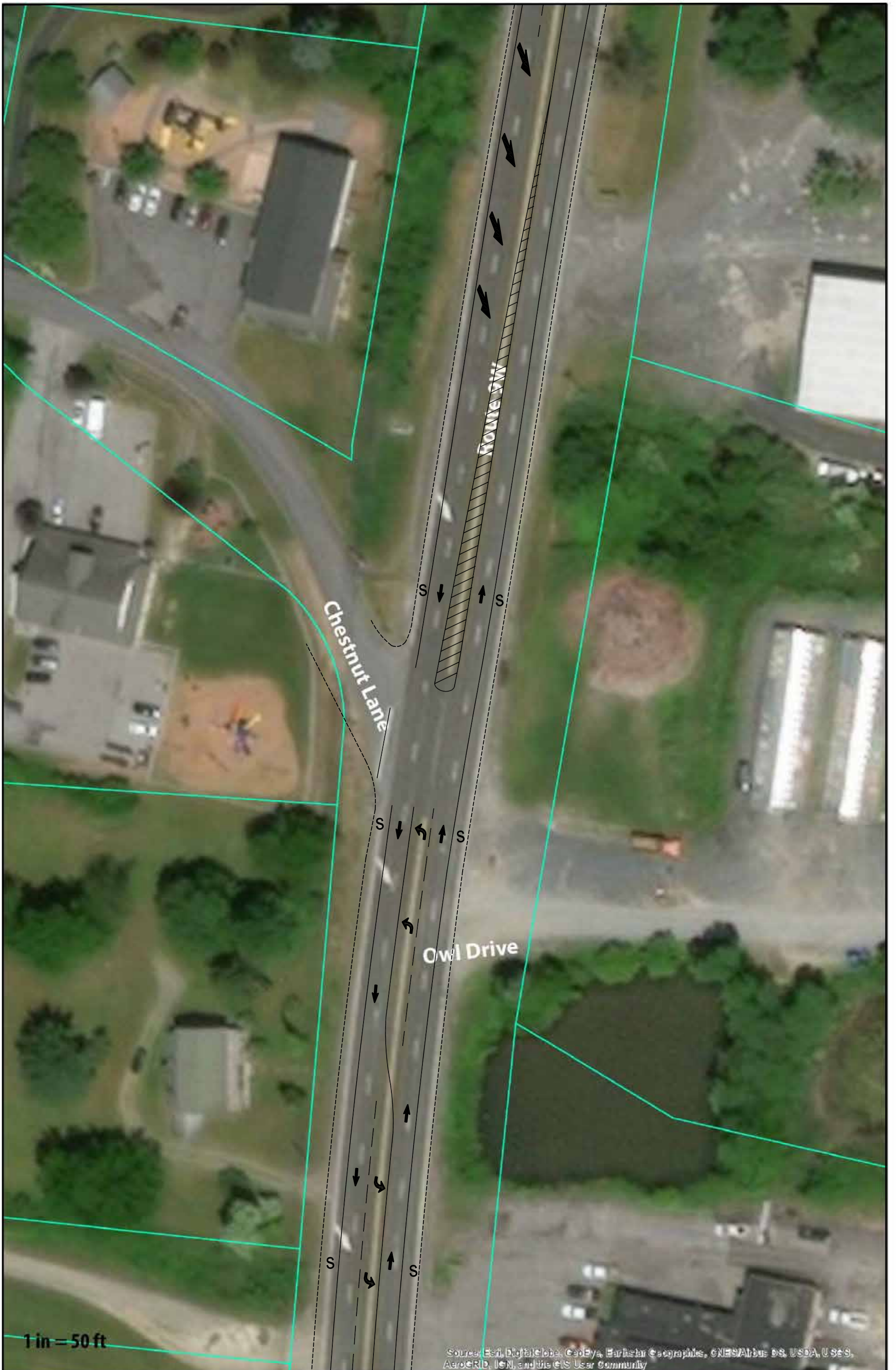
Map 2: Driveways
Route 9W Potential Lane Reconfiguration Concept





**Map 3: Rivercrest Lane/Lyons Lane
Route 9W Potential Lane Reconfiguration Concept**

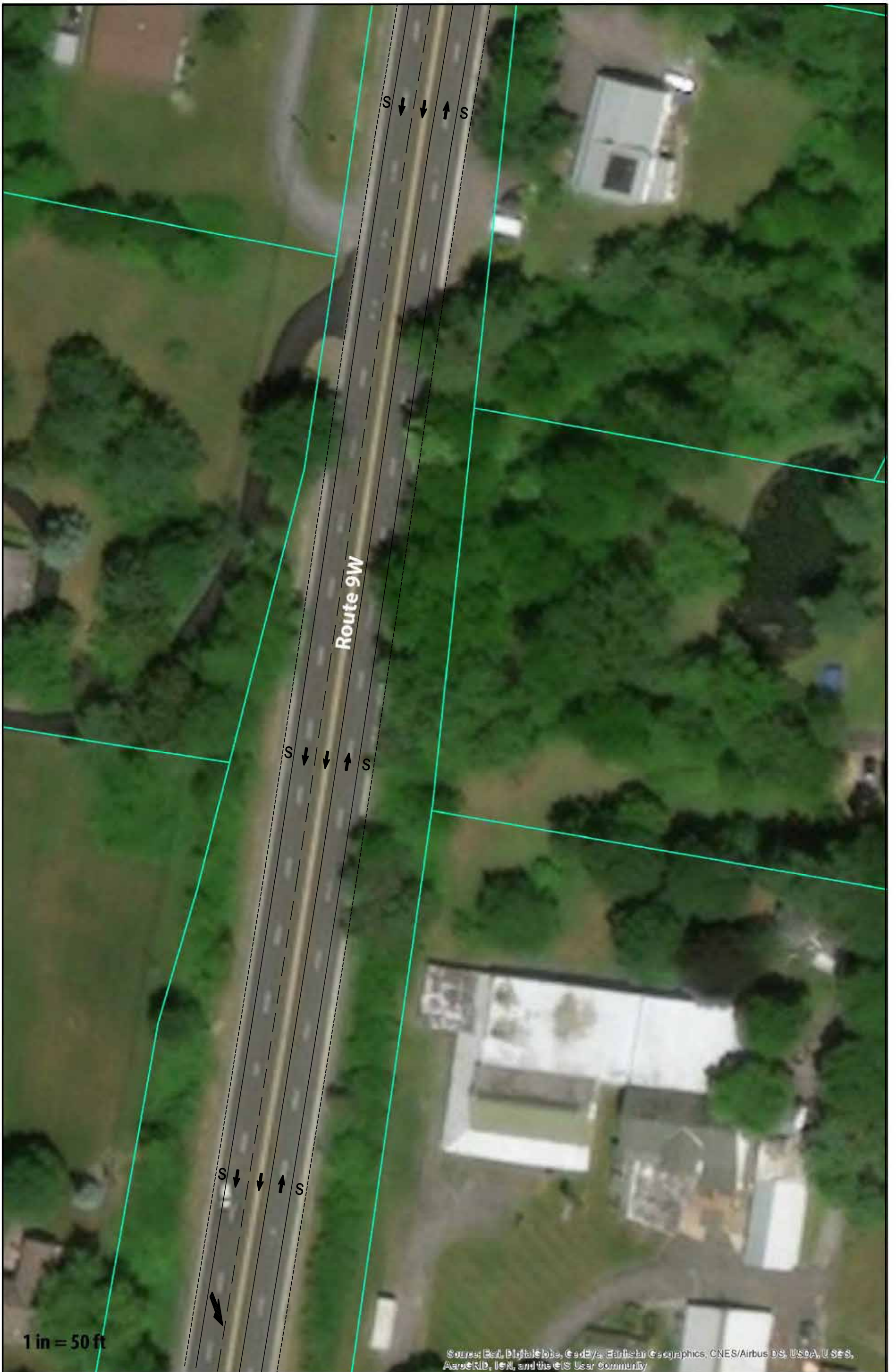




**Map 4: Chestnut Lane/Owl Drive
Route 9W Potential Lane Reconfiguration Concept**



Source: Esri, DigitalGlobe, GeoEye, Earthstar Geographics, CNES/Airbus DS, USDA, USGS, AeroGRID, IGN, and the GIS User Community



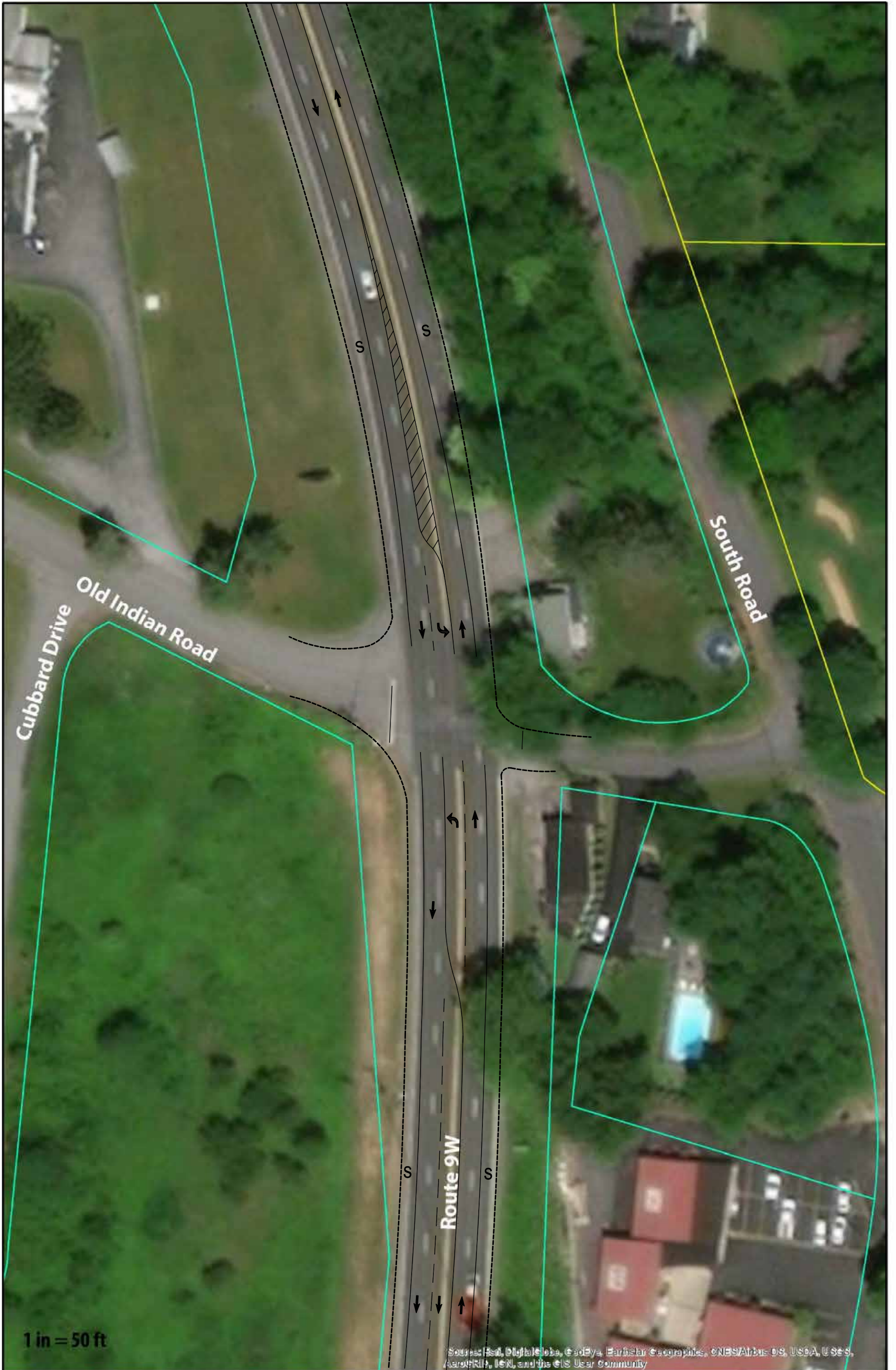
Map 5:
Route 9W Potential Lane Reconfiguration Concept





Map 6: South Road (S)
Route 9W Potential Lane Reconfiguration Concept





Map 7: Old Indian Road
Route 9W Potential Lane Reconfiguration Concept





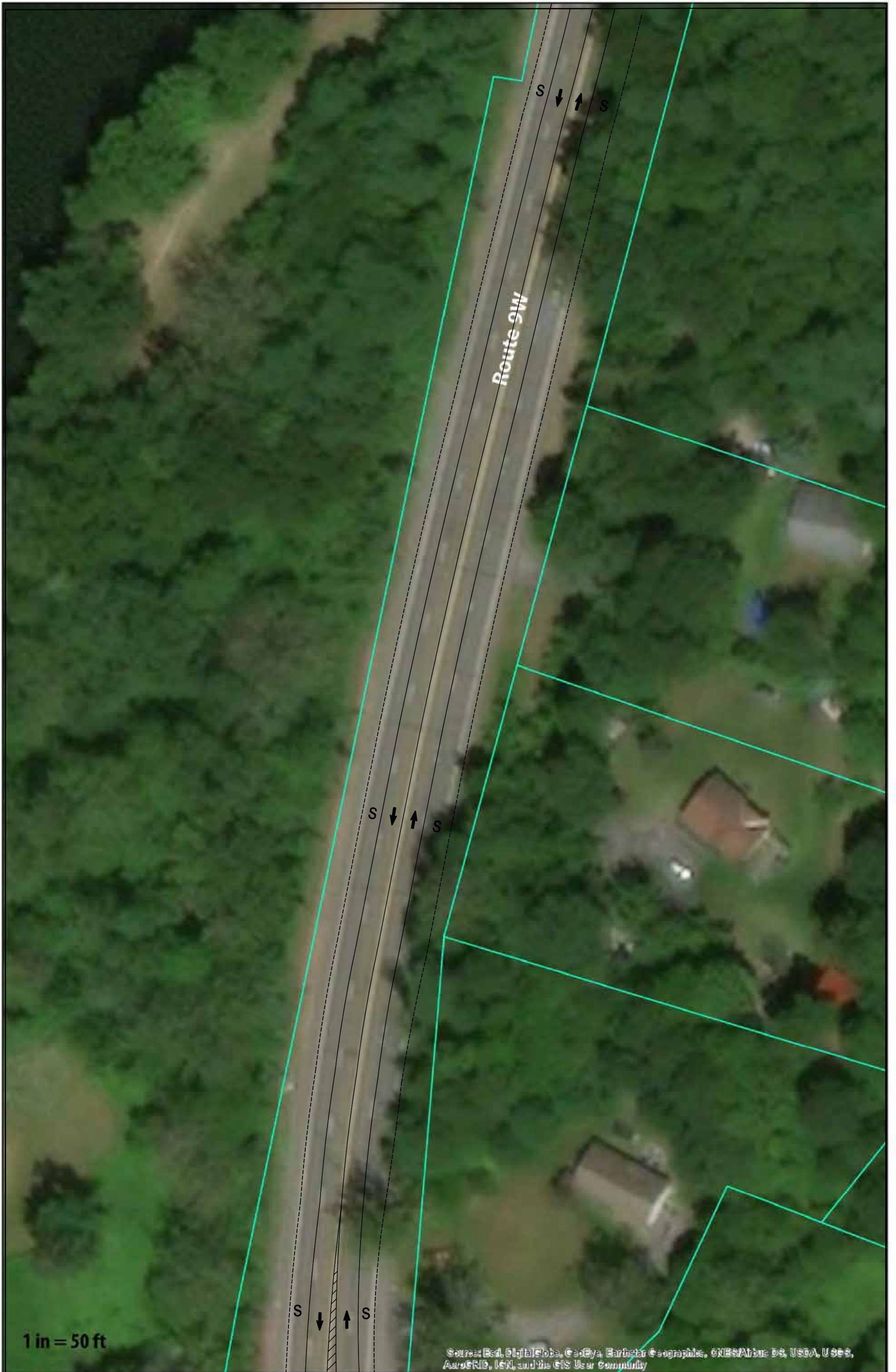
Map 8:
Route 9W Potential Lane Reconfiguration Concept





Map 9: Willow Tree Road
Route 9W Potential Lane Reconfiguration Concept





Map 10: Cluett Schantz Park (S)
Route 9W Potential Lane Reconfiguration Concept





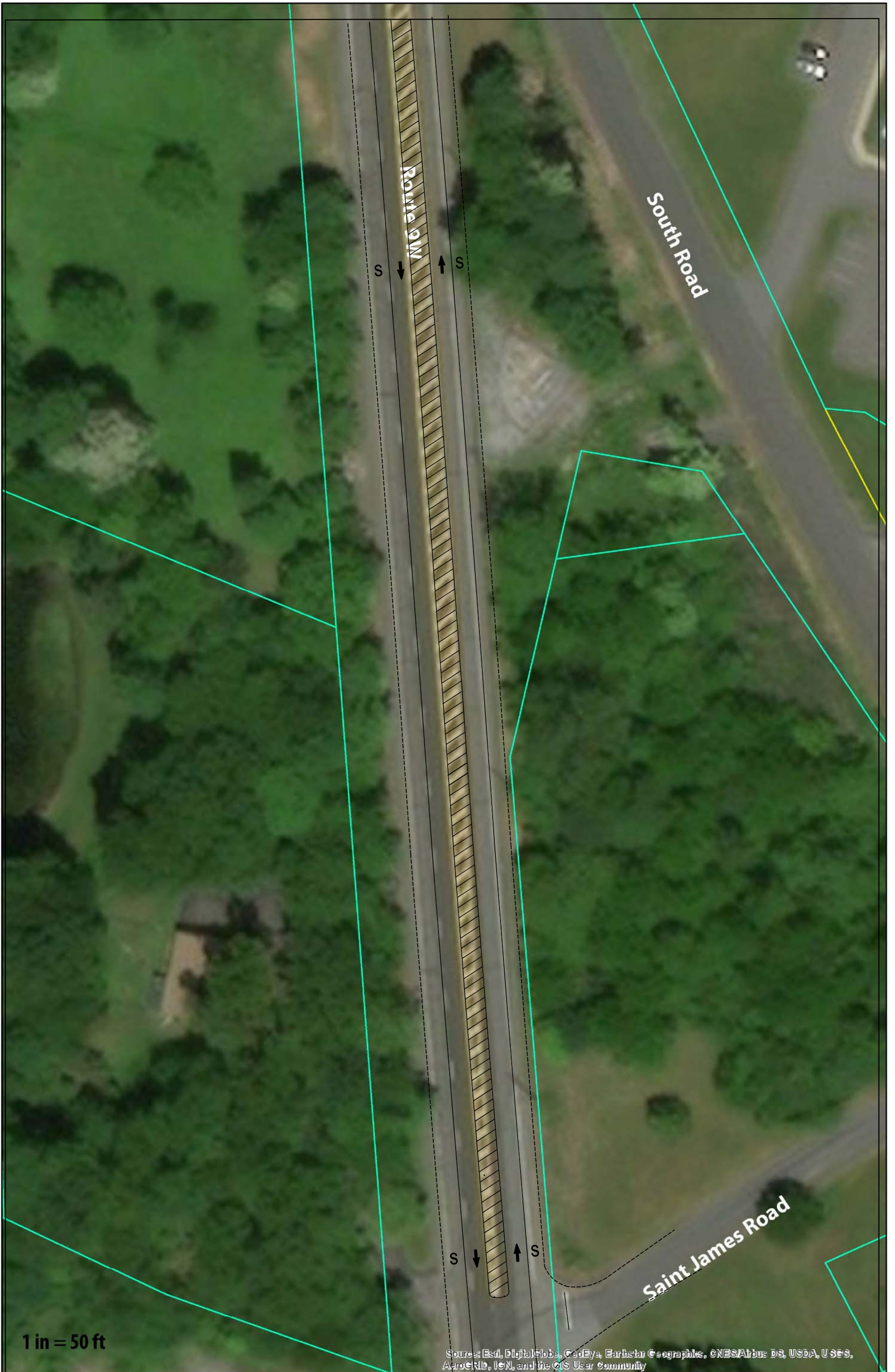
Map 11: Cluett Schantz Park (N)
Route 9W Potential Lane Reconfiguration Concept





**Map 12: Cluett Schantz Park Driveway
Route 9W Potential Lane Reconfiguration Concept**

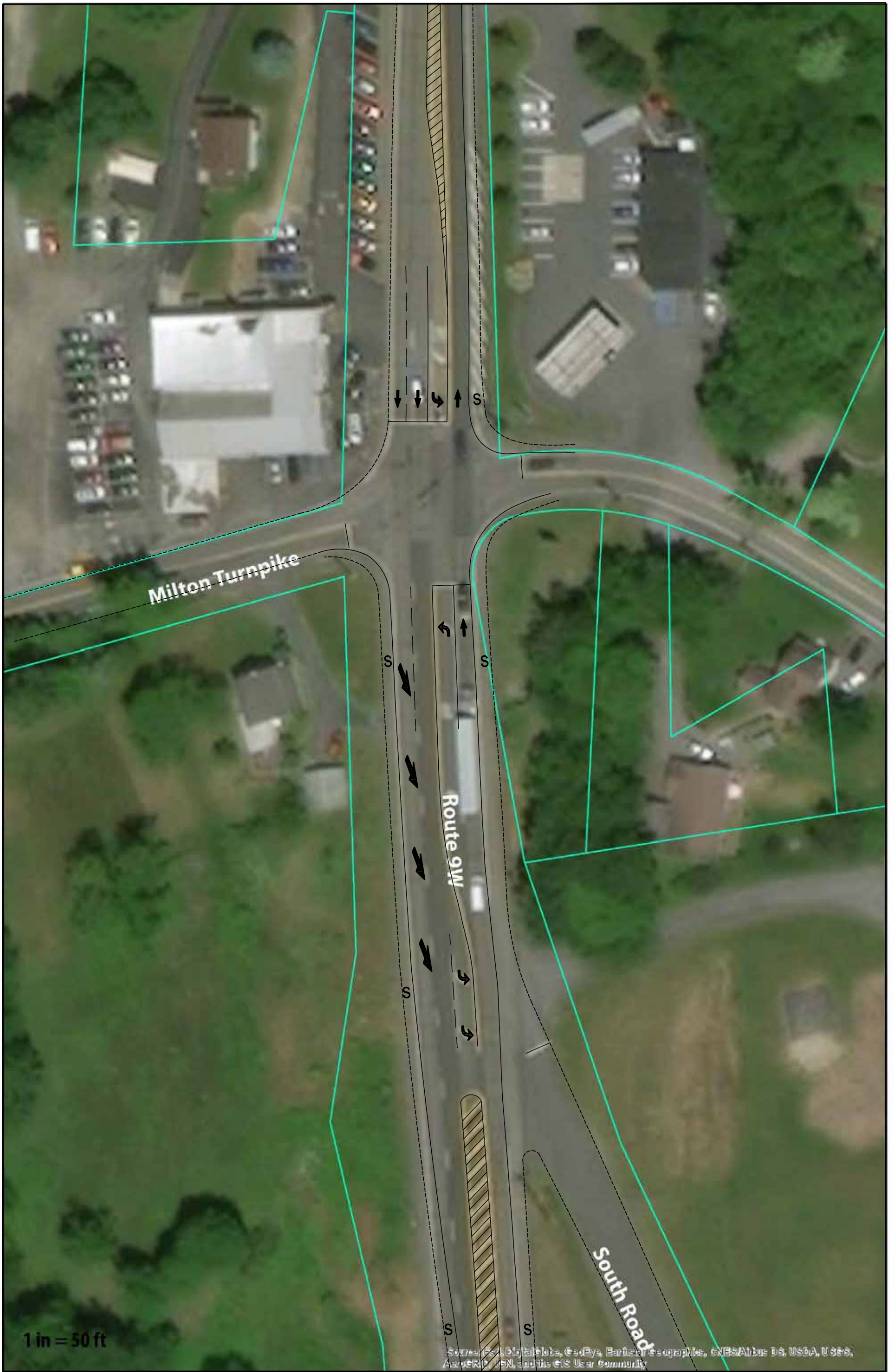




**Map 13: St. James Road
Route 9W Access Management Plan**



Source: Esri, DigitalGlobe, GeoEye, Earthstar Geographics, CNES/Airbus DS, USDA, USGS, AeroGRID, IGN, and the GIS User Community



**Map 14: Milton Turnpike
Route 9W Potential Lane Reconfiguration Concept**