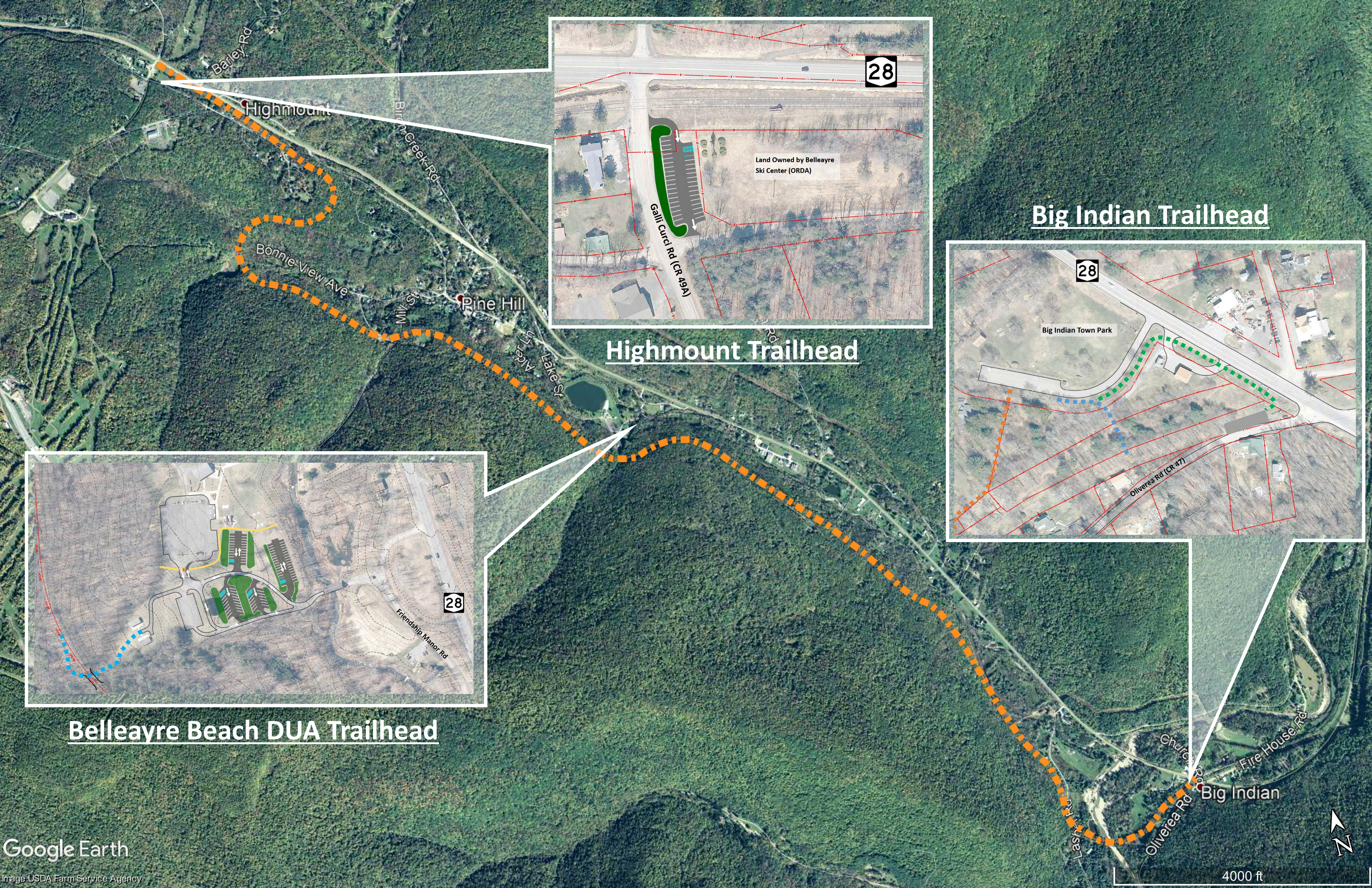




Appendix E

Large Scale Maps



Highmount

Bonnie View Ave

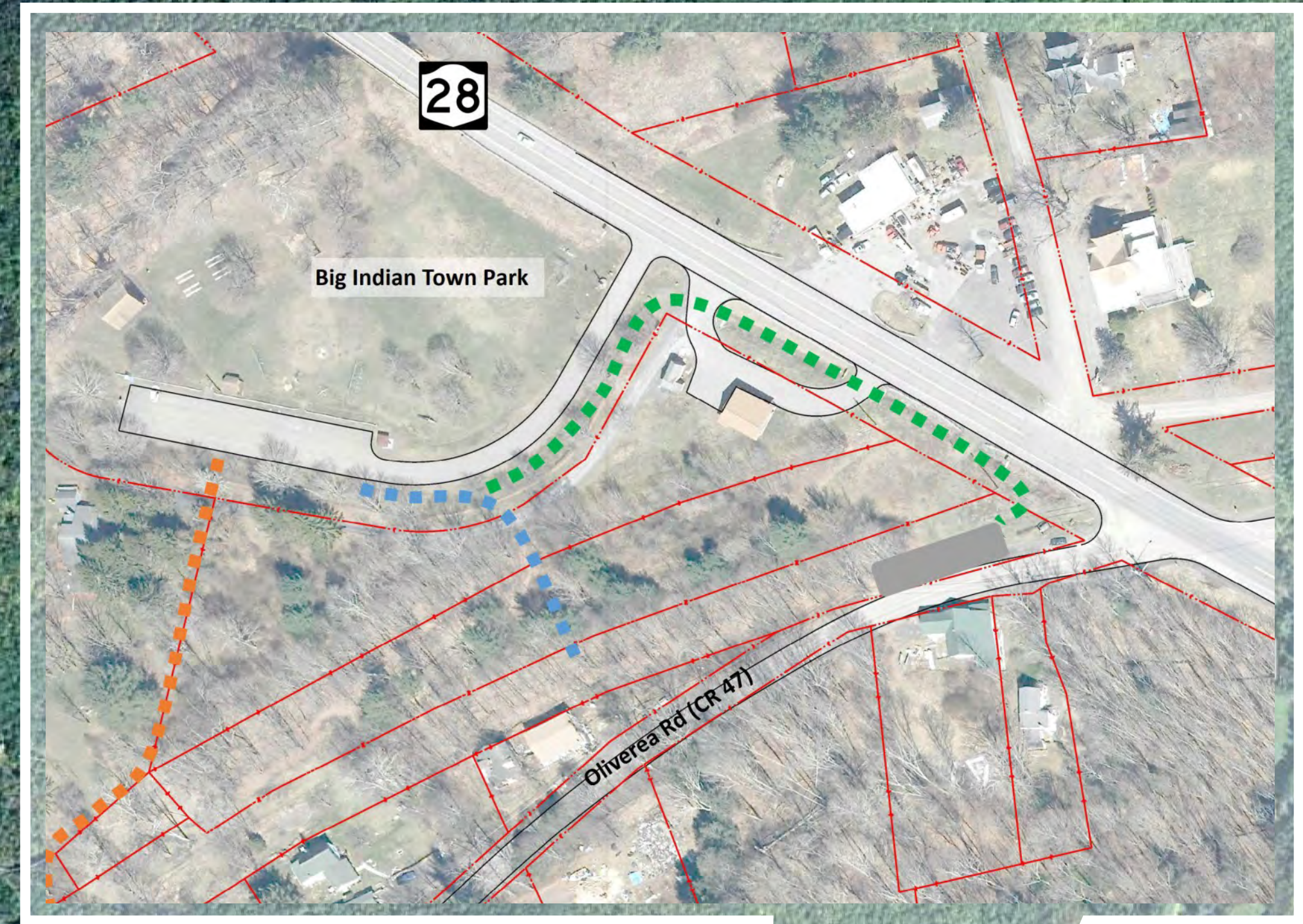
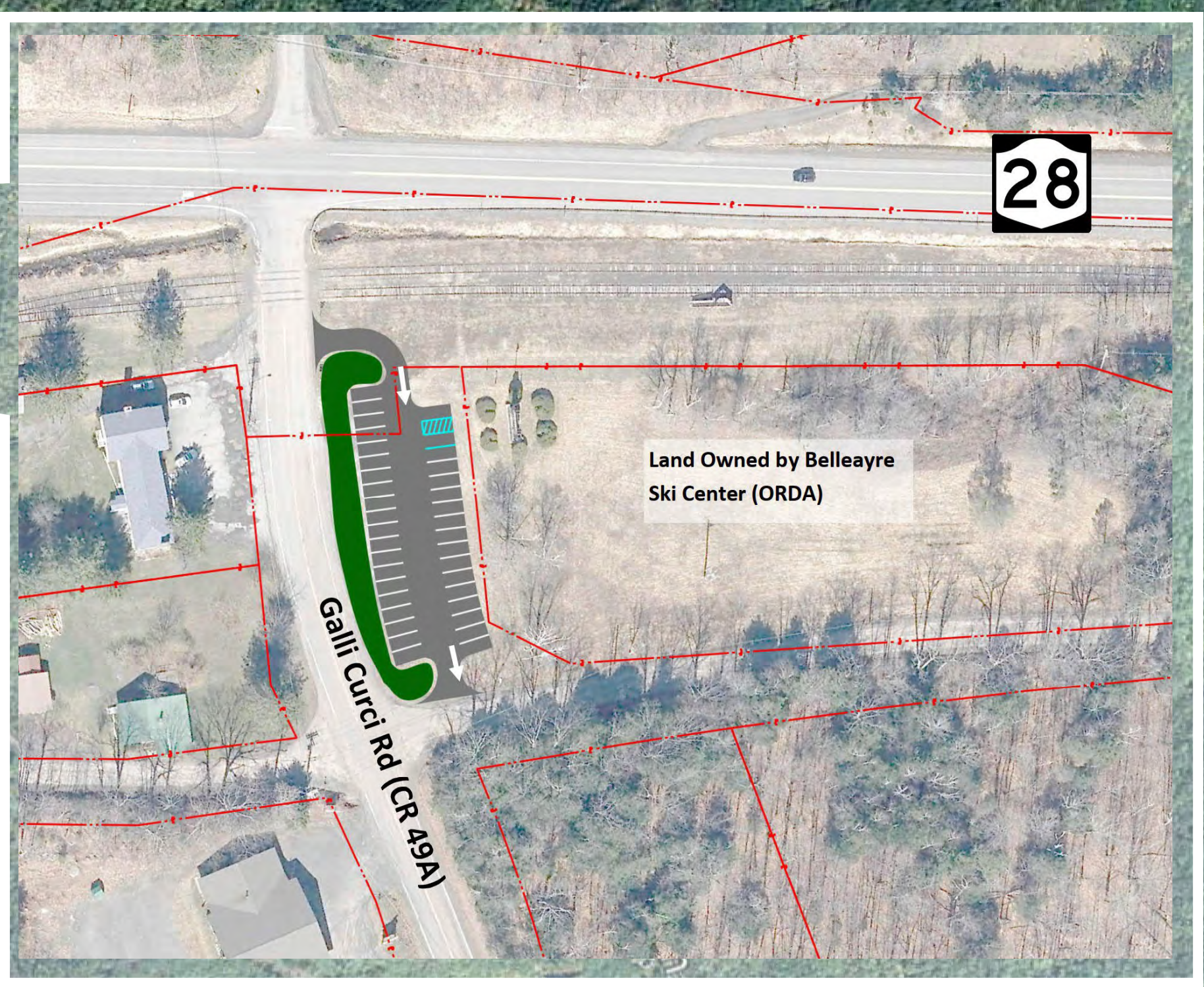
Pine Hill

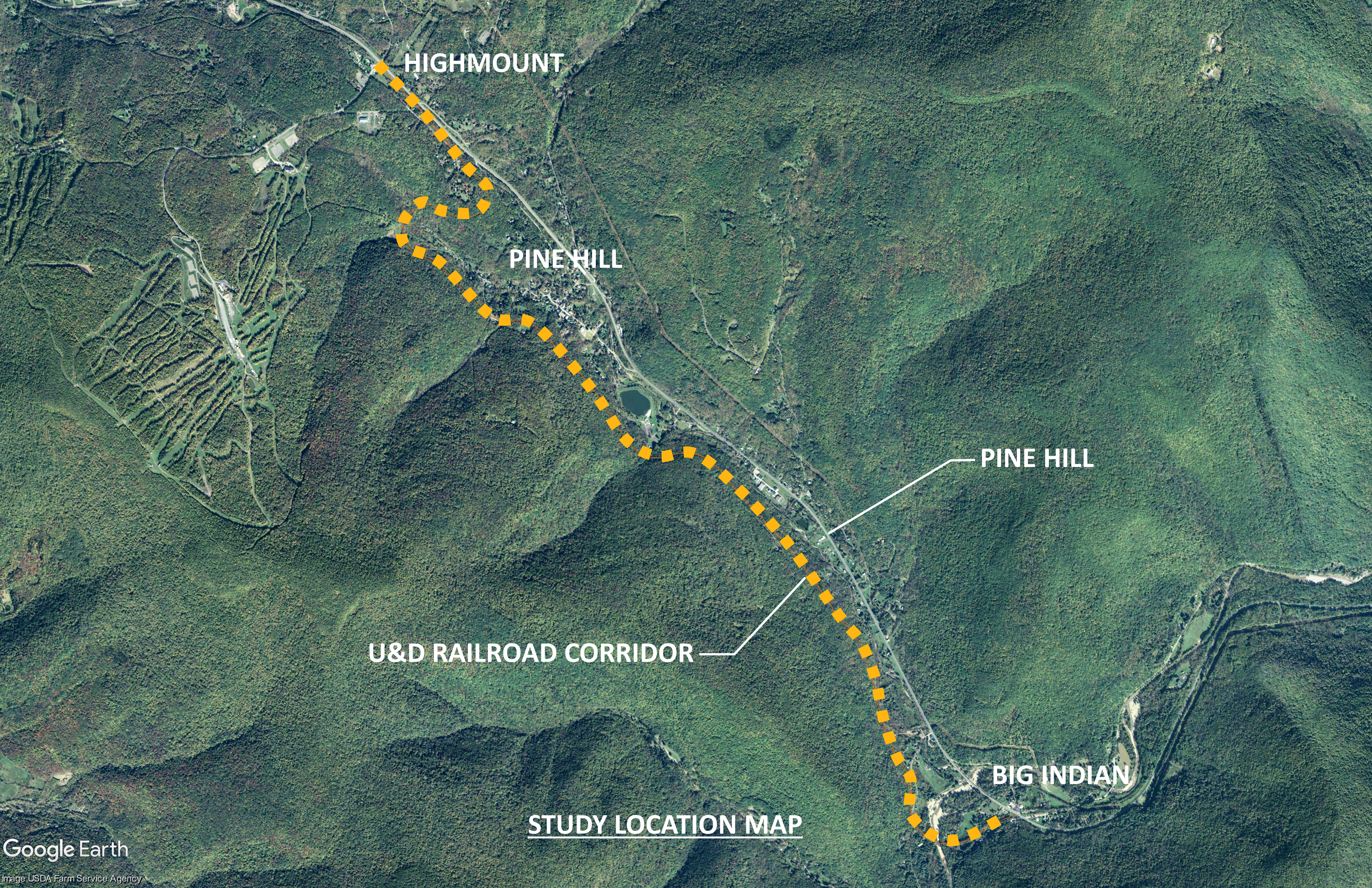
Highmount Trailhead

Belleayre Beach DUA Trailhead

Big Indian Trailhead

Big Indian





HIGHMOUNT

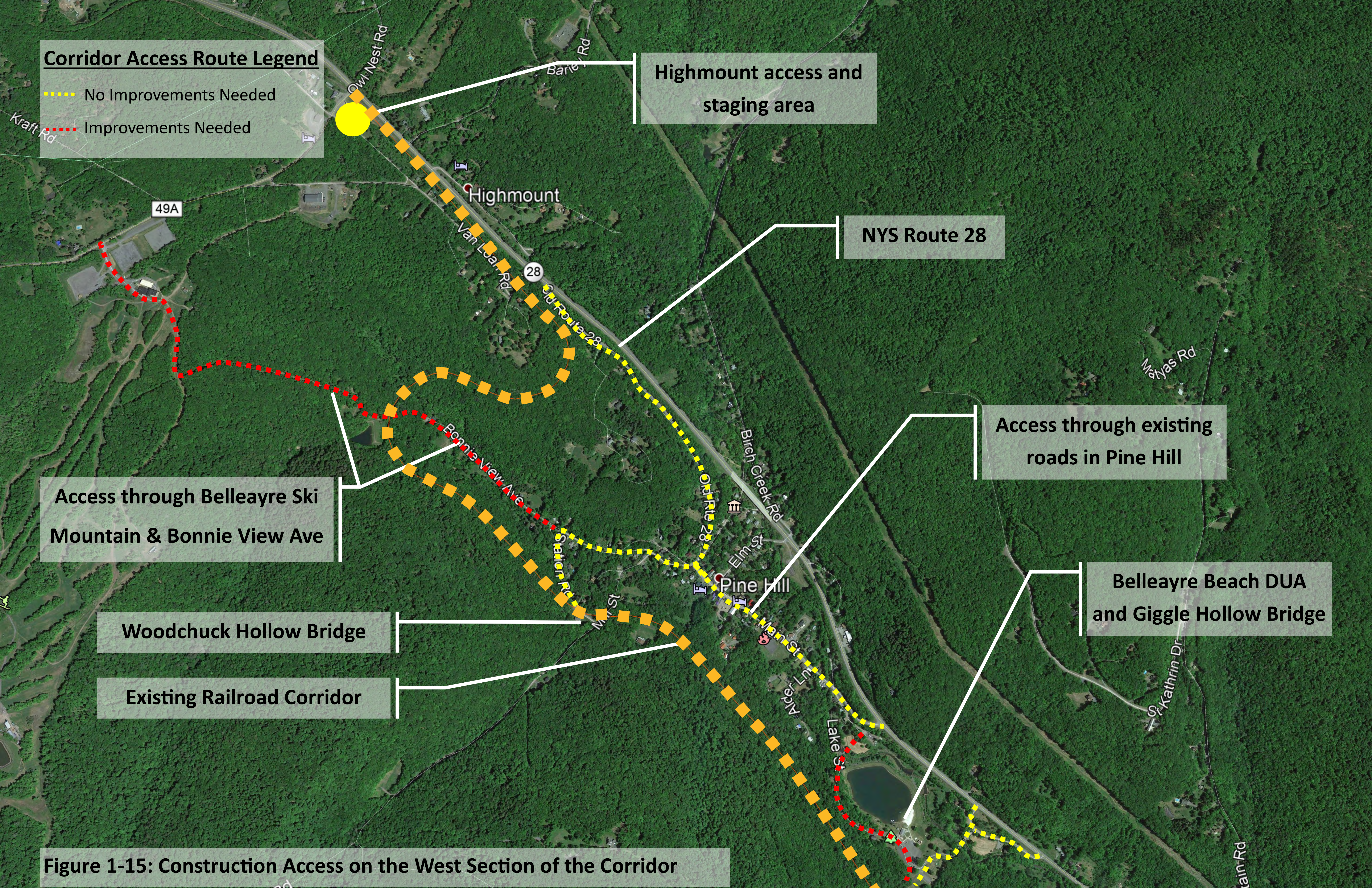
PINE HILL

PINE HILL

U&D RAILROAD CORRIDOR

BIG INDIAN

STUDY LOCATION MAP



Corridor Access Route Legend

- No Improvements Needed
- Improvements Needed

Highmount access and staging area

NYS Route 28

Access through existing roads in Pine Hill

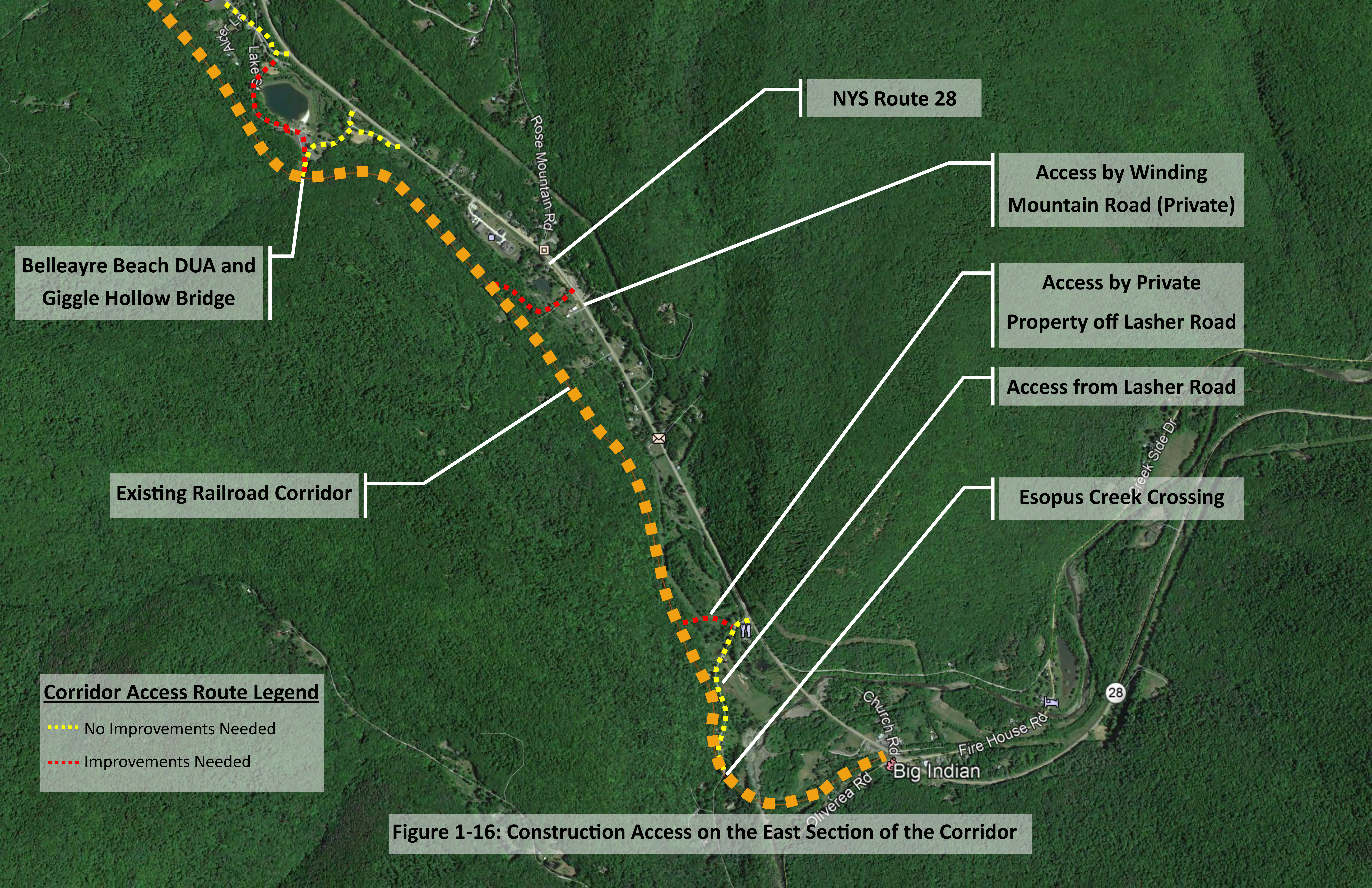
Belleayre Beach DUA and Giggie Hollow Bridge

Access through Belleayre Ski Mountain & Bonnie View Ave

Woodchuck Hollow Bridge

Existing Railroad Corridor

Figure 1-15: Construction Access on the West Section of the Corridor



Belleayre Beach DUA and
Giggle Hollow Bridge

Existing Railroad Corridor

Corridor Access Route Legend

- No Improvements Needed
- Improvements Needed

NYS Route 28

Access by Winding
Mountain Road (Private)

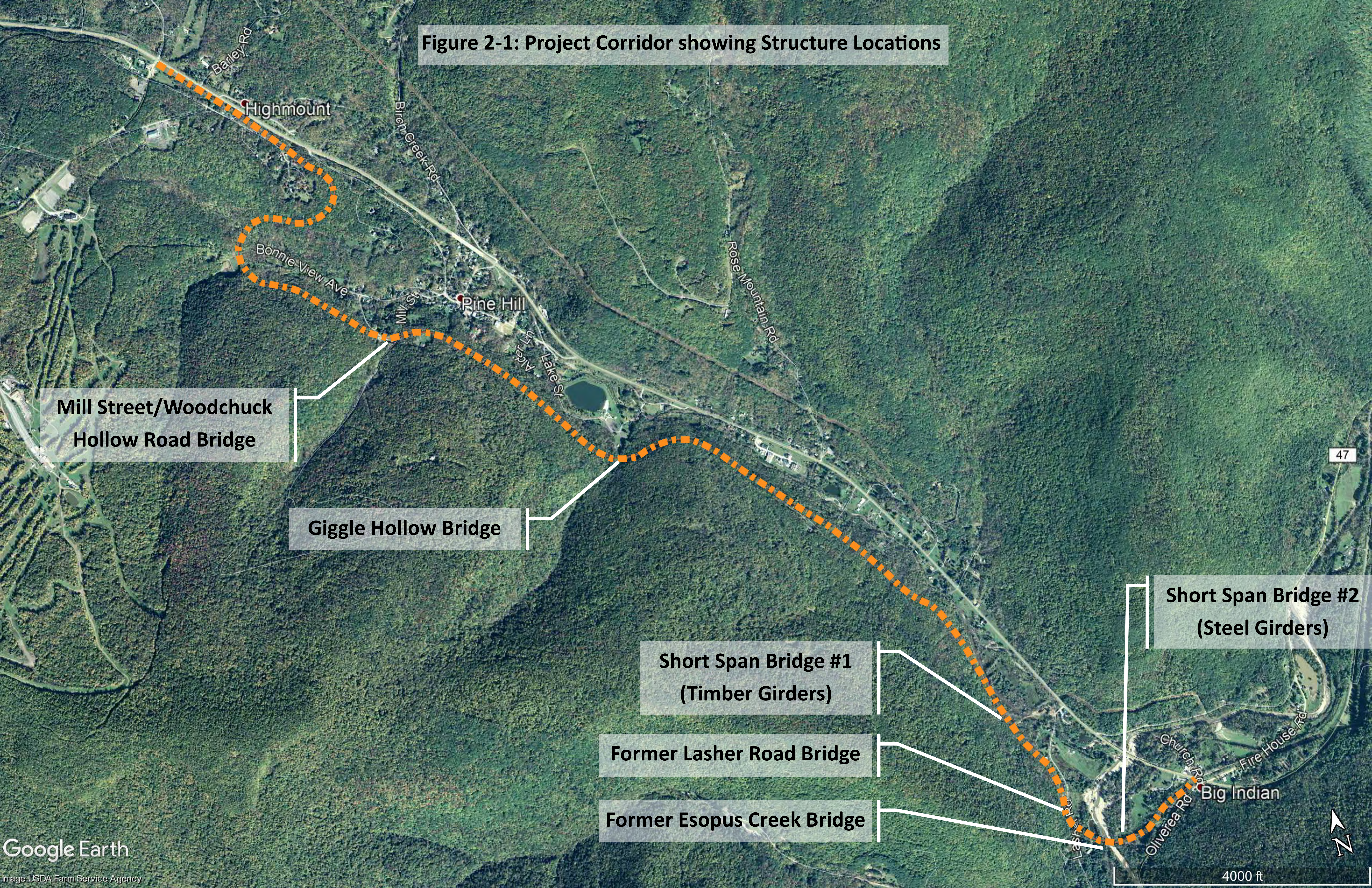
Access by Private
Property off Lasher Road

Access from Lasher Road

Esopus Creek Crossing

Figure 1-16: Construction Access on the East Section of the Corridor

Figure 2-1: Project Corridor showing Structure Locations



Mill Street/Woodchuck
Hollow Road Bridge

Giggle Hollow Bridge

Short Span Bridge #1
(Timber Girders)

Former Lasher Road Bridge

Former Esopus Creek Bridge

Short Span Bridge #2
(Steel Girders)

Approximate Property Lines obtained from Ulster County Parcel Viewer

Tracks to remain in place for use by the D&U RR

Existing Platform to remain for use by the D&U RR

Existing Culvert and delineated Wetland

"Compromise Joint" - End of D&U RR use agreement in Ulster County

Belleayre Ski Center Sign



Land Owned by Belleayre Ski Center (ORDA)

Trail should be constructed 5-10 ft. from near rail as shown for use by D&U RR

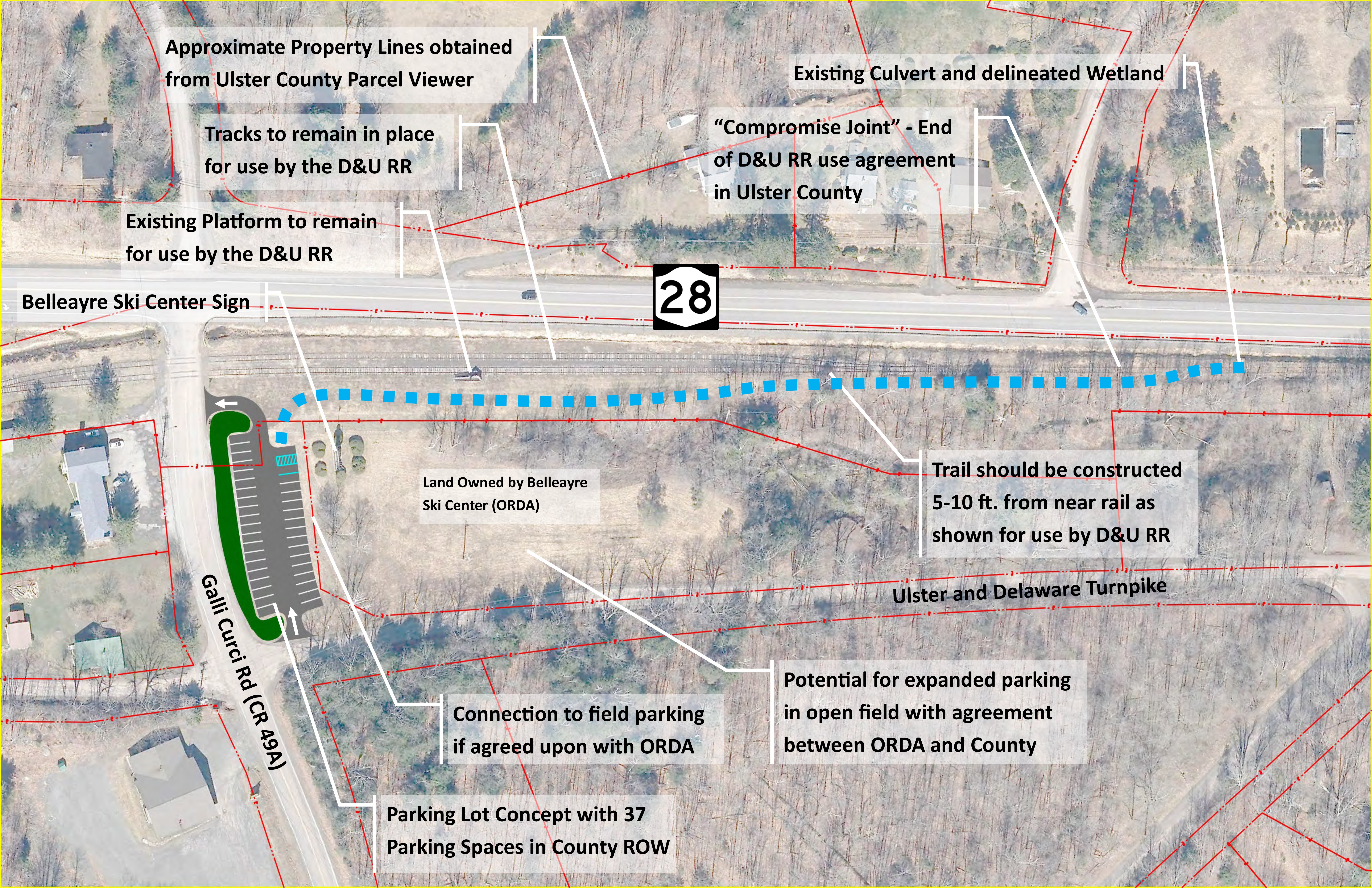
Ulster and Delaware Turnpike

Potential for expanded parking in open field with agreement between ORDA and County

Connection to field parking if agreed upon with ORDA

Parking Lot Concept with 37 Parking Spaces in County ROW

Galli Curci Rd (CR 49A)



Existing U&D
Railroad Corridor

Existing beach parking lot
to remain. 107 spaces

Relocate entry fee collec-
tion booth and gate. Widen
existing entrance road

Existing parking lot 26 spaces
converted to trail parking

Trail to provide access
from parking facilities to
Rail Trail

Giggle Hollow
Bridge

Concept A— Two New Park-
ing Lots at existing fountain
with 33 Parking Spaces

Install fence or natural barrier (plantings)
to separate Beach facility from trail

Concept B—New Parking Lot in
Open Field with 27 Parking Spaces

Concept C—New Parking Lot in
Open Field with 33 Parking Spaces

Birch Creek

Gated One Lane Covered
Bridge

Existing Entry Fee
Collection Booth

Utilize existing roadway
network within facility

Install and update wayfinding
signs to differentiate between
ORDA and trail facilities



Friendship Manor Rd



Approximate Property Lines obtained from Ulster County Parcel Viewer

US Post Office

Existing parking lot with 25 spaces

Big Indian Town Park

Concept D - Parking for 8-12 cars on improved gravel pull off area

Concept C

Land Owned by Jeff P Laskow. SBL: 12.7-1-19.200

Land Owned by Craig E Bedell. SBL: 12.7-1-20

Concept A

Concept B

Land Owned by Jeff P Laskow. SBL: 12.7-1-19.100

Existing U&D Railroad Corridor

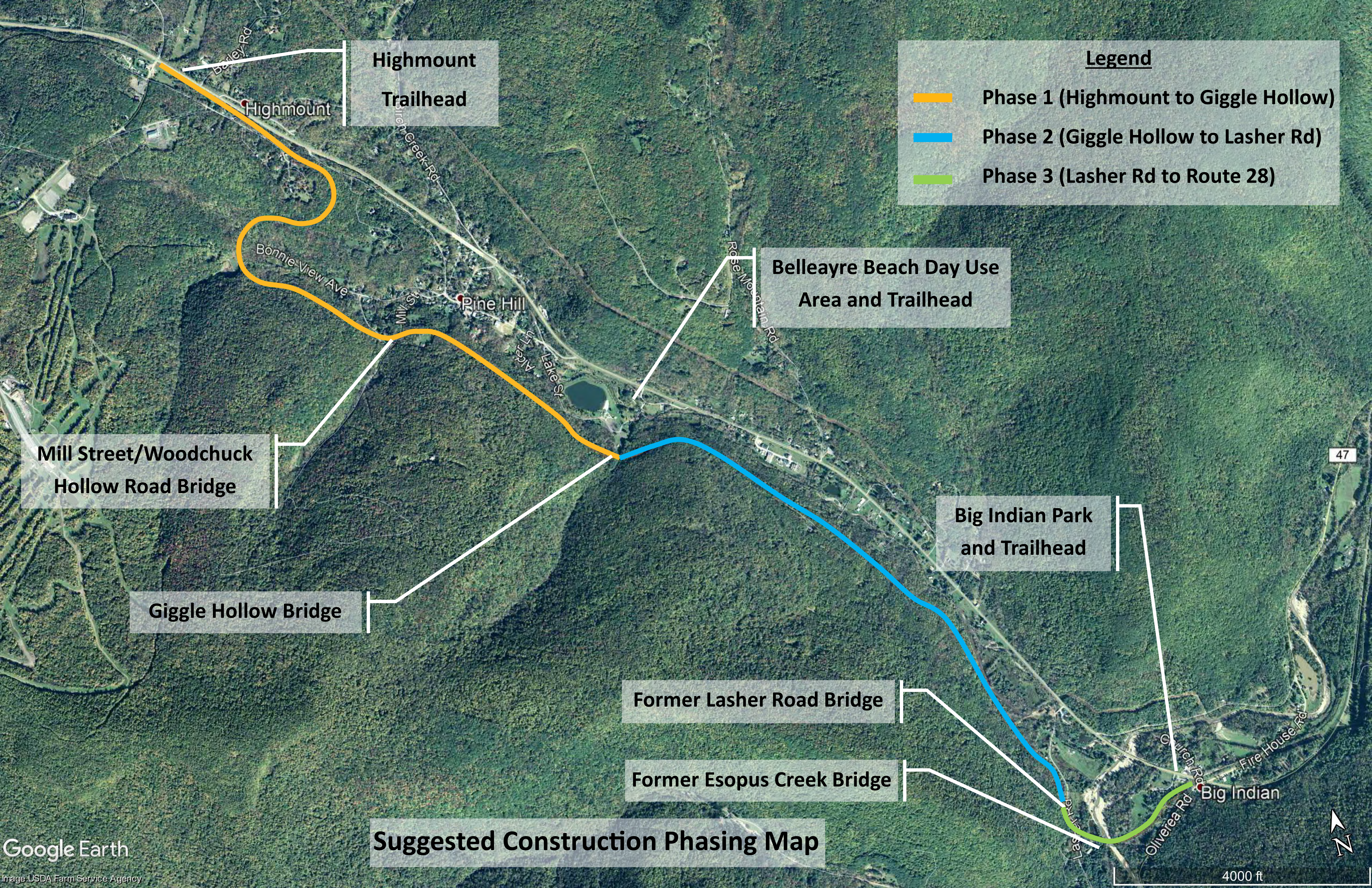
Oliverea Rd (CR 47)

Concept A— Construct 500 ft. long path from Park to Trail on Land Owned by Jeff P Laskow

Concept B— Construct 300 ft. long path from Park to Trail on land owned by Jeff P Laskow and Craig E Bedell

Concept C— Construct 800 ft. long path adjacent to Park entrance Road and within Route 28 ROW. Coordination with NYSDOT required.

Concept D— Construct improved gravel parking area along Oliverea Road for 8-12 cars.



Legend

- Phase 1 (Highmount to Giggle Hollow)
- Phase 2 (Giggle Hollow to Lasher Rd)
- Phase 3 (Lasher Rd to Route 28)

Highmount
Trailhead

Belleayre Beach Day Use
Area and Trailhead

Big Indian Park
and Trailhead

Mill Street/Woodchuck
Hollow Road Bridge

Giggle Hollow Bridge

Former Lasher Road Bridge

Former Esopus Creek Bridge

Suggested Construction Phasing Map