

Ulster County, New York Open Space Plan

2c. Aquifers

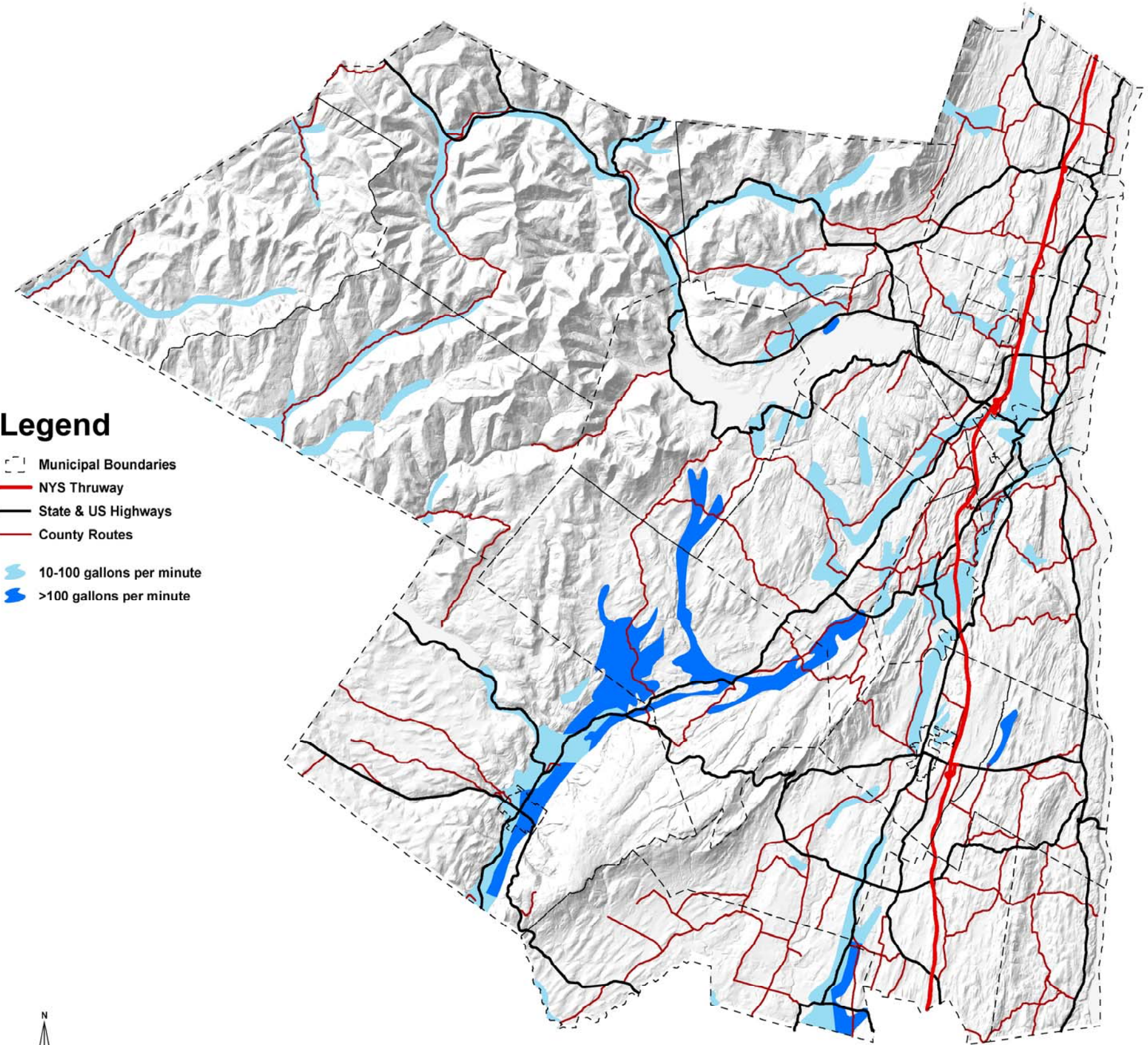
This map displays New York State aquifers found in Ulster County, New York.

Based on the data shown, there are approximately 64,595 acres of unconsolidated aquifer in Ulster County. It is very important to note that this figure does not include aquifer smaller than 1 square mile in size.

Aquifer Source Data Explained

The data used to display the aquifers on this map came from the sources listed in the table below.

Aquifer Source Data	Where Acquired	Description of Data (excerpted from metadata)
New York State Aquifers	Published by the NYS Department of Health, Bureau of Public Water Supply Protection in 2001. online linkage: http://www.nysgis.state.ny.us/ (8/05)	<p>The data set consists of aquifer polygons or regions depicting unconsolidated aquifers in New York State, excluding Long Island. Aquifers are separated by and include attributes for potential yield ranges and confinement indicator.</p> <p>Aquifer boundaries and yield ranges are derived from USGS [water resource investigation] paper maps (5 WRIs: 87-4122, 87-4274, 87-4275, 87-4276, and 88-4076) produced for the low level radioactivity [LLRW] siting board (4/89).</p> <p>Original vector linework representing composited aquifer limits were available from the LLRW which was digitized over USGS Topographic Maps at a scale of 1:250,000.</p> <p>Aquifers presented in this data set do not include all aquifers in New York State. Omissions include aquifers on Long Island, and aquifers below the original LLRW minimum mapping unit criterion of less than 1 square mile that was applied to the initial digital capture of features shown on the USGS maps.</p>



Legend

- Municipal Boundaries
- NYS Thruway
- State & US Highways
- County Routes
- 10-100 gallons per minute
- >100 gallons per minute



Ulster County Planning Board
244 Fair Street
PO Box 1800
Kingston, NY 12401
845-340-3340

Datum and Projection: NAD 27, UTM 18
Map Date: June 2009



0 5 10 Miles

This map is for informational purposes and was not prepared for legal, engineering, or surveying purposes. Users of this information should consult the primary data and information sources to ascertain the usability of the information.